

ARG40054
anti-KLF17 antibodyPackage: 100 µl
Store at: -20°C

Summary

Product Description	Rabbit Polyclonal antibody recognizes KLF17
Tested Reactivity	Hu, Ms
Tested Application	WB
Host	Rabbit
Clonality	Polyclonal
Isotype	IgG
Target Name	KLF17
Species	Human
Immunogen	Recombinant fusion protein corresponding to aa. 210-389 of Human KLF17 (NP_775755.3).
Conjugation	Un-conjugated
Alternate Names	Zinc finger protein 393; Krueppel-like factor 17; ZNF393; Zfp393

Application Instructions

Application table	Application	Dilution
	WB	1:500 - 1:2000
Application Note	* The dilutions indicate recommended starting dilutions and the optimal dilutions or concentrations should be determined by the scientist.	
Positive Control	Mouse brain and HepG2	
Observed Size	43 kDa	

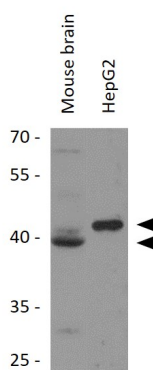
Properties

Form	Liquid
Purification	Affinity purified.
Buffer	PBS (pH 7.3), 0.02% Sodium azide and 50% Glycerol.
Preservative	0.02% Sodium azide
Stabilizer	50% Glycerol
Storage instruction	For continuous use, store undiluted antibody at 2-8°C for up to a week. For long-term storage, aliquot and store at -20°C. Storage in frost free freezers is not recommended. Avoid repeated freeze/thaw cycles. Suggest spin the vial prior to opening. The antibody solution should be gently mixed before use.
Note	For laboratory research only, not for drug, diagnostic or other use.

Bioinformation

Gene Symbol	KLF17
Gene Full Name	Kruppel-like factor 17
Function	Transcription repressor that binds to the promoter of target genes and prevents their expression. Acts as a negative regulator of epithelial-mesenchymal transition and metastasis in breast cancer. Specifically binds the 5'-CACCC-3' sequence in the promoter of ID1, a key metastasis regulator in breast cancer, and repress its expression. May be a germ cell-specific transcription factor that plays important roles in spermatid differentiation and oocyte development (By similarity). [UniProt]
Calculated Mw	43 kDa
Cellular Localization	Nucleus. [UniProt]

Images



ARG40054 anti-KLF17 antibody WB image

Western blot: 25 µg of Mouse brain and HepG2 cell lysates stained with ARG40054 anti-KLF17 antibody at 1:3000 dilution.