

## ARG40488 anti-KBTBD2 antibody

Package: 50 µg  
Store at: -20°C

### Summary

Product Description	Rabbit Polyclonal antibody recognizes KBTBD2
Tested Reactivity	Hu, Ms, Rat
Tested Application	FACS, ICC/IF, WB
Host	Rabbit
Clonality	Polyclonal
Isotype	IgG
Target Name	KBTBD2
Species	Human
Immunogen	Synthetic peptide corresponding to a sequence of Human KBTBD2. (QYDLELDRAWLSLRQHISERVLWDLGRDFR)
Conjugation	Un-conjugated
Alternate Names	BKLHD1; Kelch repeat and BTB domain-containing protein 2; BTB and kelch domain-containing protein 1

### Application Instructions

Application table	Application	Dilution
	FACS	1:150 - 1:500
	ICC/IF	2 µg/ml
	WB	0.1 - 0.5 µg/ml

**Application Note** \* The dilutions indicate recommended starting dilutions and the optimal dilutions or concentrations should be determined by the scientist.

### Properties

Form	Liquid
Purification	Affinity purification with immunogen.
Buffer	0.2% Na <sub>2</sub> HPO <sub>4</sub> , 0.9% NaCl, 0.05% Sodium azide and 4% Trehalose.
Preservative	0.05% Sodium azide
Stabilizer	4% Trehalose
Concentration	0.5 mg/ml
Storage instruction	For continuous use, store undiluted antibody at 2-8°C for up to a week. For long-term storage, aliquot and store at -20°C or below. Storage in frost free freezers is not recommended. Avoid repeated freeze/thaw cycles. Suggest spin the vial prior to opening. The antibody solution should be gently mixed before use.

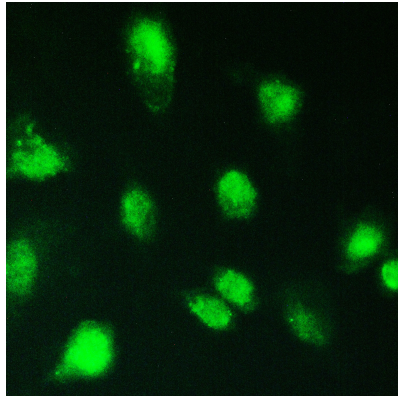
Note

For laboratory research only, not for drug, diagnostic or other use.

## Bioinformation

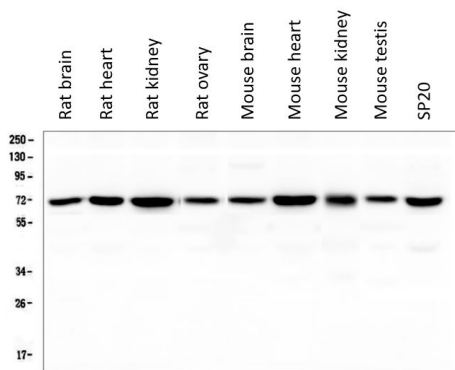
Gene Symbol	KBTBD2
Gene Full Name	kelch repeat and BTB (POZ) domain containing 2
Calculated Mw	71 kDa

## Images



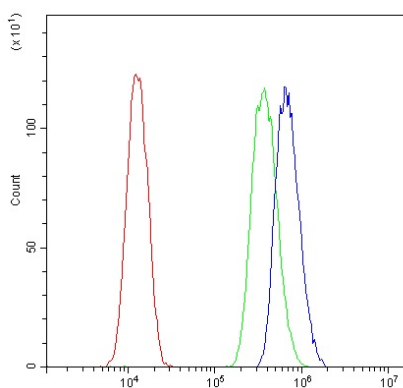
ARG40488 anti-KBTBD2 antibody ICC/IF image

Immunofluorescence: A549 cells stained with ARG40488 anti-KBTBD2 antibody.



ARG40488 anti-KBTBD2 antibody WB image

Western blot: 50 µg of samples under reducing conditions. Rat brain, Rat heart, Rat kidney, Rat ovary, Mouse brain, Mouse heart, Mouse kidney, Mouse testis and Mouse SP20 whole cell lysates stained with ARG40488 anti-KBTBD2 antibody at 0.5 µg/ml, overnight at 4°C.



ARG40488 anti-KBTBD2 antibody FACS image

Flow Cytometry: U87 cells were blocked with 10% normal goat serum and then stained with ARG40488 anti-KBTBD2 antibody (blue) at 1 µg/10<sup>6</sup> cells for 30 min at 20°C, followed by incubation with DyLight<sup>®</sup>488 labelled secondary antibody. Isotype control antibody (green) was rabbit IgG (1 µg/10<sup>6</sup> cells) used under the same conditions. Unlabelled sample (red) was also used as a control.

### ARG40488 anti-KBTBD2 antibody WB image

Western blot: 50 µg of samples under reducing conditions. HeLa, Human placenta, K562, U2OS, THP-1 and A549 whole cell lysates stained with ARG40488 anti-KBTBD2 antibody at 0.5 µg/ml, overnight at 4°C.

