

**ARG40811**  
anti-PFDN2 antibodyPackage: 100 µl  
Store at: -20°C

### Summary

Product Description	Rabbit Polyclonal antibody recognizes PFDN2
Tested Reactivity	Hu, Ms
Tested Application	WB
Host	Rabbit
Clonality	Polyclonal
Isotype	IgG
Target Name	PFDN2
Species	Human
Immunogen	Recombinant fusion protein corresponding to aa. 1-154 of Human PFDN2 (NP_036526.2).
Conjugation	Un-conjugated
Alternate Names	PFD2; Prefoldin subunit 2

### Application Instructions

Application table	Application	Dilution
	WB	1:500 - 1:2000
Application Note	* The dilutions indicate recommended starting dilutions and the optimal dilutions or concentrations should be determined by the scientist.	
Positive Control	22Rv1	
Observed Size	16 kDa	

### Properties

Form	Liquid
Purification	Affinity purified.
Buffer	PBS (pH 7.3), 0.02% Sodium azide and 50% Glycerol.
Preservative	0.02% Sodium azide
Stabilizer	50% Glycerol
Storage instruction	For continuous use, store undiluted antibody at 2-8°C for up to a week. For long-term storage, aliquot and store at -20°C. Storage in frost free freezers is not recommended. Avoid repeated freeze/thaw cycles. Suggest spin the vial prior to opening. The antibody solution should be gently mixed before use.
Note	For laboratory research only, not for drug, diagnostic or other use.

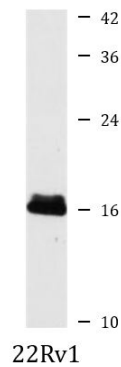
## Bioinformation

---

Gene Symbol	PFDN2
Gene Full Name	prefoldin subunit 2
Background	This gene encodes a member of the prefoldin beta subunit family. The encoded protein is one of six subunits of prefoldin, a molecular chaperone complex that binds and stabilizes newly synthesized polypeptides, thereby allowing them to fold correctly. The complex, consisting of two alpha and four beta subunits, forms a double beta barrel assembly with six protruding coiled-coils. [provided by RefSeq, Jul 2008]
Function	Binds specifically to cytosolic chaperonin (c-CPN) and transfers target proteins to it. Binds to nascent polypeptide chain and promotes folding in an environment in which there are many competing pathways for nonnative proteins. [UniProt]
Calculated Mw	17 kDa
Cellular Localization	Nucleus. Cytoplasm. Mitochondrion. [UniProt]

## Images

---



ARG40811 anti-PFDN2 antibody WB image

Western blot: 25 µg of 22Rv1 cell lysate stained with ARG40811 anti-PFDN2 antibody at 1:3000 dilution.