

**ARG41661**  
anti-CDC42EP1 antibodyPackage: 100 µl  
Store at: -20°C

### Summary

Product Description	Rabbit Polyclonal antibody recognizes CDC42EP1
Tested Reactivity	Hu
Tested Application	WB
Host	Rabbit
Clonality	Polyclonal
Isotype	IgG
Target Name	CDC42EP1
Species	Human
Immunogen	Synthetic peptide of Human CDC42EP1.
Conjugation	Un-conjugated
Alternate Names	BORG5; Serum protein MSE55; Binder of Rho GTPases 5; CEP1; MSE55; Cdc42 effector protein 1

### Application Instructions

Application table	Application	Dilution
	WB	1:500 - 1:2000
Application Note	* The dilutions indicate recommended starting dilutions and the optimal dilutions or concentrations should be determined by the scientist.	
Positive Control	HUVEC	
Observed Size	~ 62 kDa	

### Properties

Form	Liquid
Purification	Affinity purified.
Buffer	PBS (pH 7.4), 150 mM NaCl, 0.02% Sodium azide and 50% Glycerol.
Preservative	0.02% Sodium azide
Stabilizer	50% Glycerol
Storage instruction	For continuous use, store undiluted antibody at 2-8°C for up to a week. For long-term storage, aliquot and store at -20°C. Storage in frost free freezers is not recommended. Avoid repeated freeze/thaw cycles. Suggest spin the vial prior to opening. The antibody solution should be gently mixed before use.
Note	For laboratory research only, not for drug, diagnostic or other use.

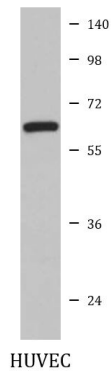
## Bioinformation

---

Gene Symbol	CDC42EP1
Gene Full Name	CDC42 effector protein (Rho GTPase binding) 1
Background	CDC42 is a member of the Rho GTPase family that regulates multiple cellular activities, including actin polymerization. The protein encoded by this gene is a CDC42 binding protein that mediates actin cytoskeleton reorganization at the plasma membrane. This protein is secreted and is primarily found in bone marrow. [provided by RefSeq, Jul 2008]
Function	Probably involved in the organization of the actin cytoskeleton. Induced membrane extensions in fibroblasts. [UniProt]
Calculated Mw	40 kDa
Cellular Localization	Endomembrane system; Peripheral membrane protein. Cytoplasm, cytoskeleton. [UniProt]

## Images

---



ARG41661 anti-CDC42EP1 antibody WB image

Western blot: HUVEC cell lysate stained with ARG41661 anti-CDC42EP1 antibody.