

ARG41679
anti-Caspase 6 (fulllength + P18) antibodyPackage: 50 µg
Store at: -20°C

Summary

Product Description	Rabbit Polyclonal antibody recognizes Caspase 6 (fulllength + P18)
Tested Reactivity	Ms, Rat
Tested Application	IHC-Fr, IHC-P, WB
Host	Rabbit
Clonality	Polyclonal
Isotype	IgG
Target Name	Caspase 6 (fulllength + P18)
Species	Rat
Immunogen	Synthetic peptide corresponding to aa. 7-27 of Rat Caspase 6 (P18). (FYRSREVLDPAEQYKMDHKRR)
Conjugation	Un-conjugated
Alternate Names	MCH2; EC 3.4.22.59; CASP-6; Caspase-6; Apoptotic protease Mch-2

Application Instructions

Application table	Application	Dilution
	IHC-Fr	1:200 - 1:1000
	IHC-P	1:200 - 1:1000
	WB	1:500 - 1:2000
Application Note	* The dilutions indicate recommended starting dilutions and the optimal dilutions or concentrations should be determined by the scientist.	
Observed Size	~ 33 kDa	

Properties

Form	Liquid
Purification	Affinity purification with immunogen.
Buffer	0.2% Na ₂ HPO ₄ , 0.9% NaCl, 0.05% Thimerosal, 0.05% Sodium azide and 5% BSA.
Preservative	0.05% Thimerosal and 0.05% Sodium azide
Stabilizer	5% BSA
Concentration	0.5 mg/ml
Storage instruction	For continuous use, store undiluted antibody at 2-8°C for up to a week. For long-term storage, aliquot and store at -20°C or below. Storage in frost free freezers is not recommended. Avoid repeated freeze/thaw cycles. Suggest spin the vial prior to opening. The antibody solution should be gently mixed before use.

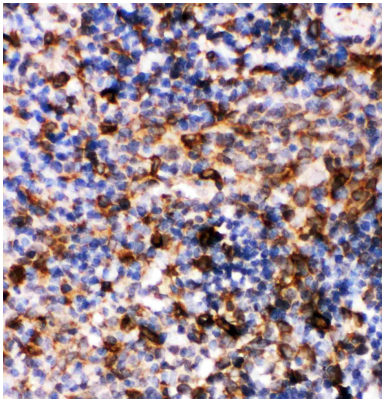
Note

For laboratory research only, not for drug, diagnostic or other use.

Bioinformation

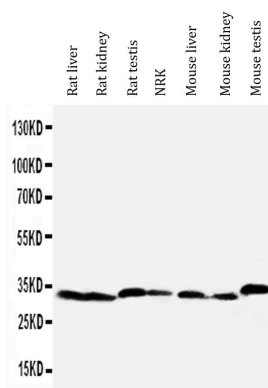
Gene Symbol	CASP6
Gene Full Name	caspase 6, apoptosis-related cysteine peptidase
Background	This gene encodes a protein which is a member of the cysteine-aspartic acid protease (caspase) family. Sequential activation of caspases plays a central role in the execution-phase of cell apoptosis. Caspases exist as inactive proenzymes which undergo proteolytic processing at conserved aspartic residues to produce two subunits, large and small, that dimerize to form the active enzyme. This protein is processed by caspases 7, 8 and 10, and is thought to function as a downstream enzyme in the caspase activation cascade. Alternative splicing of this gene results in two transcript variants that encode different isoforms. [provided by RefSeq, Jul 2008]
Function	Involved in the activation cascade of caspases responsible for apoptosis execution. Cleaves poly(ADP-ribose) polymerase in vitro, as well as lamins. Overexpression promotes programmed cell death. [UniProt]
Calculated Mw	33 kDa
PTM	Cleavages by caspase-3, caspase-8 or -10 generate the two active subunits. [UniProt]
Cellular Localization	Cytoplasm. [UniProt]

Images



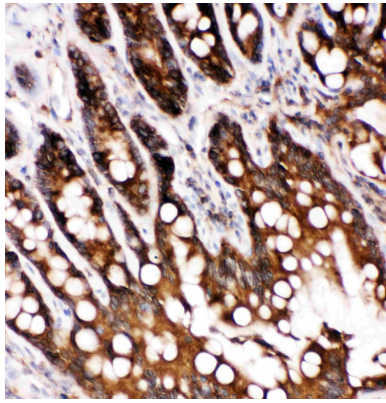
ARG41679 anti-Caspase 6 (fulllength + P18) antibody IHC-P image

Immunohistochemistry: Paraffin-embedded Rat spleen tissue stained with ARG41679 anti-Caspase 6 (fulllength + P18) antibody.



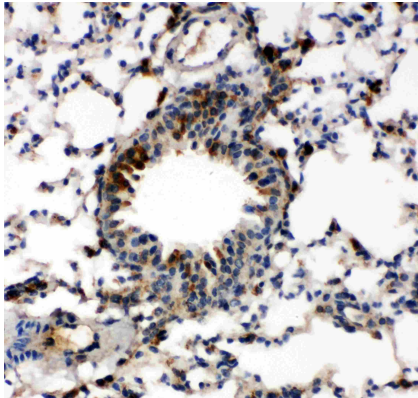
ARG41679 anti-Caspase 6 (fulllength + P18) antibody WB image

Western blot: Rat liver, Rat kidney, Rat testis, NRK cell, Mouse liver, Mouse kidney and Mouse testis lysates stained with ARG41679 anti-Caspase 6 (fulllength + P18) antibody.



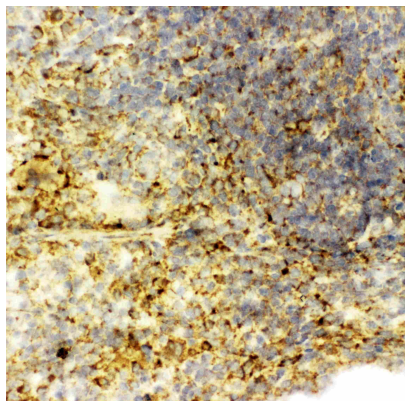
ARG41679 anti-Caspase 6 (fulllength + P18) antibody IHC-P image

Immunohistochemistry: Paraffin-embedded Rat intestine tissue stained with ARG41679 anti-Caspase 6 (fulllength + P18) antibody.



ARG41679 anti-Caspase 6 (fulllength + P18) antibody IHC-P image

Immunohistochemistry: Paraffin-embedded Mouse lung tissue stained with ARG41679 anti-Caspase 6 (fulllength + P18) antibody.



ARG41679 anti-Caspase 6 (fulllength + P18) antibody IHC-Fr image

Immunohistochemistry: Frozen section of Rat spleen tissue stained with ARG41679 anti-Caspase 6 (fulllength + P18) antibody.
