

ARG42086 anti-SLC6A8 antibody

Package: 100 µl
Store at: -20°C

Summary

| | |
|---------------------|--|
| Product Description | Rabbit Polyclonal antibody recognizes SLC6A8 |
| Tested Reactivity | Hu, Ms |
| Tested Application | WB |
| Host | Rabbit |
| Clonality | Polyclonal |
| Isotype | IgG |
| Target Name | SLC6A8 |
| Species | Human |
| Immunogen | Recombinant fusion protein corresponding to aa. 539-635 of Human SLC6A8 (NP_005620.1). |
| Conjugation | Un-conjugated |
| Alternate Names | Solute carrier family 6 member 8; CCDS1; CT1; CRT; Creatine transporter 1; CRTR; CTR5; Sodium- and chloride-dependent creatine transporter 1 |

Application Instructions

| | | |
|-------------------|--|----------------|
| Application table | Application | Dilution |
| | WB | 1:500 - 1:2000 |
| Application Note | * The dilutions indicate recommended starting dilutions and the optimal dilutions or concentrations should be determined by the scientist. | |
| Positive Control | Mouse brain | |
| Observed Size | ~ 68 kDa | |
| Assay Time | P48029 | |

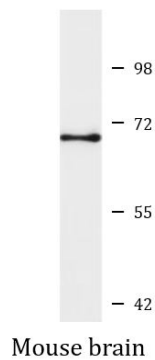
Properties

| | |
|---------------------|---|
| Form | Liquid |
| Purification | Affinity purified. |
| Buffer | PBS (pH 7.3), 0.02% Sodium azide and 50% Glycerol. |
| Preservative | 0.02% Sodium azide |
| Stabilizer | 50% Glycerol |
| Storage instruction | For continuous use, store undiluted antibody at 2-8°C for up to a week. For long-term storage, aliquot and store at -20°C. Storage in frost free freezers is not recommended. Avoid repeated freeze/thaw cycles. Suggest spin the vial prior to opening. The antibody solution should be gently mixed before use. |
| Note | For laboratory research only, not for drug, diagnostic or other use. |

Bioinformation

| | |
|-----------------------|---|
| Gene Symbol | SLC6A8 |
| Gene Full Name | solute carrier family 6 (neurotransmitter transporter), member 8 |
| Background | The protein encoded by this gene is a plasma membrane protein whose function is to transport creatine into and out of cells. Defects in this gene can result in X-linked creatine deficiency syndrome. Multiple transcript variants encoding different isoforms have been found for this gene. [provided by RefSeq, Dec 2008] |
| Function | Required for the uptake of creatine in muscles and brain. [UniProt] |
| Calculated Mw | 71 kDa |
| Cellular Localization | Membrane; Multi-pass membrane protein. [UniProt] |

Images



ARG42086 anti-SLC6A8 antibody WB image

Western blot: 25 µg of Mouse brain lysate stained with ARG42086 anti-SLC6A8 antibody at 1:1000 dilution.