

## ARG42202 anti-MLC1 antibody

Package: 100 µl  
Store at: -20°C

### Summary

Product Description	Rabbit Polyclonal antibody recognizes MLC1
Tested Reactivity	Hu, Ms
Tested Application	WB
Host	Rabbit
Clonality	Polyclonal
Isotype	IgG
Target Name	MLC1
Species	Human
Immunogen	Synthetic peptide within aa. 300 to the C-terminus of Human MLC1 (NP_055981.1).
Conjugation	Un-conjugated
Alternate Names	LVM; MLC; VL; Membrane protein MLC1

### Application Instructions

Application table	Application	Dilution
	WB	1:500 - 1:2000
Application Note	* The dilutions indicate recommended starting dilutions and the optimal dilutions or concentrations should be determined by the scientist.	
Positive Control	SH-SY5Y	
Observed Size	~ 47 kDa	

### Properties

Form	Liquid
Purification	Affinity purified.
Buffer	PBS (pH 7.3), 0.02% Sodium azide and 50% Glycerol.
Preservative	0.02% Sodium azide
Stabilizer	50% Glycerol
Storage instruction	For continuous use, store undiluted antibody at 2-8°C for up to a week. For long-term storage, aliquot and store at -20°C. Storage in frost free freezers is not recommended. Avoid repeated freeze/thaw cycles. Suggest spin the vial prior to opening. The antibody solution should be gently mixed before use.
Note	For laboratory research only, not for drug, diagnostic or other use.

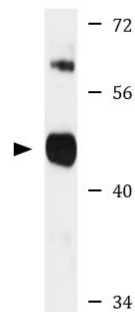
## Bioinformation

---

Gene Symbol	MLC1
Gene Full Name	megalencephalic leukoencephalopathy with subcortical cysts 1
Background	The function of this gene product is unknown; however, homology to other proteins suggests that it may be an integral membrane transporter. Mutations in this gene have been associated with megalencephalic leukoencephalopathy with subcortical cysts, an autosomal recessive neurological disorder. Alternatively spliced transcript variants encoding different isoforms have been identified. [provided by RefSeq, Jul 2008]
Function	Regulates the response of astrocytes to hypo-osmosis by promoting calcium influx. [UniProt]
Calculated Mw	41 kDa
Cellular Localization	Membrane; Multi-pass membrane protein. Cell membrane. Cytoplasm, perinuclear region. Endoplasmic reticulum. [UniProt]

## Images

---



SH-SY5Y

ARG42202 anti-MLC1 antibody WB image

Western blot: 25 µg of SH-SY5Y cell lysate stained with ARG42202 anti-MLC1 antibody at 1:3000 dilution.