

## ARG43024 anti-LRIG1 antibody

Package: 100 µl  
Store at: -20°C

### Summary

Product Description	Rabbit Polyclonal antibody recognizes LRIG1
Tested Reactivity	Hu, Ms
Tested Application	WB
Host	Rabbit
Clonality	Polyclonal
Isotype	IgG
Target Name	LRIG1
Species	Human
Immunogen	Recombinant fusion protein corresponding to aa. 35-220 of Human LRIG1 (NP_056356.2).
Conjugation	Un-conjugated
Alternate Names	LIG-1; LIG1; Leucine-rich repeats and immunoglobulin-like domains protein 1

### Application Instructions

Application table	Application	Dilution
	WB	1:1000 - 1:2000
Application Note	* The dilutions indicate recommended starting dilutions and the optimal dilutions or concentrations should be determined by the scientist.	
Positive Control	Raji	

### Properties

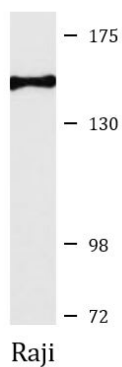
Form	Liquid
Purification	Affinity purified.
Buffer	PBS (pH 7.3), 0.02% Sodium azide and 50% Glycerol.
Preservative	0.02% Sodium azide
Stabilizer	50% Glycerol
Storage instruction	For continuous use, store undiluted antibody at 2-8°C for up to a week. For long-term storage, aliquot and store at -20°C. Storage in frost free freezers is not recommended. Avoid repeated freeze/thaw cycles. Suggest spin the vial prior to opening. The antibody solution should be gently mixed before use.
Note	For laboratory research only, not for drug, diagnostic or other use.

### Bioinformation

Gene Symbol	LRIG1
Gene Full Name	leucine-rich repeats and immunoglobulin-like domains 1
Function	Acts as a feedback negative regulator of signaling by receptor tyrosine kinases, through a mechanism that involves enhancement of receptor ubiquitination and accelerated intracellular degradation. [UniProt]
Calculated Mw	119 kDa
Cellular Localization	Cell membrane; Single-pass type I membrane protein. [UniProt]

## Images

---



ARG43024 anti-LRIG1 antibody WB image

Western blot: 25 µg of Raji cell lysate stained with ARG43024 anti-LRIG1 antibody at 1:3000 dilution.