

ARG43069 anti-SOX6 antibody

Package: 50 µg
Store at: -20°C

Summary

Product Description	Rabbit Polyclonal antibody recognizes SOX6
Tested Reactivity	Hu, Ms, Rat
Tested Application	FACS, IHC-P, WB
Host	Rabbit
Clonality	Polyclonal
Isotype	IgG
Target Name	SOX6
Species	Human
Immunogen	Synthetic peptide corresponding to a sequence of Human SOX6. (DQDTVMKAIQEARKMREIQIREQQQQ)
Conjugation	Un-conjugated
Alternate Names	HSSOX6; Transcription factor SOX-6; SOXD

Application Instructions

Application table	Application	Dilution
	FACS	1:150 - 1:500
	IHC-P	1:200 - 1:1000
	WB	1:500 - 1:2000

Application Note IHC-P: Antigen Retrieval: Heat mediation was performed in EDTA buffer (pH 8.0).
* The dilutions indicate recommended starting dilutions and the optimal dilutions or concentrations should be determined by the scientist.

Properties

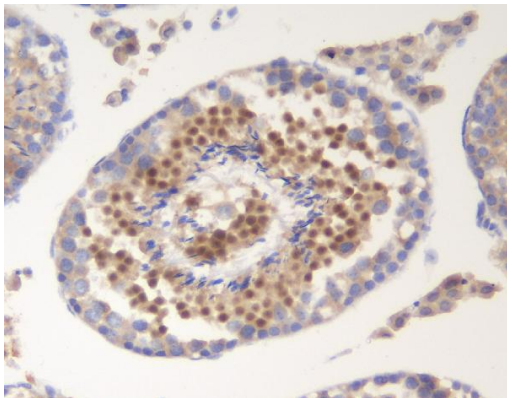
Form	Liquid
Purification	Affinity purification with immunogen.
Buffer	0.2% Na ₂ HPO ₄ , 0.9% NaCl, 0.01% Sodium azide and 4% Trehalose.
Preservative	0.01% Sodium azide
Stabilizer	4% Trehalose
Concentration	0.5 mg/ml
Storage instruction	For continuous use, store undiluted antibody at 2-8°C for up to a week. For long-term storage, aliquot and store at -20°C or below. Storage in frost free freezers is not recommended. Avoid repeated freeze/thaw cycles. Suggest spin the vial prior to opening. The antibody solution should be gently mixed before use.

Note For laboratory research only, not for drug, diagnostic or other use.

Bioinformation

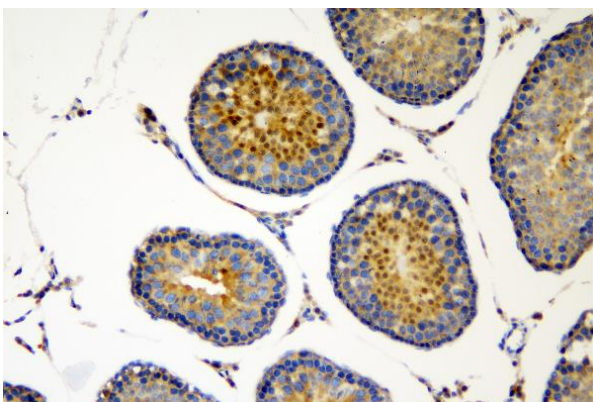
Gene Symbol	SOX6
Gene Full Name	SRY (sex determining region Y)-box 6
Background	This gene encodes a member of the D subfamily of sex determining region y-related transcription factors that are characterized by a conserved DNA-binding domain termed the high mobility group box and by their ability to bind the minor groove of DNA. The encoded protein is a transcriptional activator that is required for normal development of the central nervous system, chondrogenesis and maintenance of cardiac and skeletal muscle cells. The encoded protein interacts with other family members to cooperatively activate gene expression. Alternative splicing results in multiple transcript variants. [provided by RefSeq, Mar 2009]
Function	Transcriptional activator. Binds specifically to the DNA sequence 5'-AACAAAT-3'. Plays a key role in several developmental processes, including neurogenesis and skeleton formation. [UniProt]
Calculated Mw	92 kDa
PTM	Sumoylation inhibits the transcriptional activity. [UniProt]
Cellular Localization	Nucleus. [UniProt]

Images



ARG43069 anti-SOX6 antibody IHC-P image

Immunohistochemistry: Paraffin-embedded Mouse testis tissue. Antigen Retrieval: Heat mediation was performed in EDTA buffer (pH 8.0). The tissue section was blocked with 10% goat serum. The tissue section was then stained with ARG43069 anti-SOX6 antibody at 2 µg/ml dilution, overnight at 4°C.

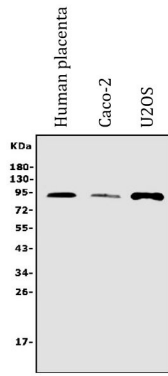


ARG43069 anti-SOX6 antibody IHC-P image

Immunohistochemistry: Paraffin-embedded Rat testis tissue. Antigen Retrieval: Heat mediation was performed in EDTA buffer (pH 8.0). The tissue section was blocked with 10% goat serum. The tissue section was then stained with ARG43069 anti-SOX6 antibody at 2 µg/ml dilution, overnight at 4°C.

ARG43069 anti-SOX6 antibody WB image

Western blot: 50 µg of sample under reducing conditions. Human placenta, Caco-2 and U2OS whole cell lysates stained with ARG43069 anti-SOX6 antibody at 0.5 µg/ml dilution, overnight at 4°C.



ARG43069 anti-SOX6 antibody FACS image

Flow Cytometry: A549 cells were blocked with 10% normal goat serum and then stained with ARG43069 anti-SOX6 antibody (blue) at 1 µg/10⁶ cells for 30 min at 20°C, followed by incubation with DyLight[®]488 labelled secondary antibody. Isotype control antibody (green) was rabbit IgG (1 µg/10⁶ cells) used under the same conditions. Unlabelled sample (red) was also used as a control.

