

ARG43614 anti-PLAP / Placental alkaline phosphatase antibody

Package: 50 µg
Store at: -20°C

Summary

Product Description	Rabbit Polyclonal antibody recognizes PLAP / Placental alkaline phosphatase
Tested Reactivity	Hu
Tested Application	FACS, ICC/IF, IHC-P, WB
Host	Rabbit
Clonality	Polyclonal
Isotype	IgG
Target Name	PLAP / Placental alkaline phosphatase
Species	Human
Immunogen	Synthetic peptide corresponding to a.a. 403-433 of Human PLAP / Placental alkaline phosphatase.
Conjugation	Un-conjugated
Alternate Names	PALP; PLAP; EC 3.1.3.1; Alkaline phosphatase Regan isozyme; Placental alkaline phosphatase 1; PLAP-1; Alkaline phosphatase, placental type; ALP

Application Instructions

Application table	Application	Dilution
	FACS	1:500 - 1:200 / 1X10 ⁶ cells
	ICC/IF	1:50 - 1:100
	IHC-P	1:50 - 1:250
	WB	1:500 - 1:2500
Application Note	IHC-P: Antigen Retrieval: Boil tissue section in EDTA buffer (pH 8.0). * The dilutions indicate recommended starting dilutions and the optimal dilutions or concentrations should be determined by the scientist.	
Observed Size	~ 70 kDa	

Properties

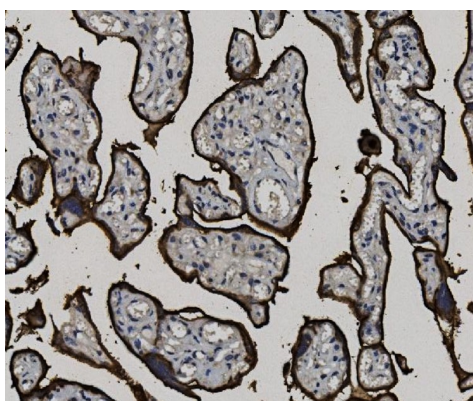
Form	Liquid
Purification	Affinity purification with immunogen.
Buffer	0.9% NaCl, 0.2% Na ₂ HPO ₄ , 0.05% Sodium azide and 4% Trehalose.
Preservative	0.05% Sodium azide
Stabilizer	4% Trehalose
Concentration	0.5 mg/ml

Storage instruction	For continuous use, store undiluted antibody at 2-8°C for up to a week. For long-term storage, aliquot and store at -20°C. Storage in frost free freezers is not recommended. Avoid repeated freeze/thaw cycles. Suggest spin the vial prior to opening. The antibody solution should be gently mixed before use.
Note	For laboratory research only, not for drug, diagnostic or other use.

Bioinformation

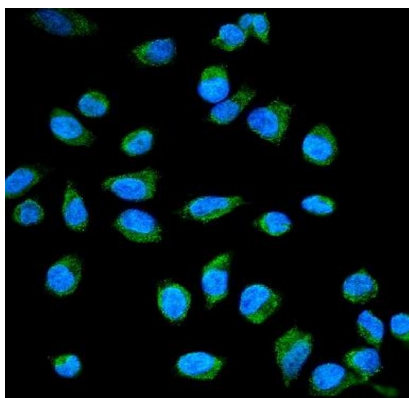
Gene Symbol	ALPP
Gene Full Name	alkaline phosphatase, placental
Background	The protein encoded by this gene is an alkaline phosphatase, a metalloenzyme that catalyzes the hydrolysis of phosphoric acid Polyesters. It belongs to a multigene family composed of four alkaline phosphatase isoenzymes. The enzyme functions as a homodimer and has a catalytic site containing one magnesium and two zinc ions, which are required for its enzymatic function. The protein is primarily expressed in placental and endometrial tissue; however, strong ectopic expression has been detected in ovarian adenocarcinoma, serous cystadenocarcinoma, and other ovarian cancer cells. [provided by RefSeq, Jan 2015]
Function	Alkaline phosphatase that can hydrolyze various phosphate compounds. [UniProt]
Calculated Mw	58 kDa
PTM	Disulfide bond; Glycoprotein; GPI-anchor; Lipoprotein
Cellular Localization	Cell membrane; Lipid-anchor, GPI-anchor. [UniProt]

Images



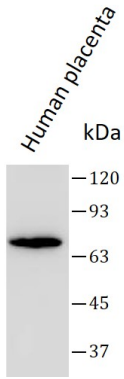
ARG43614 anti-PLAP / Placental alkaline phosphatase antibody IHC-P image

Immunohistochemistry: Human placenta ARG43614 anti-PLAP / Placental alkaline phosphatase antibody at 1:250 dilution.



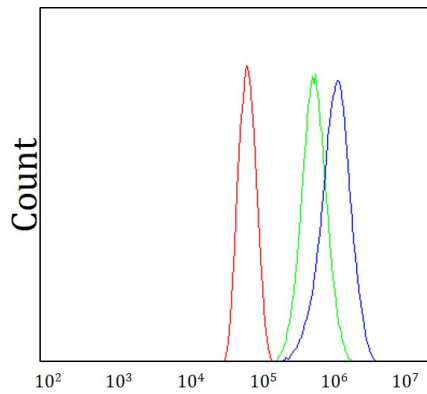
ARG43614 anti-PLAP / Placental alkaline phosphatase antibody ICC/IF image

Immunofluorescence: HeLa cell stained with ARG43614 anti-PLAP / Placental alkaline phosphatase antibody at 1:250 dilution.



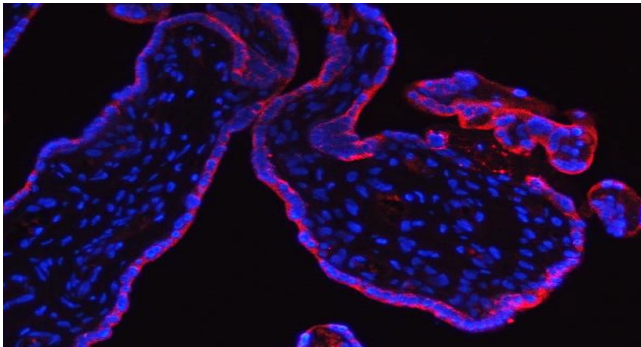
ARG43614 anti-PLAP / Placental alkaline phosphatase antibody WB image

Western blot: Human placenta cell lysates stained with ARG43614 anti-PLAP / Placental alkaline phosphatase antibody at 1:1000 dilution.



ARG43614 anti-PLAP / Placental alkaline phosphatase antibody FACS image

Flow Cytometry: SiHa cells stained with ARG43614 anti-PLAP / Placental alkaline phosphatase antibody at 1:500 / 1×10^6 cells.



ARG43614 anti-PLAP / Placental alkaline phosphatase antibody ICC/IF image

Immunofluorescence: Human placenta stained with ARG43614 anti-PLAP / Placental alkaline phosphatase antibody at 1:250 dilution.