

## ARG43815 anti-S100A2 antibody [CPTC]

Package: 50 µl  
Store at: -20°C

### Summary

Product Description	Mouse Monoclonal antibody [CPTC] recognizes S100A2
Tested Reactivity	Hu
Tested Application	FACS, ICC/IF, IHC-P, WB
Host	Mouse
Clonality	Monoclonal
Clone	CPTC
Isotype	IgG2B
Target Name	S100A2
Species	Human
Immunogen	Recombinant human S100A2 antibody.
Conjugation	Un-conjugated
Alternate Names	S100A2, S100 Calcium Binding Protein A2, CAN19, S100L, S100 Calcium-Binding Protein A2, Protein S100-A2, Protein S-100L

### Application Instructions

Application table	Application	Dilution
	FACS	1:100 - 1:200
	ICC/IF	1 - 2 µg/ml
	IHC-P	1:200 - 1:400
	WB	1:100 - 1:200
Positive Control	A549	

### Properties

Form	Liquid
Purification	Protein G affinity purified
Buffer	PBS, 0.05% sodium azide and with 0.1% BSA
Preservative	0.05% sodium azide
Stabilizer	0.1% BSA
Concentration	1 mg/ml
Storage instruction	For continuous use, store undiluted antibody at 2-8°C for up to a week. For long-term storage, aliquot and store at -20°C or below. Storage in frost free freezers is not recommended. Avoid repeated freeze/thaw cycles. Suggest spin the vial prior to opening. The antibody solution should be gently mixed

before use.

Note

For laboratory research only, not for drug, diagnostic or other use.

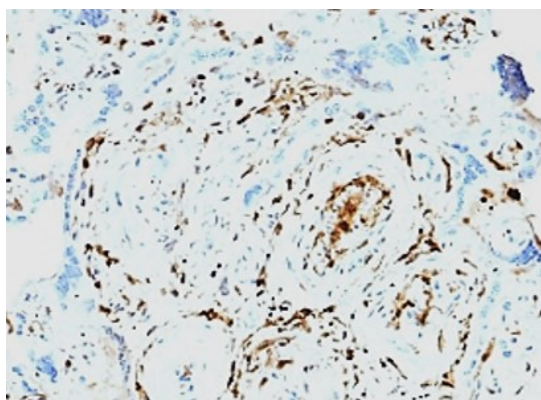
## Bioinformation

---

Gene Symbol	S100A2
Gene Full Name	S100 Calcium Binding Protein A2
Background	The protein encoded by this gene is a member of the S100 family of proteins containing 2 EF-hand calcium-binding motifs. S100 proteins are localized in the cytoplasm and/or nucleus of a wide range of cells, and involved in the regulation of a number of cellular processes such as cell cycle progression and differentiation. S100 genes include at least 13 members which are located as a cluster on chromosome 1q21. This protein may have a tumor suppressor function. Chromosomal rearrangements and altered expression of this gene have been implicated in breast cancer. [provided by RefSeq, Jul 2008]
Function	May function as calcium sensor and modulator, contributing to cellular calcium signaling. May function by interacting with other proteins, such as TPR-containing proteins, and indirectly play a role in many physiological processes. May also play a role in suppressing tumor cell growth. [UniProt]
Calculated Mw	11 kDa

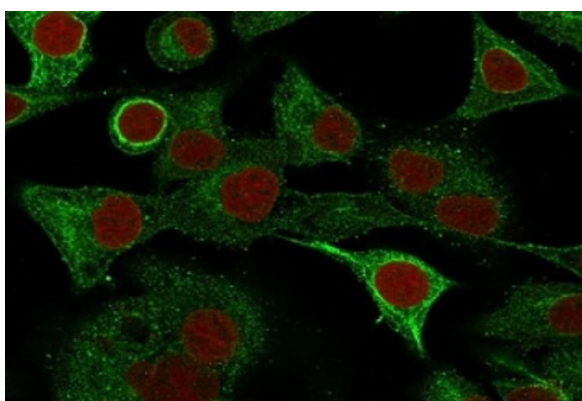
## Images

---



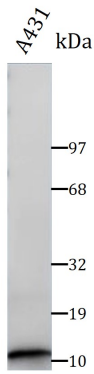
ARG43815 anti-S100A2 antibody [CPTC] IHC-P image

Immunohistochemistry: Formalin-fixed and paraffin-embedded human placenta tissue stained with ARG43815 anti-S100A2 antibody [CPTC]. Antigen Retrieval: Heat mediated was performed using 10mM citrate buffer pH 6.0.



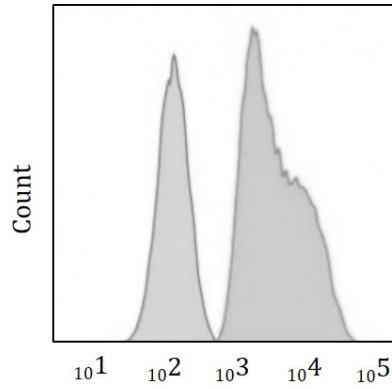
ARG43815 anti-S100A2 antibody [CPTC] ICC/IF image

Immunofluorescence: A549 cells stained with ARG43815 anti-S100A2 antibody.



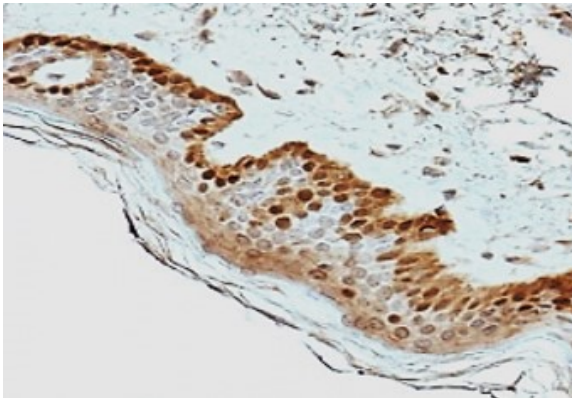
#### ARG43815 anti-S100A2 antibody [CPTC] WB image

Western blot: A549 stained with ARG43815 anti-S100A2 antibody [CPTC].



#### ARG43815 anti-S100A2 antibody [CPTC] FACS image

Flow Cytometry: HeLa cells stained ARG43815 anti-S100A2 antibody [CPTC].



#### ARG43815 anti-S100A2 antibody [CPTC] IHC-P image

Immunohistochemistry: Formalin-fixed and paraffin-embedded human placenta tissue stained with ARG43815 anti-S100A2 antibody [CPTC]. Antigen Retrieval: Heat mediated was performed using 10mM citrate buffer pH 6.0.