

ARG43886 anti-PAN2 antibody

Package: 50 µg
Store at: -20°C

Summary

Product Description	Rabbit Polyclonal antibody recognizes PAN2
Tested Reactivity	Hu, Ms, Rat
Tested Application	ELISA, FACS, WB
Host	Rabbit
Clonality	Polyclonal
Isotype	IgG
Target Name	PAN2
Species	Human
Immunogen	Human PAN2 recombinant protein
Conjugation	Un-conjugated
Alternate Names	PAN2; Poly(A) Specific Ribonuclease Subunit PAN2; KIAA0710; USP52; PAN2-PAN3 Deadenylation Complex Catalytic Subunit PAN2; Inactive Ubiquitin Carboxyl-Terminal Hydrolase 52; Poly(A)-Nuclease Deadenylation Complex Subunit 2; PAB1P-Dependent Poly(A)-Specific Ribonuclease; PAN Deadenylation Complex Subunit 2; Ubiquitin Specific Peptidase 52; Ubiquitin Specific Protease 52; EC 3.1.13.4; HPAN2; PAN2 Homolog, PABP1 Dependent Poly A Specific Ribonuclease Subunit (S. Cerevisiae); PAN2 Poly(A) Specific Ribonuclease Subunit Homolog (S. Cerevisiae); PAB-Dependent Poly(A)-Specific Ribonuclease Subunit PAN2; PAB-Dependent Poly(A)-Specific Ribonuclease Subunit 2; PAN2 Poly(A) Specific Ribonuclease Subunit Homolog; PAN Deadenylation Complex Catalytic Subunit 2; PAN2 Poly(A) Specific Ribonuclease Subunit; PABP-Dependent Poly(A) Nuclease 2; PAB1P-Dependent Poly(A)-Nuclease

Application Instructions

Application table	Application	Dilution
	ELISA	0.1-0.5 µg/ml
	FACS	1-3 µg/1x10 ⁶
	WB	0.1-0.25 µg/ml
Application Note	* The dilutions indicate recommended starting dilutions and the optimal dilutions or concentrations should be determined by the scientist.	

Properties

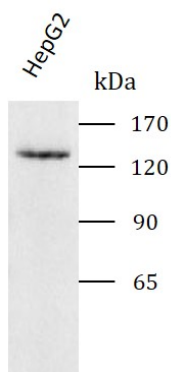
Form	Liquid
Purification	Affinity purified with Immunogen.
Buffer	0.9% NaCl, 0.2% Na ₂ HPO ₄ and 4% Trehalose.
Stabilizer	4% Trehalose

Concentration	0.5 mg/ml
Storage instruction	For continuous use, store undiluted antibody at 2-8°C for up to a week. For long-term storage, aliquot and store at -20°C or below. Storage in frost free freezers is not recommended. Avoid repeated freeze/thaw cycles. Suggest spin the vial prior to opening. The antibody solution should be gently mixed before use.
Note	For laboratory research only, not for drug, diagnostic or other use.

Bioinformation

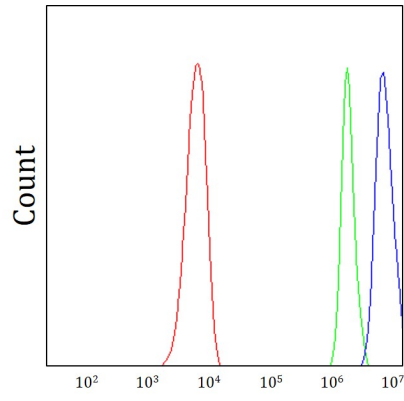
Gene Symbol	PAN2
Gene Full Name	Poly(A) Specific Ribonuclease Subunit PAN2
Background	This gene encodes a deadenylase that functions as the catalytic subunit of the polyadenylate binding protein dependent poly(A) nuclease complex. The encoded protein is a magnesium dependent 3' to 5' exoribonuclease that is involved in the degradation of cytoplasmic mRNAs. Alternate splicing results in multiple transcript variants.
Function	Catalytic subunit of the poly(A)-nuclease (PAN) deadenylation complex, one of two cytoplasmic mRNA deadenylases involved in general and miRNA-mediated mRNA turnover. PAN specifically shortens poly(A) tails of RNA and the activity is stimulated by poly(A)-binding protein (PABP). PAN deadenylation is followed by rapid degradation of the shortened mRNA tails by the CCR4-NOT complex. Deadened mRNAs are then degraded by two alternative mechanisms, namely exosome-mediated 3'-5' exonucleolytic degradation, or deadenylation-dependent mRNA decapping and subsequent 5'-3' exonucleolytic degradation by XRN1. Also acts as an important regulator of the HIF1A-mediated hypoxic response. Required for HIF1A mRNA stability independent of poly(A) tail length regulation.
Calculated Mw	135 kDa
PTM	Phosphoprotein
Cellular Localization	Cytoplasm, Nucleus

Images



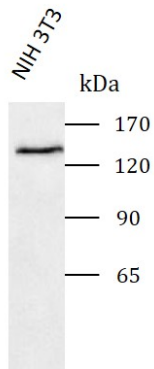
ARG43886 anti-PAN2 antibody WB image

Western blot: HepG2 stained with ARG43886 anti-PAN2 antibody at 0.25 µg/mL.



ARG43886 anti-PAN2 antibody FACS image

Flow Cytometry: PC-3 cells stained with ARG43886 anti-PAN2 antibody (blue) at 1 $\mu\text{g}/1 \times 10^6$ cells dilution.



ARG43886 anti-PAN2 antibody WB image

Western blot: NIH 3T3 stained with ARG43886 anti-PAN2 antibody at 0.25 $\mu\text{g}/\text{mL}$.