

ARG43894 anti-APLP1 antibody

Package: 50 µg
Store at: -20°C

Summary

Product Description	Rabbit Polyclonal antibody recognizes APLP1
Tested Reactivity	Hu, Ms, Rat
Tested Application	ELISA, FACS, WB
Host	Rabbit
Clonality	Polyclonal
Isotype	IgG
Target Name	APLP1
Species	Human
Immunogen	Human APLP1 recombinant protein
Conjugation	Un-conjugated
Alternate Names	APLP1; Amyloid Beta Precursor Like Protein 1; APLP; Amyloid Beta (A4) Precursor-Like Protein 1; Amyloid-Like Protein 1; Amyloid Precursor-Like Protein 1; APLP-1

Application Instructions

Application table	Application	Dilution
	ELISA	0.1-0.5 µg/ml
	FACS	1-3 µg /1x10 ⁶
	WB	0.25-0.5 µg/ml

Application Note * The dilutions indicate recommended starting dilutions and the optimal dilutions or concentrations should be determined by the scientist.

Properties

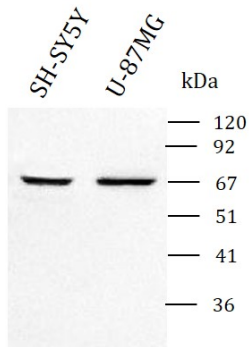
Form	Liquid
Purification	Affinity purified with Immunogen.
Buffer	0.9% NaCl, 0.2% Na ₂ HPO ₄ and 4% Trehalose.
Stabilizer	4% Trehalose
Concentration	0.5 mg/ml
Storage instruction	For continuous use, store undiluted antibody at 2-8°C for up to a week. For long-term storage, aliquot and store at -20°C or below. Storage in frost free freezers is not recommended. Avoid repeated freeze/thaw cycles. Suggest spin the vial prior to opening. The antibody solution should be gently mixed before use.
Note	For laboratory research only, not for drug, diagnostic or other use.

Bioinformation

Gene Symbol	APLP1
Gene Full Name	Amyloid Beta Precursor Like Protein 1
Background	This gene encodes a member of the highly conserved amyloid precursor protein gene family. The encoded protein is a membrane-associated glycoprotein that is cleaved by secretases in a manner similar to amyloid beta A4 precursor protein cleavage. This cleavage liberates an intracellular cytoplasmic fragment that may act as a transcriptional activator. The encoded protein may also play a role in synaptic maturation during cortical development. Alternatively spliced transcript variants encoding different isoforms have been described.
Function	Couples to JIP signal transduction through C-terminal binding. May interact with cellular G-protein signaling pathways. Can regulate neurite outgrowth through binding to components of the extracellular matrix such as heparin and collagen I.
Calculated Mw	72 kDa
PTM	Disulfide bond, Glycoprotein
Cellular Localization	Cell membrane, Cytoplasm, Membrane

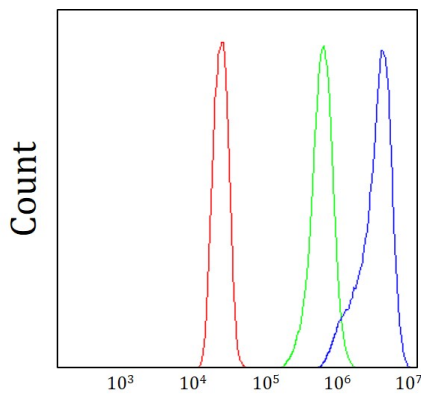
Images

ARG43894 anti-APLP1 antibody WB image



Western blot: SH-SY5Y and U-87MG stained with ARG43894 anti-APLP1 antibody at 0.5 $\mu\text{g}/\text{mL}$ dilution.

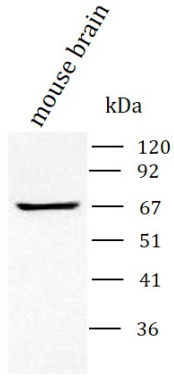
ARG43894 anti-APLP1 antibody FACS image



Flow Cytometry: SiHa cells stained with ARG43894 anti-APLP1 antibody (blue) at 1 $\mu\text{g}/1 \times 10^6$ cells dilution.

ARG43894 anti-APLP1 antibody WB image

Western blot: Mousebrain stained with ARG43894 anti-APLP1 antibody at 0.5 µg/mL dilution.



ARG43894 anti-APLP1 antibody WB image

Western blot: Rat brain and Rat liver stained with ARG43894 anti-APLP1 antibody at 0.5 µg/mL dilution.

