

## ARG43923 anti-POLR1B antibody

Package: 50 µg  
Store at: -20°C

### Summary

Product Description	Rabbit Polyclonal antibody recognizes POLR1B
Tested Reactivity	Hu
Tested Application	ELISA, FACS, ICC/IF, IHC-P, WB
Host	Rabbit
Clonality	Polyclonal
Isotype	IgG
Target Name	POLR1B
Species	Human
Immunogen	Human POLR1B recombinant protein
Conjugation	Un-conjugated
Alternate Names	POLR1B; RNA Polymerase I Subunit B; RPA135; Rpo1-2; RPA2; DNA-Directed RNA Polymerase I 135 KDa Polypeptide; DNA-Directed RNA Polymerase I Subunit RPA2; Polymerase (RNA) I Polypeptide B, 128kDa; RNA Polymerase I Subunit 2; EC 2.7.7.6; FLJ21921; FLJ10816; DNA-Directed RNA Polymerase I 135kDa Polypeptide; Polymerase (RNA) I Subunit B; A135; TCS4

### Application Instructions

Application table	Application	Dilution
	ELISA	0.1-0.5 µg/ml
	FACS	1-3 µg/1x10 <sup>6</sup> cells
	ICC/IF	5 µg/ml
	IHC-P	2-5 µg/ml
	WB	0.25-0.5 µg/ml

**Application Note** \* The dilutions indicate recommended starting dilutions and the optimal dilutions or concentrations should be determined by the scientist.

### Properties

Form	Liquid
Purification	Affinity purified with Immunogen.
Buffer	0.9% NaCl, 0.2% Na <sub>2</sub> HPO <sub>4</sub> and 4% Trehalose.
Stabilizer	4% Trehalose
Concentration	0.5 mg/ml
Storage instruction	For continuous use, store undiluted antibody at 2-8°C for up to a week. For long-term storage, aliquot and store at -20°C or below. Storage in frost free freezers is not recommended. Avoid repeated

freeze/thaw cycles. Suggest spin the vial prior to opening. The antibody solution should be gently mixed before use.

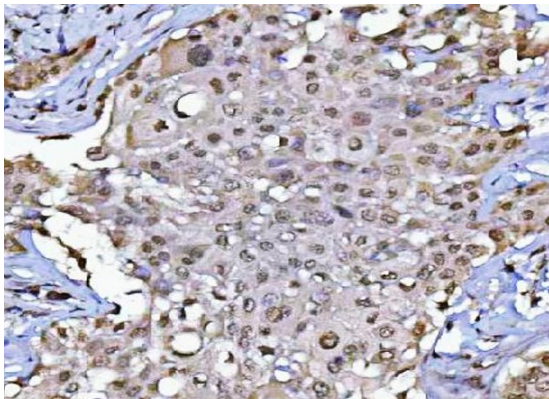
**Note** For laboratory research only, not for drug, diagnostic or other use.

## Bioinformation

---

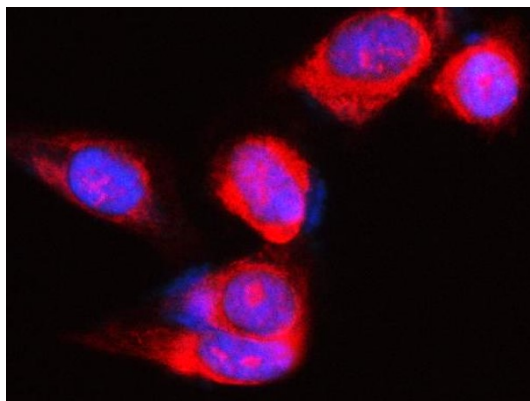
Gene Symbol	POLR1B
Gene Full Name	RNA Polymerase I Subunit B
Background	Eukaryotic RNA polymerase I (pol I) is responsible for the transcription of ribosomal RNA (rRNA) genes and production of rRNA, the primary component of ribosomes. Pol I is a multisubunit enzyme composed of 6 to 14 polypeptides, depending on the species. Most of the mass of the pol I complex derives from the 2 largest subunits, Rpa1 and Rpa2 in yeast. POLR1B is homologous to Rpa2.
Function	DNA-dependent RNA polymerase catalyzes the transcription of DNA into RNA using the four ribonucleoside triphosphates as substrates. Second largest core component of RNA polymerase I which synthesizes ribosomal RNA precursors. Proposed to contribute to the polymerase catalytic activity and forms the polymerase active center together with the largest subunit. Pol I is composed of mobile elements and RPA2 is part of the core element with the central large cleft and probably a clamp element that moves to open and close the cleft.
Calculated Mw	128 kDa
PTM	Phosphoprotein
Cellular Localization	Chromosome, DNA-directed RNA polymerase, Nucleus

## Images



ARG43923 anti-POLR1B antibody IHC-P image

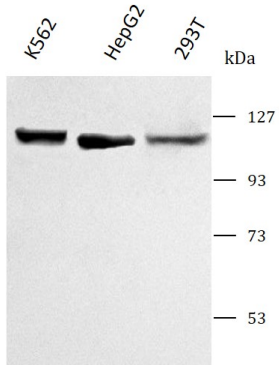
Immunohistochemistry: Human lymphoma stained with ARG43923 anti-POLR1B antibody at 2 µg/ml dilution.



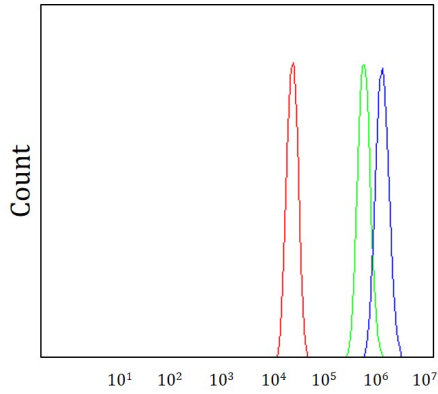
ARG43923 anti-POLR1B antibody ICC/IF image

Immunofluorescence: PC-3 cells stained with ARG43923 anti-POLR1B antibody at 5 µg/ml dilution.

ARG43923 anti-POLR1B antibody WB image



Western blot: K562, HepG2 and 293T stained with ARG43923 anti-POLR1B antibody at 0.5  $\mu\text{g}/\text{mL}$  dilution.



ARG43923 anti-POLR1B antibody FACS FACS image

Flow Cytometry: A431 cells stained with ARG43923 anti-POLR1B antibody (blue) at 1  $\mu\text{g}/1 \times 10^6$  cells dilution.