

ARG43957 anti-PIGS antibody

Package: 50 µg
Store at: -20°C

Summary

Product Description	Rabbit Polyclonal antibody recognizes PIGS
Tested Reactivity	Hu, Rat
Tested Application	ELISA, FACS, ICC/IF, WB
Host	Rabbit
Clonality	Polyclonal
Isotype	IgG
Target Name	PIGS
Species	Human
Immunogen	Human PIGS recombinant protein
Conjugation	Un-conjugated
Alternate Names	PIGS; Phosphatidylinositol Glycan Anchor Biosynthesis Class S; GPI Transamidase Component PIG-S; Phosphatidylinositol-Glycan Biosynthesis Class S Protein ; Phosphatidylinositol Glycan, Class S; GPI Transamidase Subunit; PIG-S; GPIBD18; DEE95

Application Instructions

Application table	Application	Dilution
	ELISA	0.1-0.5 µg/ml
	FACS	1-3 µg /1x10 ⁶ cells
	ICC/IF	5 µg/ml
	WB	0.25-0.5 µg/ml

Application Note * The dilutions indicate recommended starting dilutions and the optimal dilutions or concentrations should be determined by the scientist.

Properties

Form	Liquid
Purification	Affinity purified with Immunogen.
Buffer	0.9% NaCl, 0.2% Na ₂ HPO ₄ and 4% Trehalose.
Stabilizer	4% Trehalose
Concentration	0.5 mg/ml
Storage instruction	For continuous use, store undiluted antibody at 2-8°C for up to a week. For long-term storage, aliquot and store at -20°C or below. Storage in frost free freezers is not recommended. Avoid repeated freeze/thaw cycles. Suggest spin the vial prior to opening. The antibody solution should be gently mixed before use.

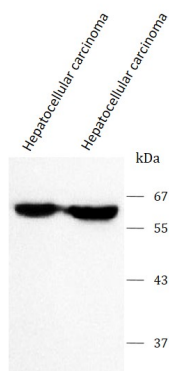
Note

For laboratory research only, not for drug, diagnostic or other use.

Bioinformation

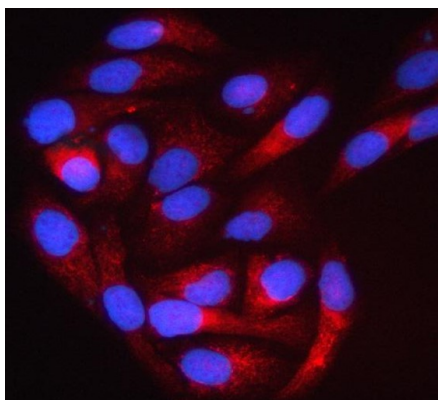
Gene Symbol	PIGS
Gene Full Name	Phosphatidylinositol Glycan Anchor Biosynthesis Class S
Background	This gene encodes a protein that is involved in GPI-anchor biosynthesis. The glycosylphosphatidylinositol (GPI) anchor is a glycolipid found on many blood cells and serves to anchor proteins to the cell surface. This gene encodes an essential component of the multisubunit enzyme, GPI transamidase. GPI transamidase mediates GPI anchoring in the endoplasmic reticulum, by catalyzing the transfer of fully assembled GPI units to proteins.
Function	Component of the GPI transamidase complex. Essential for transfer of GPI to proteins, particularly for formation of carbonyl intermediates.
Calculated Mw	62 kDa
PTM	Glycoprotein
Cellular Localization	Endoplasmic reticulum, Membrane

Images



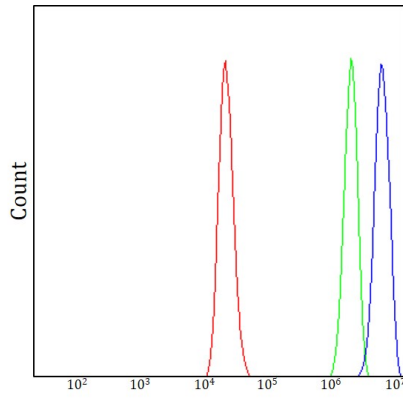
ARG43957 anti-PIGS antibody WB image

Western blot: Human hepatocellular carcinoma tumor tissue and Human hepatocellular carcinoma paracancerous stained with ARG43957 anti-PIGS antibody at 0.5 $\mu\text{g}/\text{mL}$ dilution.



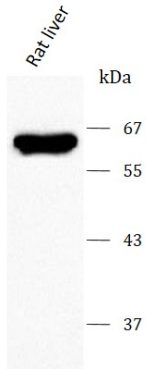
ARG43957 anti-PIGS antibody ICC/IF image

Immunofluorescence: HeLa cells stained with ARG43957 anti-PIGS antibody at 5 $\mu\text{g}/\text{ml}$ dilution.



ARG43957 anti-PIGS antibody FACS image

Flow Cytometry: HELA cells stained with ARG43957 anti-PIGS antibody (blue) at $1 \mu\text{g}/1 \times 10^6$ cells dilution.



ARG43957 anti-PIGS antibody WB image

Western blot: Rat liver stained with ARG43957 anti-PIGS antibody at $0.5 \mu\text{g}/\text{mL}$ dilution.