

ARG43960 anti-NAA16 antibody

Package: 50 µg
Store at: -20°C

Summary

Product Description	Rabbit Polyclonal antibody recognizes NAA16
Tested Reactivity	Hu, Ms, Rat
Tested Application	ELISA, FACS, WB
Host	Rabbit
Clonality	Polyclonal
Isotype	IgG
Target Name	NAA16
Species	Human
Immunogen	Human NAA16 recombinant protein
Conjugation	Un-conjugated
Alternate Names	NAA16; N-Alpha-Acetyltransferase 16, NatA Auxiliary Subunit; NARG1L; NMDA Receptor-Regulated 1-Like Protein; NARG1-Like Protein; FLJ22054; MGC40612; PRO2435; N(Alpha)-Acetyltransferase 16, NatA Auxiliary Subunit; NMDA Receptor Regulated 1-Like; NAT2

Application Instructions

Application table	Application	Dilution
	ELISA	0.1-0.5 µg/ml
	FACS	1-3 µg /1x10 ⁶ cells
	WB	0.25-0.5 µg/ml

Application Note * The dilutions indicate recommended starting dilutions and the optimal dilutions or concentrations should be determined by the scientist.

Properties

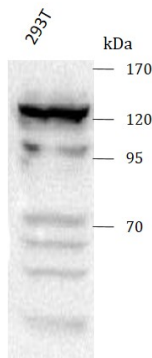
Form	Liquid
Purification	Affinity purified with Immunogen.
Buffer	0.9% NaCl, 0.2% Na ₂ HPO ₄ and 4% Trehalose.
Stabilizer	4% Trehalose
Concentration	0.5 mg/ml
Storage instruction	For continuous use, store undiluted antibody at 2-8°C for up to a week. For long-term storage, aliquot and store at -20°C or below. Storage in frost free freezers is not recommended. Avoid repeated freeze/thaw cycles. Suggest spin the vial prior to opening. The antibody solution should be gently mixed before use.
Note	For laboratory research only, not for drug, diagnostic or other use.

Bioinformation

Gene Symbol	NAA16
Gene Full Name	N-Alpha-Acetyltransferase 16, NatA Auxiliary Subunit
Background	Enables ribosome binding activity. Involved in N-terminal protein amino acid acetylation; negative regulation of apoptotic process; and protein stabilization. Located in cytosol. Part of NatA complex.
Function	Auxillary subunit of the N-terminal acetyltransferase A (NatA) complex which displays alpha (N-terminal) acetyltransferase activity.
Calculated Mw	101 kDa

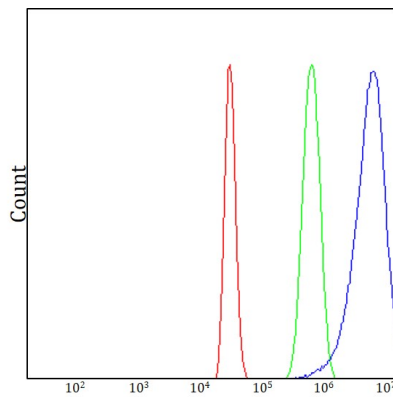
Images

ARG43960 anti-NAA16 antibody WB image



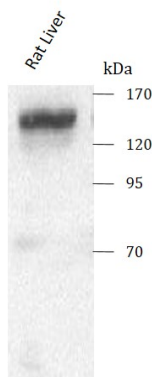
Western blot: 293T stained with ARG43960 anti-NAA16 antibody at 0.5 $\mu\text{g}/\text{mL}$ dilution.

ARG43960 anti-NAA16 antibody FACS image



Flow Cytometry: HepG2 cells stained with ARG43960 anti-NAA16 antibody (blue) at 1 $\mu\text{g}/1 \times 10^6$ cells dilution.

ARG43960 anti-NAA16 antibody WB image



Western blot: Rat Liver stained with ARG43960 anti-NAA16 antibody at 0.5 $\mu\text{g}/\text{mL}$ dilution.

ARG43960 anti-NAA16 antibody WB image

Western blot: Mouse Liver stained with ARG43960 anti-NAA16 antibody at 0.5 µg/mL dilution.

