

ARG43961 anti-NAAA antibody

Package: 50 µg
Store at: -20°C

Summary

Product Description	Rabbit Polyclonal antibody recognizes NAAA
Tested Reactivity	Hu, Ms, Rat
Tested Application	ELISA, FACS, WB
Host	Rabbit
Clonality	Polyclonal
Isotype	IgG
Target Name	NAAA
Species	Human
Immunogen	Human NAAA recombinant protein
Conjugation	Un-conjugated
Alternate Names	NAAA; N-Acylethanolamine Acid Amidase; ASAHL; N-Acylethanolamine-Hydrolyzing Acid Amidase; Acylsphingosine Deacylase NAAA; Acid Ceramidase-Like Protein; ASAH-Like Protein; PLT; N-Acylsphingosine Amidohydrolase (Acid Ceramidase)-Like; N-Acylsphingosine Amidohydrolase-Like; EC 3.5.1.60; EC 3.5.1.23

Application Instructions

Application table	Application	Dilution
	ELISA	0.1-0.5 µg/ml
	FACS	1-3 µg /1x10 ⁶ cells
	WB	0.25-0.5 µg/ml

Application Note * The dilutions indicate recommended starting dilutions and the optimal dilutions or concentrations should be determined by the scientist.

Properties

Form	Liquid
Purification	Affinity purified with Immunogen.
Buffer	0.9% NaCl, 0.2% Na ₂ HPO ₄ and 4% Trehalose.
Stabilizer	4% Trehalose
Concentration	0.5 mg/ml
Storage instruction	For continuous use, store undiluted antibody at 2-8°C for up to a week. For long-term storage, aliquot and store at -20°C or below. Storage in frost free freezers is not recommended. Avoid repeated freeze/thaw cycles. Suggest spin the vial prior to opening. The antibody solution should be gently mixed before use.

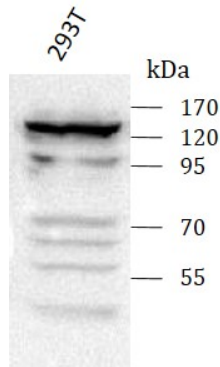
Note

For laboratory research only, not for drug, diagnostic or other use.

Bioinformation

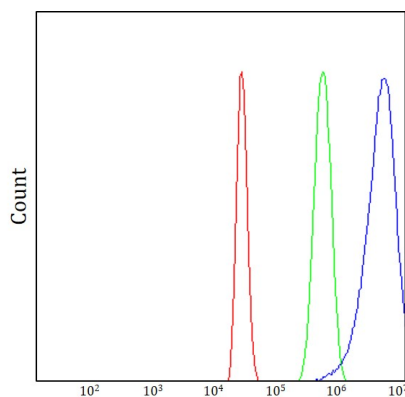
Gene Symbol	NAAA
Gene Full Name	N-Acylethanolamine Acid Amidase
Background	Enables N-(long-chain-acyl)ethanolamine deacylase activity; N-acylsphingosine amidohydrolase activity; and fatty acid amide hydrolase activity. Involved in several processes, including N-acylethanolamine metabolic process; N-acylphosphatidylethanolamine metabolic process; and sphingosine metabolic process. Located in lysosome. Is extrinsic component of membrane.
Function	Degrades bioactive fatty acid amides to their corresponding acids, with the following preference: N-palmitoylethanolamine > N-myristoylethanolamine > N-lauroylethanolamine = N-stearoylethanolamine > N-arachidonoylethanolamine > N-oleoylethanolamine.
Calculated Mw	40 kDa
PTM	Autocatalytic cleavage, Disulfide bond, Glycoprotein, Zymogen
Cellular Localization	Lysosome, Membrane

Images



ARG43961 anti-NAAA antibody WB image

Western blot: 293T stained with ARG43961 anti-NAAA antibody at 0.5 $\mu\text{g}/\text{mL}$ dilution.

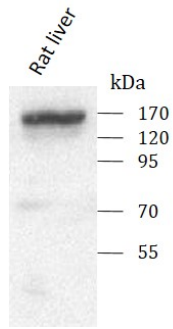


ARG43961 anti-NAAA antibody FACS image

Flow Cytometry: HepG2 cells stained with ARG43961 anti-NAAA antibody (blue) at 1 $\mu\text{g}/1 \times 10^6$ cells dilution.

ARG43961 anti-NAAA antibody WB image

Western blot: Rat liver stained with ARG43961 anti-NAAA antibody at 0.5 $\mu\text{g}/\text{mL}$ dilution.



ARG43961 anti-NAAA antibody WB image

Western blot: Mouse liver stained with ARG43961 anti-NAAA antibody at 0.5 $\mu\text{g}/\text{mL}$ dilution.

