

ARG43997 anti-PSMD2 / Proteasome 26S S2 antibody

Package: 50 µg
Store at: -20°C

Summary

Product Description	Rabbit Polyclonal antibody recognizes PSMD2 / Proteasome 26S S2
Tested Reactivity	Hu, Rat, Mk
Tested Application	ELISA, ICC/IF, WB
Host	Rabbit
Clonality	Polyclonal
Isotype	IgG
Target Name	PSMD2 / Proteasome 26S S2
Species	Human
Immunogen	Human PSMD2 / Proteasome 26S S2 recombinant protein
Conjugation	Un-conjugated
Alternate Names	PSMD2; Proteasome 26S Subunit Ubiquitin Receptor, Non-ATPase 2; TRAP2; P97; S2; Proteasome (Prosome, Macropain) 26S Subunit, Non-ATPase, 2; Tumor Necrosis Factor Type 1 Receptor-Associated Protein 2; 26S Proteasome Non-ATPase Regulatory Subunit 2; Proteasome 26S Subunit, Non-ATPase 2; Protein 55.11; MGC14274; Rpn1; 26S Proteasome Regulatory Subunit RPN1; 26S Proteasome Regulatory Subunit S2; 26S Proteasome Subunit P97; TNFR-Associated Protein 2; 55.11 Protein; RPN1

Application Instructions

Application table	Application	Dilution
	ELISA	0.1-0.5 µg/ml
	ICC/IF	5 µg/ml
	WB	0.1-0.25 µg/ml

Application Note * The dilutions indicate recommended starting dilutions and the optimal dilutions or concentrations should be determined by the scientist.

Properties

Form	Liquid
Purification	Affinity purified with Immunogen.
Buffer	0.9% NaCl, 0.2% Na ₂ HPO ₄ and 4% Trehalose.
Stabilizer	4% Trehalose
Concentration	0.5 mg/ml
Storage instruction	For continuous use, store undiluted antibody at 2-8°C for up to a week. For long-term storage, aliquot and store at -20°C or below. Storage in frost free freezers is not recommended. Avoid repeated freeze/thaw cycles. Suggest spin the vial prior to opening. The antibody solution should be gently mixed before use.

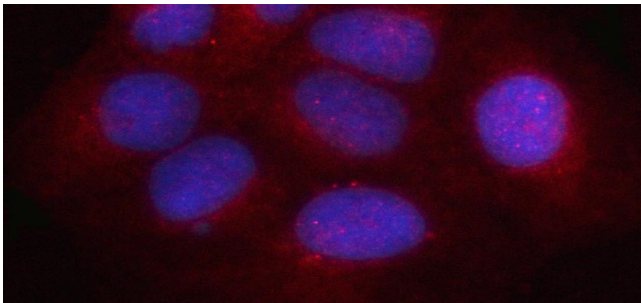
Note

For laboratory research only, not for drug, diagnostic or other use.

Bioinformation

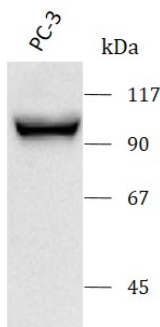
Gene Symbol	PSMD2
Gene Full Name	Proteasome 26S Subunit Ubiquitin Receptor, Non-ATPase 2
Background	<p>The 26S proteasome is a multicatalytic proteinase complex with a highly ordered structure composed of 2 complexes, a 20S core and a 19S regulator. The 20S core is composed of 4 rings of 28 non-identical subunits; 2 rings are composed of 7 alpha subunits and 2 rings are composed of 7 beta subunits. The 19S regulator is composed of a base, which contains 6 ATPase subunits and 2 non-ATPase subunits, and a lid, which contains up to 10 non-ATPase subunits. Proteasomes are distributed throughout eukaryotic cells at a high concentration and cleave peptides in an ATP/ubiquitin-dependent process in a non-lysosomal pathway. An essential function of a modified proteasome, the immunoproteasome, is the processing of class I MHC peptides. This gene encodes one of the non-ATPase subunits of the 19S regulator lid. In addition to participation in proteasome function, this subunit may also participate in the TNF signalling pathway since it interacts with the tumor necrosis factor type 1 receptor. A pseudogene has been identified on chromosome 1. Alternative splicing results in multiple transcript variants of this gene.</p>
Function	<p>Component of the 26S proteasome, a multiprotein complex involved in the ATP-dependent degradation of ubiquitinated proteins. This complex plays a key role in the maintenance of protein homeostasis by removing misfolded or damaged proteins, which could impair cellular functions, and by removing proteins whose functions are no longer required. Therefore, the proteasome participates in numerous cellular processes, including cell cycle progression, apoptosis, or DNA damage repair.</p>
Calculated Mw	100 kDa
PTM	Acetylation, Phosphoprotein
Cellular Localization	Proteasome

Images



ARG43997 anti-PSMD2 / Proteasome 26S S2 antibody ICC/IF image

Immunofluorescence: U2OS cells stained with ARG43997 anti-PSMD2 / Proteasome 26S S2 antibody at 5 µg/ml dilution.

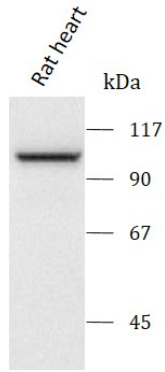


ARG43997 anti-PSMD2 / Proteasome 26S S2 antibody WB image

Western blot: PC-3 stained with ARG43997 anti-PSMD2 / Proteasome 26S S2 antibody at 0.25 µg/mL dilution.

ARG43997 anti-PSMD2 / Proteasome 26S S2 antibody WB image

Western blot: Rat heart stained with ARG43997 anti-PSMD2 / Proteasome 26S S2 antibody at 0.25 µg/mL dilution.



ARG43997 anti-PSMD2 / Proteasome 26S S2 antibody WB image

Western blot: COS-7 stained with ARG43997 anti-PSMD2 / Proteasome 26S S2 antibody at 0.25 µg/mL dilution.

