

ARG44043 anti-FKBP38 antibody

Package: 100 µl
Store at: -20°C

Summary

Product Description	Rabbit Polyclonal antibody recognizes FKBP38
Tested Reactivity	Hu, Ms, Rat
Tested Application	ICC/IF, IP, WB
Host	Rabbit
Clonality	Polyclonal
Isotype	IgG
Target Name	FKBP8
Species	Human
Immunogen	Recombinant fusion protein containing a sequence corresponding to amino acids 60-270 of Human FKBP38/FKBP38/FKBP8 (NP_036313.3).
Conjugation	Un-conjugated
Alternate Names	FKBP8; FKBP Prolyl Isomerase 8; FKBP38; FKBP38; Peptidyl-Prolyl Cis-Trans Isomerase FKBP8; FK506 Binding Protein 8, 38kDa; 38 KDa FK506-Binding Protein; FK506-Binding Protein 8; PPIase FKBP8; 38 KDa FKBP; Rotamase; FKBP-38; HFKBP38; FKBP-8; FK506-Binding Protein 8 (38kD); FK506 Binding Protein 8; EC 5.2.1.8; FKBP38

Application Instructions

Application table	Application	Dilution
	ICC/IF	1:50 - 1:100
	IP	1:50 - 1:200
	WB	1:500 - 1:2000

Application Note * The dilutions indicate recommended starting dilutions and the optimal dilutions or concentrations should be determined by the scientist.

Properties

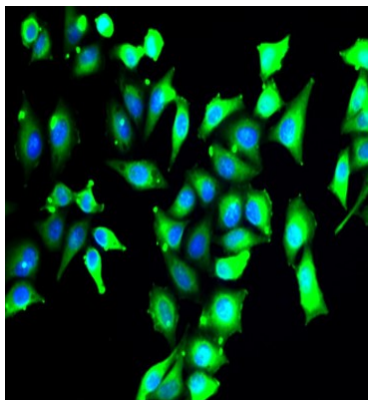
Form	Liquid
Purification	Affinity purified.
Buffer	PBS (pH 7.3), 0.02% sodium azide and 50% Glycerol.
Preservative	0.02% sodium azide
Stabilizer	50% Glycerol
Storage instruction	For continuous use, store undiluted antibody at 2-8°C for up to a week. For long-term storage, aliquot and store at -20°C. Storage in frost free freezers is not recommended. Avoid repeated freeze/thaw cycles. Suggest spin the vial prior to opening. The antibody solution should be gently mixed before use.

Note For laboratory research only, not for drug, diagnostic or other use.

Bioinformation

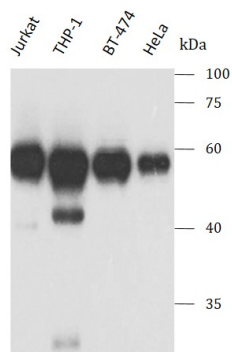
Gene Symbol	FKBP8
Gene Full Name	FKBP Prolyl Isomerase
Background	The protein encoded by this gene is a member of the immunophilin protein family, which play a role in immunoregulation and basic cellular processes involving protein folding and trafficking. Unlike the other members of the family, this encoded protein does not seem to have PPIase/rotamase activity. It may have a role in neurons associated with memory function.
Function	Constitutively inactive PPIase, which becomes active when bound to calmodulin and calcium. Seems to act as a chaperone for BCL2, targets it to the mitochondria and modulates its phosphorylation state. The BCL2/FKBP8/calmodulin/calcium complex probably interferes with the binding of BCL2 to its targets. The active form of FKBP8 may therefore play a role in the regulation of apoptosis. Involved in the inhibition of viral infection by influenza A viruses (IAV).
Calculated Mw	45 kDa
PTM	Isopeptide bond, Phosphoprotein, Ubl conjugation
Cellular Localization	Membrane, Mitochondrion

Images



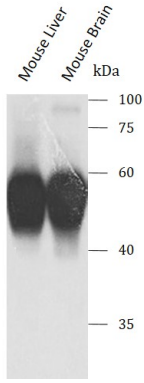
ARG44043 anti-FKBP38 antibody ICC/IF image

Immunofluorescence: A549 stained with ARG44043 anti-FKBP38 antibody.



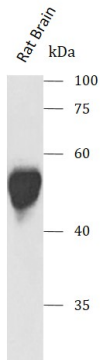
ARG44043 anti-FKBP38 antibody WB image

Western blot: Jurkat, THP1-1, BT-474 and HeLa stained with ARG44043 anti-FKBP38 antibody at 1:1000 dilution.



ARG44043 anti-FKBP38 antibody WB image

Western blot: Mouse Liver and Mouse Brain stained with ARG44043 anti-FKBP38 antibody at 1:1000 dilution.



ARG44043 anti-FKBP38 antibody WB image

Western blot: Rat Brain stained with ARG44043 anti-FKBP38 antibody at 1:1000 dilution.