

## ARG44077 anti-PRODH antibody

Package: 50 µg  
Store at: -20°C

### Summary

Product Description	Rabbit Polyclonal recognizes PRODH
Tested Reactivity	Hu, Ms, Rat
Tested Application	FACS, IHC-P, WB
Host	Rabbit
Clonality	Polyclonal
Isotype	IgG
Target Name	PRODH
Species	Human
Immunogen	Human PRODH recombinant protein (Position: H116-E433).
Conjugation	Un-conjugated
Alternate Names	TP53I6; Proline oxidase 2; POX; EC 1.5.5.2; PRODH1; PRODH2; HSPOX2; p53-induced gene 6 protein; PIG6; Proline dehydrogenase 1, mitochondrial; Proline oxidase

### Application Instructions

Application table	Application	Dilution
	FACS	1 - 3 µg/10 <sup>6</sup> cells
	IHC-P	2 - 5 µg/ml
	WB	0.25 - 0.5 µg/ml

**Application Note** The dilutions indicate recommended starting dilutions and the optimal dilutions or concentrations should be determined by the scientist.

### Properties

Form	Liquid
Purification	Affinity purification with immunogen.
Buffer	0.9% NaCl, 0.2% Na <sub>2</sub> HPO <sub>4</sub> , 0.05% Sodium azide and 4% Trehalose.
Preservative	0.05% Sodium azide
Stabilizer	4% Trehalose
Concentration	0.5 mg/ml
Storage instruction	For continuous use, store undiluted antibody at 2-8°C for up to a week. For long-term storage, aliquot and store at -20°C or below. Storage in frost free freezers is not recommended. Avoid repeated freeze/thaw cycles. Suggest spin the vial prior to opening. The antibody solution should be gently mixed before use.

Note

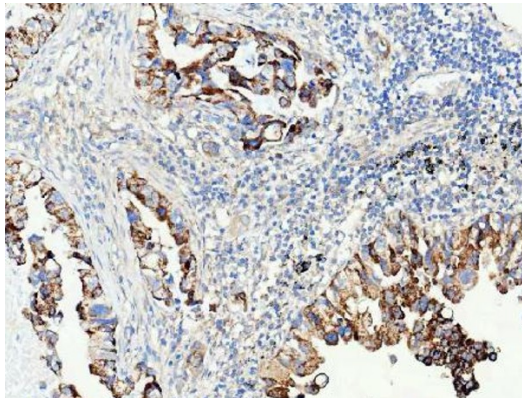
For laboratory research only, not for drug, diagnostic or other use.

## Bioinformation

---

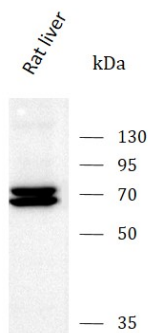
Gene Symbol	PRODH
Background	This gene encodes a mitochondrial protein that catalyzes the first step in proline degradation. Mutations in this gene are associated with hyperprolinemia type 1 and susceptibility to schizophrenia 4 (SCZD4). This gene is located on chromosome 22q11.21, a region which has also been associated with the contiguous gene deletion syndromes, DiGeorge and CATCH22. Alternatively spliced transcript variants encoding different isoforms have been found for this gene. [provided by RefSeq, Aug 2010]
Research Area	Cancer antibody; Cell Biology and Cellular Response antibody; Cell Death antibody; Metabolism antibody; Signaling Transduction antibody
Calculated Mw	68 kDa

## Images



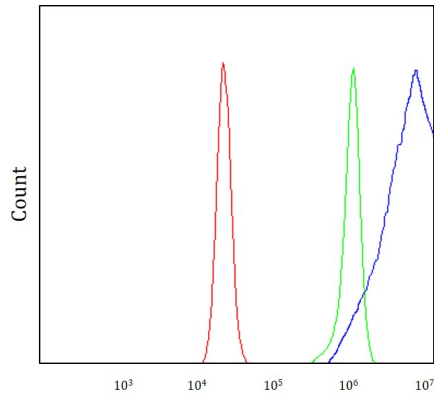
ARG44077 anti-PRODH antibody IHC-P image

Immunohistochemistry: Human lung adenocarcinoma stained with ARG44077 anti-PRODH antibody at 2 µg/ml dilution.



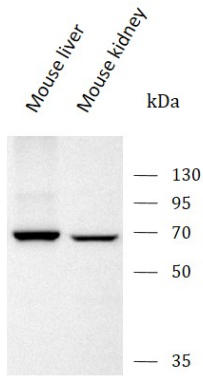
ARG44077 anti-PRODH antibody WB image

Western blot: Rat liver stained with ARG44077 anti-PRODH antibody at 0.5 µg/mL dilution.



#### ARG44077 anti-PRODH antibody FACS image

Flow Cytometry: RT4 stained with ARG44077 anti-PRODH antibody at  $1 \mu\text{g}/10^6$  cells dilution.



#### ARG44077 anti-PRODH antibody WB image

Western blot: Mouse liver and Mouse kidney stained with ARG44077 anti-PRODH antibody at  $0.5 \mu\text{g}/\text{mL}$  dilution.