

ARG44165 anti-METTL11A antibody

Package: 50 µg
Store at: -20°C

Summary

Product Description	Rabbit Polyclonal antibody recognizes METTL11A
Tested Reactivity	Hu
Tested Application	FACS, ICC/IF, IHC-P, WB
Host	Rabbit
Clonality	Polyclonal
Isotype	IgG
Target Name	METTL11A
Species	Human
Immunogen	Recombinant protein of Human METTL11A
Conjugation	Un-conjugated
Alternate Names	NTMT1; N-Terminal Xaa-Pro-Lys N-Methyltransferase 1; NRMT1; NRMT; METTL11A; C9orf32; AD-003; HOMT1A; X-Pro-Lys N-Terminal Protein Methyltransferase 1A; Alpha N-Terminal Protein Methyltransferase 1A; Methyltransferase-Like Protein 11A; N-Terminal RCC1 Methyltransferase; NTM1A; Chromosome 9 Open Reading Frame 32; Methyltransferase Like 11A; EC 2.1.1.244

Application Instructions

Application table	Application	Dilution
	FACS	1-3 µg / 10 ⁶ cells
	ICC/IF	5 µg/ml
	IHC-P	2-5 µg/ml
	WB	0.25-0.5 µg/ml

Application Note * The dilutions indicate recommended starting dilutions and the optimal dilutions or concentrations should be determined by the scientist.

Properties

Form	Liquid
Purification	Affinity purification with immunogen.
Buffer	0.9% NaCl, 0.2% Na ₂ HPO ₄ , 0.05% Sodium azide and 5% BSA.
Preservative	0.05% Sodium azide
Stabilizer	5% BSA
Concentration	0.5 mg/ml
Storage instruction	For continuous use, store undiluted antibody at 2-8°C for up to a week. For long-term storage, aliquot and store at -20°C or below. Storage in frost free freezers is not recommended. Avoid repeated

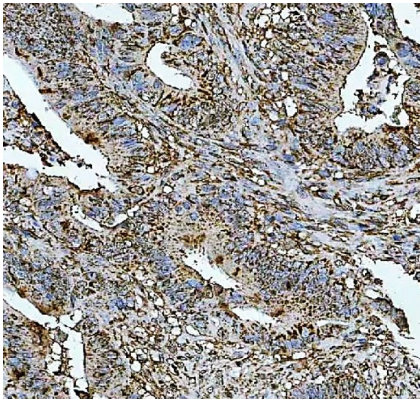
freeze/thaw cycles. Suggest spin the vial prior to opening. The antibody solution should be gently mixed before use.

Note For laboratory research only, not for drug, diagnostic or other use.

Bioinformation

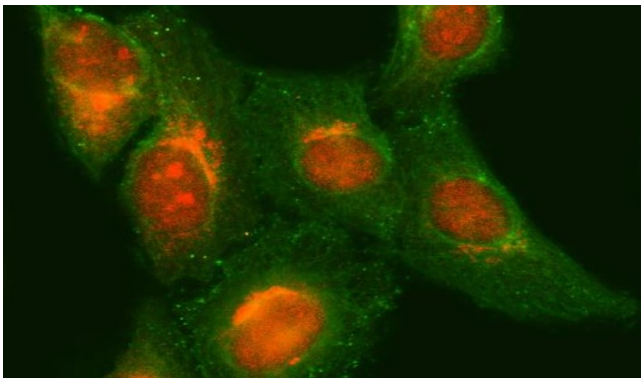
Gene Symbol	NTMT1
Gene Full Name	N-Terminal Xaa-Pro-Lys N-Methyltransferase 1
Background	The METTL11A gene encodes an N-terminal methyltransferase for the RAN (MIM 601179) guanine nucleotide exchange factor regulator of chromosome condensation 1 (RCC1; MIM 179710). METTL11A enzyme alpha-N-methylates other protein targets such as SET (MIM 600960) and RB (MIM 180200).
Function	Distributive alpha-N-methyltransferase that methylates the N-terminus of target proteins containing the N-terminal motif [Ala/Gly/Pro/Ser]-Pro-Lys when the initiator Met is cleaved. Specifically catalyzes mono-, di- or tri-methylation of the exposed alpha-amino group of the Ala, Gly or Ser residue in the [Ala/Gly/Ser]-Pro-Lys motif and mono- or di-methylation of Pro in the Pro-Pro-Lys motif. Some of the substrates may be primed by NTMT2-mediated monomethylation.
Calculated Mw	25 kDa
PTM	Acetylation
Cellular Localization	Nucleus

Images



ARG44165 anti-METTL11A antibody IHC-P image

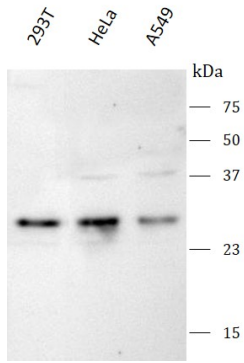
Immunohistochemistry: Human colorectal adenocarcinoma stained with ARG44165 anti-METTL11A antibody at 2 µg/mL dilution.



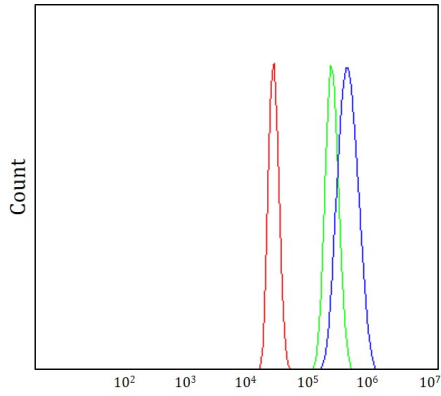
ARG44165 anti-METTL11A antibody ICC/IF image

Immunofluorescence: HeLa stained with ARG44165 anti-METTL11A antibody at 5 µg/mL dilution.

ARG44165 anti-METTL11A antibody WB image

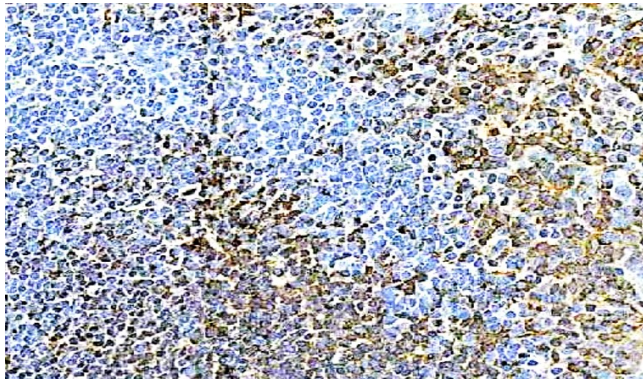


Western blot: 293T, HeLa and A549 stained with ARG44165 anti-METTL11A antibody at 0.5 $\mu\text{g}/\text{mL}$ dilution.



ARG44165 anti-METTL11A antibody FACS image

Flow Cytometry: HepG2 stained with ARG44165 anti-METTL11A antibody at 1 $\mu\text{g}/1 \times 10^6$ cells dilution.



ARG44165 anti-METTL11A antibody IHC-P image

Immunohistochemistry: Human tonsil stained with ARG44165 anti-METTL11A antibody at 2 $\mu\text{g}/\text{mL}$ dilution.