

ARG44337 anti-MCF2 antibody

Package: 100 µl
Store at: -20°C

Summary

Product Description	Rabbit Polyclonal recognizes MCF2
Tested Reactivity	Hu, Ms
Tested Application	WB
Host	Rabbit
Clonality	Polyclonal
Isotype	IgG
Target Name	MCF2
Immunogen	Recombinant fusion protein of human MCF2(aa sequence 872-1001)
Conjugation	Un-conjugated
Alternate Names	MCF2; MCF.2 Cell Line Derived Transforming Sequence; DBL; ARHGEF21; Oncogene MCF2 (Oncogene DBL); Proto-Oncogene MCF-2; Proto-Oncogene DBL

Application Instructions

Application table	Application	Dilution
	WB	1:500 - 1:3000

Application Note * The dilutions indicate recommended starting dilutions and the optimal dilutions or concentrations should be determined by the scientist.

Properties

Form	Liquid
Buffer	PBS (pH 7.3) and 0.01% Sodium azide.
Preservative	0.01% Sodium azide
Storage instruction	For continuous use, store undiluted antibody at 2-8°C for up to a week. For long-term storage, aliquot and store at -20°C or below. Storage in frost free freezers is not recommended. Avoid repeated freeze/thaw cycles. Suggest spin the vial prior to opening. The antibody solution should be gently mixed before use.
Note	For laboratory research only, not for drug, diagnostic or other use.

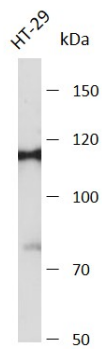
Bioinformation

Gene Symbol	MCF2
Gene Full Name	MCF.2 Cell Line Derived Transforming Sequence
Background	The oncogenic protein encoded by this gene is a guanine nucleotide exchange factor (GEF) that exerts control over some members of the Rho family of small GTPases. Several transcript variants encoding

different isoforms have been found for this gene. These isoforms exhibit different expression patterns and varying levels of GEF activity.

Function	Guanine nucleotide exchange factor (GEF) that modulates the Rho family of GTPases. Promotes the conversion of some member of the Rho family GTPase from the GDP-bound to the GTP-bound form. Isoform 1 exhibits no activity toward RHOA, RAC1 or CDC42. Isoform 2 exhibits decreased GEF activity toward CDC42. Isoform 3 exhibits a weak but significant activity toward RAC1 and CDC42. Isoform 4 exhibits significant activity toward RHOA and CDC42. The truncated DBL oncogene is active toward RHOA, RAC1 and CDC42.
Calculated Mw	108 kDa
PTM	Phosphoprotein
Cellular Localization	Cytoplasm, Membrane

Images



ARG44337 anti-MCF2 antibody WB image

Western blot: HT-29 stained with ARG44337 anti-MCF2 antibody at 1:3000 dilution.