

ARG44412
anti-LAP3 antibodyPackage: 50 µg
Store at: -20°C

Summary

Product Description	Rabbit Polyclonal antibody recognizes LAP3
Tested Reactivity	Hu, Ms, Rat
Tested Application	ICC/IF, IHC-P, WB
Host	Rabbit
Clonality	Polyclonal
Isotype	IgG
Target Name	LAP3
Species	Human
Immunogen	Human LAP3 recombinant protein (aa. sequence: R130-K497).
Conjugation	Un-conjugated
Alternate Names	LAP3; Leucine Aminopeptidase 3; LAPEP; Peptidase S; PEPS; LAP; Cysteinylglycine-S-Conjugate Dipeptidase; Cytosol Aminopeptidase; Proline Aminopeptidase; Leucyl Aminopeptidase; Prolyl Aminopeptidase

Application Instructions

Application table	Application	Dilution
	ICC/IF	5 µg/ml
	IHC-P	2-5 µg/ml
	WB	0.25-0.5 µg/ml

Application Note The dilutions indicate recommended starting dilutions and the optimal dilutions or concentrations should be determined by the scientist.

Properties

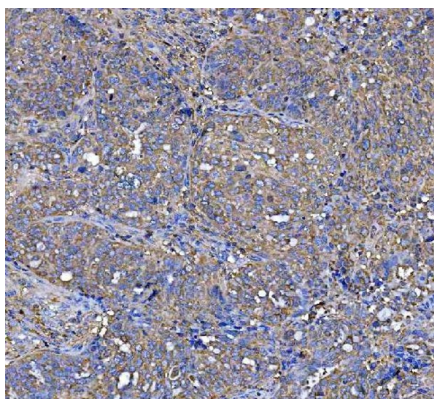
Form	Liquid
Purification	Affinity purified with Immunogen.
Buffer	0.9% NaCl, 0.2% Na ₂ HPO ₄ , 0.05% Sodium azide and 4% Trehalose.
Preservative	0.05% Sodium azide
Stabilizer	4% Trehalose
Concentration	0.5 mg/ml
Storage instruction	For continuous use, store undiluted antibody at 2-8°C for up to a week. For long-term storage, aliquot and store at -20°C or below. Storage in frost free freezers is not recommended. Avoid repeated freeze/thaw cycles. Suggest spin the vial prior to opening. The antibody solution should be gently mixed before use.

Note For laboratory research only, not for drug, diagnostic or other use.

Bioinformation

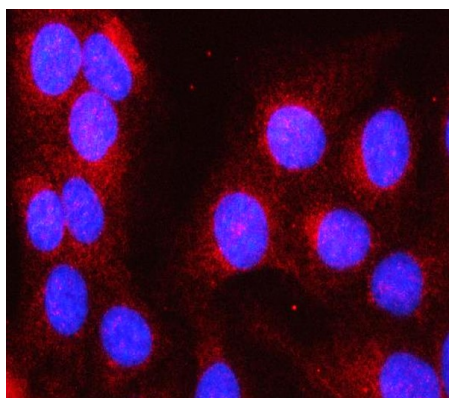
Gene Symbol	LAP3
Gene Full Name	Leucine Aminopeptidase 3
Background	Predicted to enable peptidase activity. Predicted to be involved in proteolysis. Located in cytosol; midbody; and nucleoplasm.
Function	Cytosolic metallopeptidase that catalyzes the removal of unsubstituted N-terminal hydrophobic amino acids from various peptides. The presence of Zn ²⁺ ions is essential for the peptidase activity, and the association with other cofactors can modulate the substrate specificity of the enzyme. For instance, in the presence of Mn ²⁺ , it displays a specific Cys-Gly hydrolyzing activity of Cys-Gly-S-conjugates. Involved in the metabolism of glutathione and in the degradation of glutathione S-conjugates, which may play a role in the control of the cell redox status.
Calculated Mw	56 kDa
PTM	Acetylation, Phosphoprotein
Cellular Localization	Cytoplasm

Images



ARG44412 anti-LAP3 antibody IHC-P image

Immunohistochemistry: Human ovarian serous adenocarcinoma stained with ARG44412 anti-LAP3 antibody at 2 µg/mL dilution.

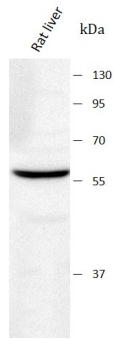


ARG44412 anti-LAP3 antibody ICC/IF image

Immunofluorescence: U2OS stained with ARG44412 anti-LAP3 antibody at 5 µg/mL dilution.

ARG44412 anti-LAP3 antibody WB image

Western blot: Rat liver stained with ARG44412 anti-LAP3 antibody at 0.5 $\mu\text{g}/\text{mL}$ dilution.



ARG44412 anti-LAP3 antibody WB image

Western blot: Mouse liver stained with ARG44412 anti-LAP3 antibody at 0.5 $\mu\text{g}/\text{mL}$ dilution.

