

ARG59762 anti-Noelin antibody

Package: 100 µl
Store at: -20°C

Summary

| | |
|---------------------|--|
| Product Description | Rabbit Polyclonal antibody recognizes Noelin |
| Tested Reactivity | Hu, Ms |
| Tested Application | WB |
| Host | Rabbit |
| Clonality | Polyclonal |
| Isotype | IgG |
| Target Name | Noelin |
| Species | Human |
| Immunogen | Recombinant fusion protein corresponding to aa. 90-220 of Human Noelin (NP_055094.1). |
| Conjugation | Un-conjugated |
| Alternate Names | OlfA; NOE1; NOELIN1; AMY; Olfactomedin-1; Neuronal olfactomedin-related ER localized protein; Noelin |

Application Instructions

| Application table | Application | Dilution |
|-------------------|--|----------------|
| | WB | 1:500 - 1:2000 |
| Application Note | * The dilutions indicate recommended starting dilutions and the optimal dilutions or concentrations should be determined by the scientist. | |
| Positive Control | MCF-7 and Mouse brain | |
| Observed Size | 72 kDa | |

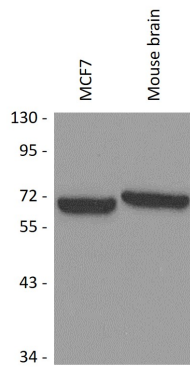
Properties

| | |
|---------------------|---|
| Form | Liquid |
| Purification | Affinity purified. |
| Buffer | PBS (pH 7.3), 0.02% Sodium azide and 50% Glycerol. |
| Preservative | 0.02% Sodium azide |
| Stabilizer | 50% Glycerol |
| Storage instruction | For continuous use, store undiluted antibody at 2-8°C for up to a week. For long-term storage, aliquot and store at -20°C. Storage in frost free freezers is not recommended. Avoid repeated freeze/thaw cycles. Suggest spin the vial prior to opening. The antibody solution should be gently mixed before use. |
| Note | For laboratory research only, not for drug, diagnostic or other use. |

Bioinformation

| | |
|-----------------------|---|
| Gene Symbol | OLFM1 |
| Gene Full Name | olfactomedin 1 |
| Background | This gene product shares extensive sequence similarity with the rat neuronal olfactomedin-related ER localized protein. While the exact function of the encoded protein is not known, its abundant expression in brain suggests that it may have an essential role in nerve tissue. Several alternatively spliced transcripts encoding different isoforms have been found for this gene. [provided by RefSeq, Jul 2008] |
| Function | May play an important role in regulating the production of neural crest cells by the neural tube. [UniProt] |
| Calculated Mw | 55 kDa |
| Cellular Localization | Secreted. Cell junction, synapse. Endoplasmic reticulum. Cell projection, axon. Perikaryon. [UniProt] |

Images



ARG59762 anti-Noelin antibody WB image

Western blot: 25 µg of MCF7 and Mouse brain lysates stained with ARG59762 anti-Noelin antibody at 1:1000 dilution.