

ARG67011 anti-EEA1 antibody

Package: 100 µl
Store at: -20°C

Summary

Product Description	Rabbit Polyclonal antibody recognizes EEA1
Tested Reactivity	Hu, Ms, Rat
Tested Application	ICC/IF, IHC-P, WB
Host	Rabbit
Clonality	Polyclonal
Isotype	IgG
Target Name	EEA1
Species	Human
Immunogen	Synthetic peptide corresponding to Human EEA1.
Conjugation	Un-conjugated
Alternate Names	Early endosome antigen 1; Zinc finger FYVE domain-containing protein 2; MST105; MSTP105; ZFYVE2; Endosome-associated protein p162

Application Instructions

Application table	Application	Dilution
	ICC/IF	1:500 - 1:1000
	IHC-P	1:100 - 1:300
	WB	1:1000 - 1:4000
Application Note	* The dilutions indicate recommended starting dilutions and the optimal dilutions or concentrations should be determined by the scientist.	
Positive Control	Colorectal cancer, MCF7, A549	
Observed Size	~170 kDa	

Properties

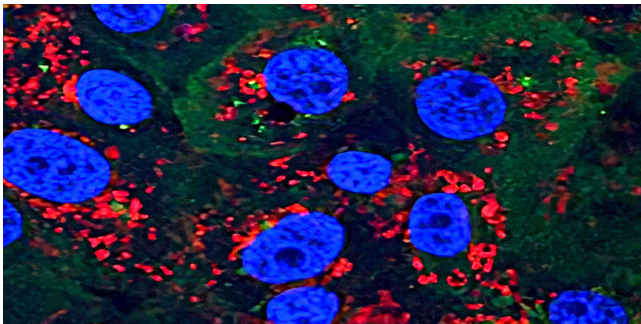
Form	Liquid
Purification	Affinity purified.
Buffer	100 mM Tris Glycine (pH 7.0), 0.025% ProClin 300 and 20% Glycerol.
Preservative	0.025% ProClin 300
Stabilizer	20% Glycerol
Storage instruction	For continuous use, store undiluted antibody at 2-8°C for up to a week. For long-term storage, aliquot and store at -20°C. Storage in frost free freezers is not recommended. Avoid repeated freeze/thaw cycles. Suggest spin the vial prior to opening. The antibody solution should be gently mixed before use.

Note For laboratory research only, not for drug, diagnostic or other use.

Bioinformation

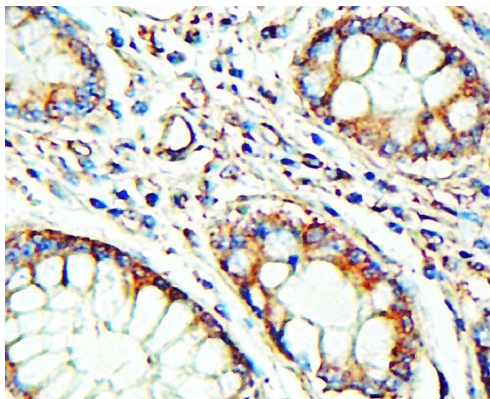
Gene Symbol	EEA1
Gene Full Name	early endosome antigen 1
Background	Enables 1-phosphatidylinositol binding activity; GTP-dependent protein binding activity; and protein homodimerization activity. Involved in endocytosis; vesicle fusion; and viral RNA genome replication. Located in cytosol and early endosome. Is extrinsic component of plasma membrane. [provided by Alliance of Genome Resources, Apr 2022]
Function	Binds phospholipid vesicles containing phosphatidylinositol 3-phosphate and participates in endosomal trafficking. [UniProt]
Calculated Mw	162 kDa
Cellular Localization	Cytoplasm. Early endosome membrane; Peripheral membrane protein. [UniProt]

Images



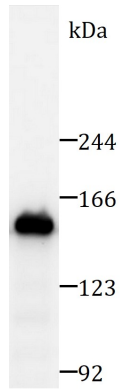
ARG67011 anti-EEA1 antibody ICC/IF image

Immunofluorescence: MCF7 cells were fixed with 4% paraformaldehyde at RT for 10 min, permeabilized with 0.1% NP-40 at RT for 10 min and then cells were blocked with 5% BSA at RT for 30 min and stained with ARG67011 anti-EEA1 antibody (red) at 1:500 dilution at 4°C for overnight. DAPI (blue) was used for nuclear staining.



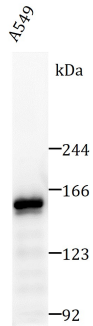
ARG67011 anti-EEA1 antibody IHC-P image

Immunohistochemistry: Paraffin-embedded Human colon cancer tissue stained with ARG67011 anti-EEA1 antibody at 1:100 dilution. Antigen Retrieval: Boil tissue section in Citrate buffer (pH 6.0).



ARG67011 anti-EEA1 antibody WB image

Western blot: A549 cell lysate stained with ARG67011 anti-EEA1 antibody at 1:2000 dilution, overnight at 4°C.



ARG67011 anti-EEA1 antibody WB image

Western blot: Mouse Testis tissue lysate stained with ARG67011 anti-EEA1 antibody at 1:2000 dilution, overnight at 4°C.