

ARG67073 anti-HIF-1 alpha antibody

Package: 100 µl
Store at: -20°C

Summary

| | |
|---------------------|---|
| Product Description | Mouse Monoclonal antibody recognizes HIF-1 alpha |
| Tested Reactivity | Hu, Ms, Rat |
| Tested Application | ELISA, ICC/IF, IHC-P, WB |
| Host | Mouse |
| Clonality | Monoclonal |
| Target Name | HIF-1 alpha |
| Species | Human |
| Immunogen | Synthetic peptide of human HIF-1alpha. |
| Conjugation | Un-conjugated |
| Alternate Names | HIF1A; Hypoxia Inducible Factor 1 Subunit Alpha; BHLHe78; PASD8; MOP1; Class E Basic Helix-Loop-Helix Protein 78; PAS Domain-Containing Protein 8; Member Of PAS Protein 1; HIF-1alpha; HIF1; Hypoxia Inducible Factor 1, Alpha Subunit (Basic Helix-Loop-Helix Transcription Factor); Basic-Helix-Loop-Helix-PAS Protein MOP1; Hypoxia-Inducible Factor 1-Alpha; HIF-1-Alpha; Hypoxia Inducible Factor 1 Alpha Subunit; Hypoxia-Inducible Factor1alpha; Member Of PAS Superfamily 1; ARNT Interacting Protein; ARNT-Interacting Protein; HIF1-ALPHA; HIF1-Alpha; BHLHE78; HIF-1A |

Application Instructions

| Application table | Application | Dilution |
|-------------------|-------------|----------------|
| | ELISA | 1:10000 |
| | ICC/IF | 1:200 - 1:1000 |
| | IHC-P | 1:200 - 1:1000 |
| | WB | 1:500 - 1:2000 |
| Observed Size | 92-130 kDa | |

Properties

| | |
|---------------------|--|
| Form | Liquid |
| Purification | Affinity Purified |
| Buffer | Ascitic fluid, 0.03% sodium azide, 50% glycerol and 0.5% BSA |
| Preservative | 0.03% sodium azide |
| Stabilizer | 50% glycerol and 0.5% BSA |
| Storage instruction | For continuous use, store undiluted antibody at 2-8°C for up to a week. For long-term storage, aliquot and store at -20°C or below. Storage in frost free freezers is not recommended. Avoid repeated freeze/thaw cycles. Suggest spin the vial prior to opening. The antibody solution should be gently mixed before use. |

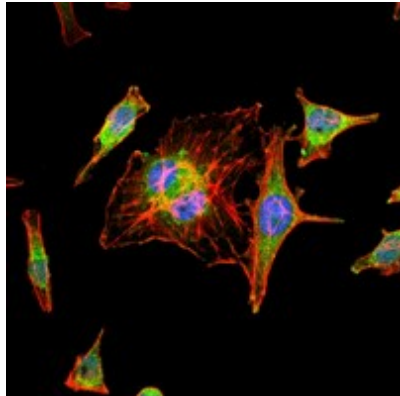
Note

For laboratory research only, not for drug, diagnostic or other use.

Bioinformation

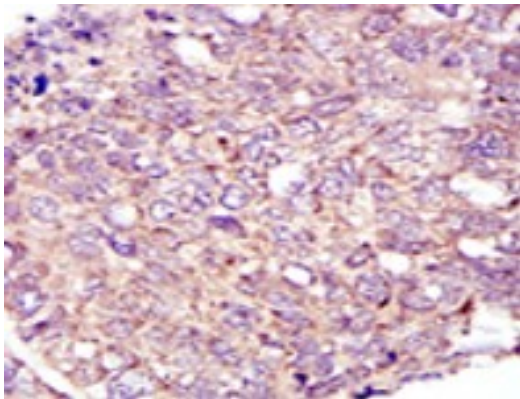
| | |
|----------------|--|
| Gene Symbol | HIF1A |
| Gene Full Name | Hypoxia Inducible Factor 1 Subunit Alpha |
| Calculated Mw | 93 kDa |

Images



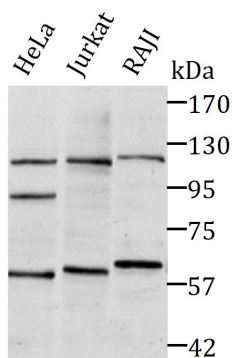
ARG67073 anti-HIF-1 alpha antibody ICC/IF image

Immunofluorescence: HeLa cells stained with ARG67073 anti-HIF-1 alpha antibody.



ARG67073 anti-HIF-1 alpha antibody IHC-P image

Immunohistochemistry: Human lung cancer tissue stained with ARG67073 anti-HIF-1 alpha antibody.



ARG67073 anti-HIF-1 alpha antibody WB image

Western blot: HeLa, Jurkat and RAJI cells stained with ARG67073 anti-HIF-1 alpha antibody .