

ARG67109 anti-ILKAP antibody

Package: 100 µl
Store at: -20°C

Summary

Product Description	Rabbit Polyclonal antibody recognizes ILKAP
Tested Reactivity	Hu, Ms, Rat, Mk
Tested Application	ICC/IF, IHC-P, WB
Host	Rabbit
Clonality	Polyclonal
Isotype	IgG
Target Name	ILKAP
Species	Human
Immunogen	Human ILKAP Synthesized peptide
Conjugation	Un-conjugated
Alternate Names	ILKAP; ILK Associated Serine/Threonine Phosphatase; Integrin-Linked Kinase-Associated Serine/Threonine Phosphatase 2C; PPM1O; Protein Phosphatase, Mg ²⁺ /Mn ²⁺ Dependent 1O; DKFZP434J2031

Application Instructions

Application table	Application	Dilution
	ICC/IF	1:200-1:1000
	IHC-P	1:100-1:300
	WB	1:500-2000

Application Note * The dilutions indicate recommended starting dilutions and the optimal dilutions or concentrations should be determined by the scientist.

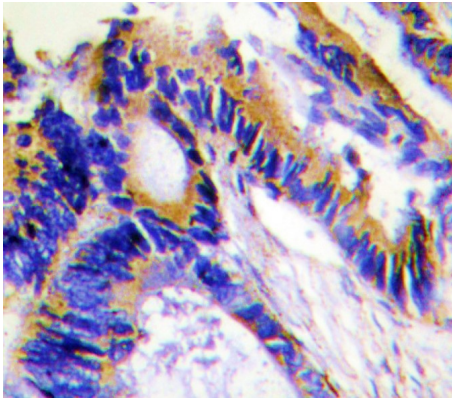
Properties

Form	Liquid
Purification	Affinity purification with immunogen.
Buffer	PBS (pH 7.4), 0.02% Sodium azide, 50% Glycerol and 0.5% BSA.
Preservative	0.02% Sodium azide
Stabilizer	50% Glycerol and 0.5% BSA
Storage instruction	For continuous use, store undiluted antibody at 2-8°C for up to a week. For long-term storage, aliquot and store at -20°C. Storage in frost free freezers is not recommended. Avoid repeated freeze/thaw cycles. Suggest spin the vial prior to opening. The antibody solution should be gently mixed before use.

Bioinformation

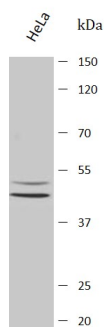
Gene Symbol	ILKAP
Gene Full Name	ILK Associated Serine/Threonine Phosphatase
Background	The protein encoded by this gene is a protein serine/threonine phosphatase of the PP2C family. This protein can interact with integrin-linked kinase (ILK/ILK1), a regulator of integrin mediated signaling, and regulate the kinase activity of ILK. Through the interaction with ILK, this protein may selectively affect the signaling process of ILK-mediated glycogen synthase kinase 3 beta (GSK3beta), and thus participate in Wnt signaling pathway.
Function	Protein phosphatase that may play a role in regulation of cell cycle progression via dephosphorylation of its substrates whose appropriate phosphorylation states might be crucial for cell proliferation. Selectively associates with integrin linked kinase (ILK), to modulate cell adhesion and growth factor signaling. Inhibits the ILK-GSK3B signaling axis and may play an important role in inhibiting oncogenic transformation.
Calculated Mw	43 kDa
Cellular Localization	Cytoplasm

Images



ARG67109 anti-ILKAP antibody IHC-P image

Immunohistochemistry: Human colon carcinoma stained with ARG67109 anti-ILKAP antibody.



ARG67109 anti-ILKAP antibody WB image

Western blot: HeLa stained with ARG67109 anti-ILKAP antibody.

ARG67109 anti-ILKAP antibody WB image

Western blot: COS7 stained with ARG67109 anti-ILKAP antibody.

