

## ARG10555 anti-B Raf (V600E) antibody [K21-F] (FITC)

Package: 50 tests  
Store at: 4°C

### Summary

Product Description	FITC-conjugated Rabbit Monoclonal antibody [K21-F] recognizes B Raf (V600E)
Tested Reactivity	Hu
Tested Application	FACS
Host	Rabbit
Clonality	Monoclonal
Clone	K21-F
Isotype	IgG
Target Name	B Raf (V600E)
Species	Human
Conjugation	FITC
Alternate Names	BRAF1; v-Raf murine sarcoma viral oncogene homolog B1; Proto-oncogene B-Raf; p94; Serine/threonine-protein kinase B-raf; RAFB1; EC 2.7.11.1; B-RAF1; NS7

### Application Instructions

Application table	Application	Dilution
	FACS	Assay-dependent
Application Note	* The dilutions indicate recommended starting dilutions and the optimal dilutions or concentrations should be determined by the scientist.	

### Properties

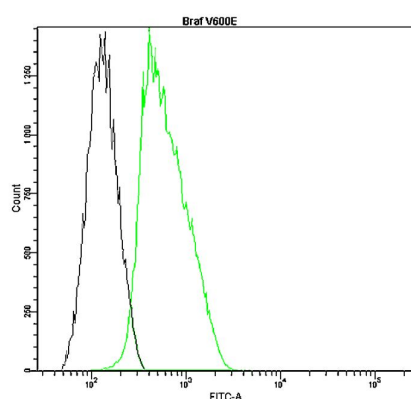
Form	Liquid
Buffer	Aqueous buffer solution, 0.05% Sodium azide and 10 mg/ml BSA
Preservative	0.05% Sodium azide
Stabilizer	10 mg/ml BSA
Storage instruction	Aliquot and store in the dark at 2-8°C. Keep protected from prolonged exposure to light. Avoid repeated freeze/thaw cycles. Suggest spin the vial prior to opening. The antibody solution should be gently mixed before use.
Note	For laboratory research only, not for drug, diagnostic or other use.

### Bioinformation

Database links	<a href="#">GeneID: 673 Human</a>
	<a href="#">Swiss-port # P15056 Human</a>

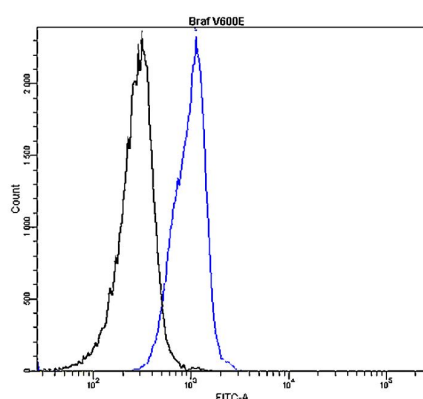
Gene Symbol	BRAF
Gene Full Name	B-Raf proto-oncogene, serine/threonine kinase
Background	This gene encodes a protein belonging to the raf/mil family of serine/threonine protein kinases. This protein plays a role in regulating the MAP kinase/ERKs signaling pathway, which affects cell division, differentiation, and secretion. Mutations in this gene are associated with cardiofaciocutaneous syndrome, a disease characterized by heart defects, mental retardation and a distinctive facial appearance. Mutations in this gene have also been associated with various cancers, including non-Hodgkin lymphoma, colorectal cancer, malignant melanoma, thyroid carcinoma, non-small cell lung carcinoma, and adenocarcinoma of lung. A pseudogene, which is located on chromosome X, has been identified for this gene. [provided by RefSeq, Jul 2008]
Function	Protein kinase involved in the transduction of mitogenic signals from the cell membrane to the nucleus. May play a role in the postsynaptic responses of hippocampal neuron. Phosphorylates MAP2K1, and thereby contributes to the MAP kinase signal transduction pathway. [UniProt]
Calculated Mw	84 kDa
PTM	Phosphorylation at Ser-365 by SGK1 inhibits its activity. Methylation at Arg-671 decreases stability and kinase activity. Ubiquitinated by RNF149; which leads to proteasomal degradation. Polyubiquitinated at Lys-578 in response to EGF.

## Images



ARG10555 anti-B Raf (V600E) antibody [K21-F] (FITC) FACS image

Flow Cytometry: HT29 cells were fixed, permeabilized and stained with ARG10555 anti-B Raf (V600E) antibody [K21-F] (FITC) (green, 10 µl for HT29 per test) or with an isotype control (black).



ARG10555 anti-B Raf (V600E) antibody [K21-F] (FITC) FACS image

Flow Cytometry: Chronic lymphocytic leukemia cells were fixed, permeabilized and stained with ARG10555 anti-B Raf (V600E) antibody [K21-F] (FITC) (blue, 4 µl for lymphocytes per test) or with an isotype control (black).