

## ARG10565 anti-Cytokeratin 19 antibody [E16-L]

Package: 100 µl  
Store at: -20°C

### Summary

Product Description	Rabbit Monoclonal antibody [E16-L] recognizes Cytokeratin 19
Tested Reactivity	Hu
Tested Application	IHC-P
Host	Rabbit
Clonality	Monoclonal
Clone	E16-L
Isotype	IgG
Target Name	Cytokeratin 19
Species	Human
Immunogen	Synthetic peptide around the C-terminus of Human cytokeratin 19
Conjugation	Un-conjugated
Alternate Names	Cytokeratin-19; K19; CK-19; K1CS; Keratin-19; CK19; Keratin, type I cytoskeletal 19

### Application Instructions

Application table	Application	Dilution
	IHC-P	1:100 - 1:200
Application Note	* The dilutions indicate recommended starting dilutions and the optimal dilutions or concentrations should be determined by the scientist.	

### Properties

Form	Liquid
Buffer	20 mM Tris-HCl (pH 8.0), 0.05% Sodium azide and 20 mg/ml BSA
Preservative	0.05% Sodium azide
Stabilizer	20 mg/ml BSA
Storage instruction	For continuous use, store undiluted antibody at 2-8°C for up to a week. For long-term storage, aliquot and store at -20°C or below. Storage in frost free freezers is not recommended. Avoid repeated freeze/thaw cycles. Suggest spin the vial prior to opening. The antibody solution should be gently mixed before use.
Note	For laboratory research only, not for drug, diagnostic or other use.

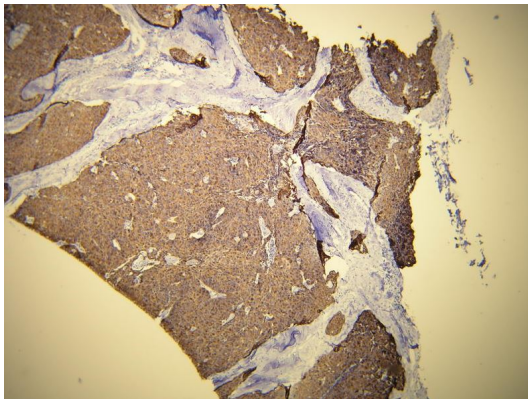
### Bioinformation

Database links	<a href="#">GeneID: 3880 Human</a>
----------------	------------------------------------

Gene Symbol	KRT19
Gene Full Name	keratin 19, type I
Background	Cytokeratin 19 is a member of the keratin family. The keratins are intermediate filament proteins responsible for the structural integrity of epithelial cells and are subdivided into cytokeratins and hair keratins. The type I cytokeratins consist of acidic proteins which are arranged in pairs of heterotypic keratin chains. Unlike its related family members, this smallest known acidic cytokeratin is not paired with a basic cytokeratin in epithelial cells. It is specifically expressed in the periderm, the transiently superficial layer that envelopes the developing epidermis. The type I cytokeratins are clustered in a region of chromosome 17q12-q21. [provided by RefSeq, Jul 2008]
Function	Cytokeratin 19 involved in the organization of myofibers. Together with KRT8, helps to link the contractile apparatus to dystrophin at the costameres of striated muscle. [UniProt]
Highlight	Related products: <a href="#">Cytokeratin 19 antibodies</a> ; <a href="#">Anti-Rabbit IgG secondary antibodies</a> ; Related news: <a href="#">Therapeutic strategies against PDAC</a>
Calculated Mw	44 kDa

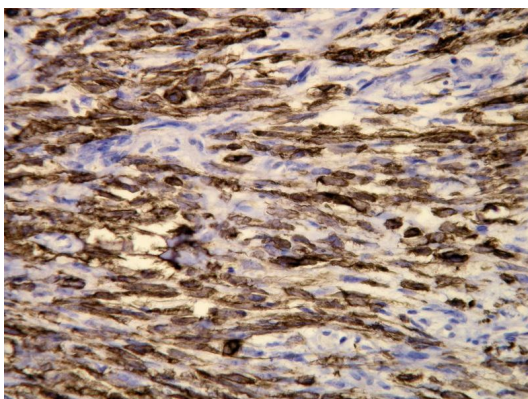
## Images

---



ARG10565 anti-Cytokeratin 19 antibody [E16-L] IHC-P image

Immunohistochemistry: Formalin fixed, paraffin embedded Human epithelial thymoma tissue (4 µm section) stained with ARG10565 anti-Cytokeratin 19 antibody [E16-L].



ARG10565 anti-Cytokeratin 19 antibody [E16-L] IHC-P image

Immunohistochemistry: Formalin fixed, paraffin embedded Human monophasic spindle cell synovial sarcoma tissue (4 µm section) stained with ARG10565 anti-Cytokeratin 19 antibody [E16-L].