

ARG10566 anti-EBV LMP1 antibody [D24-G]

Package: 100 µl
Store at: -20°C

Summary

Product Description	Rabbit Monoclonal antibody [D24-G] recognizes EBV LMP1
Tested Reactivity	EBV
Tested Application	IHC-P
Host	Rabbit
Clonality	Monoclonal
Clone	D24-G
Isotype	IgG
Target Name	EBV LMP1
Species	Virus
Immunogen	Synthetic peptide around the internal region of EBV's Latent Membrane Protein-1
Conjugation	Un-conjugated

Application Instructions

Application table	Application	Dilution
	IHC-P	1:100 - 1:200
Application Note	* The dilutions indicate recommended starting dilutions and the optimal dilutions or concentrations should be determined by the scientist.	

Properties

Form	Liquid
Buffer	20 mM Tris-HCl (pH 8.0), 0.05% Sodium azide and 20 mg/ml BSA
Preservative	0.05% Sodium azide
Stabilizer	20 mg/ml BSA
Storage instruction	For continuous use, store undiluted antibody at 2-8°C for up to a week. For long-term storage, aliquot and store at -20°C or below. Storage in frost free freezers is not recommended. Avoid repeated freeze/thaw cycles. Suggest spin the vial prior to opening. The antibody solution should be gently mixed before use.
Note	For laboratory research only, not for drug, diagnostic or other use.

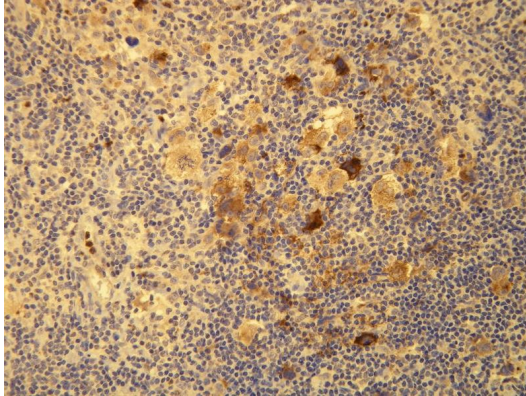
Bioinformation

Gene Symbol	LMP1
Gene Full Name	LMP1

Function

Acts as a CD40 functional homolog to prevent apoptosis of infected B-lymphocytes and drive their proliferation. Functions as a constitutively active tumor necrosis factor receptor that induces the activation of several signaling pathways, including those of the NF-kappa-B family. LMP1 signaling leads to up-regulation of antiapoptotic proteins and provide growth signals in latently infected cells. Interacts with host UBE2I and subsequently affects the sumoylation state of several cellular proteins. For example, induces the sumoylation of host IRF7 thereby limiting its transcriptional activity and modulating the activation of innate immune responses. [UniProt]

Images



ARG10566 anti-EBV LMP1 antibody [D24-G] IHC-P image

Immunohistochemistry: Formalin-fixed and paraffin-embedded HRS cells of the classical Hodgkin Lymphoma (4 μ m section) stained with ARG10566 anti-EBV LMP1 antibody [D24-G].