

## ARG10578 anti-Metallothionein antibody [N11-G]

Package: 50 µl  
Store at: -20°C

### Summary

Product Description	Rabbit Monoclonal antibody [N11-G] recognizes Metallothionein
Tested Reactivity	Hu, Rb
Tested Application	WB
Host	Rabbit
Clonality	Monoclonal
Clone	N11-G
Isotype	IgG
Target Name	Metallothionein
Species	Human
Immunogen	Synthetic peptide around the N-terminus of Human metallothionein (covering isoforms 1A, B, E, F, G, H, I, L, M, Q, S, Y, 2A)
Conjugation	Un-conjugated
Alternate Names	Metallothionein-IA; MT-1A; Metallothionein-1A; MT1; MT1S; MTC; MT-IA

### Application Instructions

Application table	Application	Dilution
	WB	Assay-dependent
Application Note	* The dilutions indicate recommended starting dilutions and the optimal dilutions or concentrations should be determined by the scientist.	

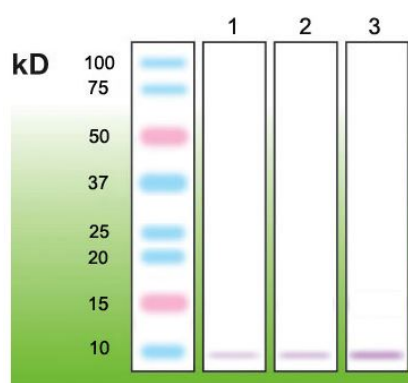
### Properties

Form	Liquid
Buffer	20 mM Tris-HCl (pH 8.0), 0.05% Sodium azide and 10 mg/ml BSA
Preservative	0.05% Sodium azide
Stabilizer	10 mg/ml BSA
Storage instruction	For continuous use, store undiluted antibody at 2-8°C for up to a week. For long-term storage, aliquot and store at -20°C or below. Storage in frost free freezers is not recommended. Avoid repeated freeze/thaw cycles. Suggest spin the vial prior to opening. The antibody solution should be gently mixed before use.
Note	For laboratory research only, not for drug, diagnostic or other use.

### Bioinformation

Database links	<a href="#">GeneID: 4489 Human</a> <a href="#">Swiss-port # P04731 Human</a>
Gene Symbol	MT1A
Gene Full Name	metallothionein 1A
Function	Metallothioneins have a high content of cysteine residues that bind various heavy metals; these proteins are transcriptionally regulated by both heavy metals and glucocorticoids. [UniProt]
Calculated Mw	6 kDa

## Images



ARG10578 anti-Metallothionein antibody [N11-G] WB image

Western blot: 1) 1  $\mu$ g, 2) 3  $\mu$ g, and 3) 5  $\mu$ g of Rabbit liver lysates stained with ARG10578 anti-Metallothionein antibody [N11-G].