

ARG10779
anti-DRD2 / Dopamine Receptor D2 antibodyPackage: 50 µg
Store at: -20°C

Summary

Product Description	Rabbit Polyclonal antibody recognizes DRD2 / Dopamine Receptor D2
Tested Reactivity	Ms, Rat
Tested Application	ELISA, ICC/IF, IHC-Fr, IP, WB
Host	Rabbit
Clonality	Polyclonal
Isotype	IgG
Target Name	DRD2 / Dopamine Receptor D2
Species	Rat
Immunogen	Synthetic peptide taken within aa. 150-200 from Rat DRD2 / Dopamine D2 receptor.
Conjugation	Un-conjugated
Alternate Names	D2R; D2DR; D(2) dopamine receptor; Dopamine D2 receptor

Application Instructions

Application table	Application	Dilution
	ELISA	1:50000
	ICC/IF	1:200
	IHC-Fr	1:200
	IP	1:200
	WB	1:1000 - 1:15000

Application Note * The dilutions indicate recommended starting dilutions and the optimal dilutions or concentrations should be determined by the scientist.

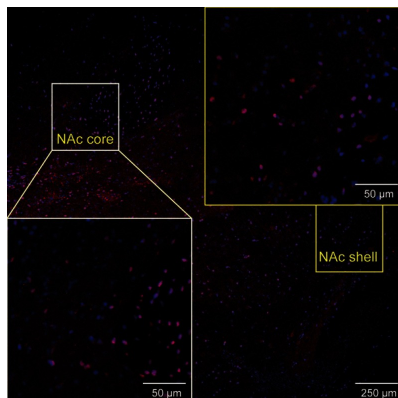
Properties

Form	Liquid
Purification	Affinity purified.
Buffer	Tris-Glycine Buffer (pH 7.4 - 7.8), Hepes, 0.02% Sodium azide, 30% Glycerol and 0.5% BSA.
Preservative	0.02% Sodium azide
Stabilizer	30% Glycerol and 0.5% BSA
Concentration	0.75 mg/ml
Storage instruction	For continuous use, store undiluted antibody at 2-8°C for up to a week. For long-term storage, aliquot and store at -20°C. Storage in frost free freezers is not recommended. Avoid repeated freeze/thaw cycles. Suggest spin the vial prior to opening. The antibody solution should be gently mixed before use.

Bioinformation

Database links	GeneID: 13489 Mouse GeneID: 24318 Rat Swiss-port # P61168 Mouse Swiss-port # P61169 Rat
Gene Symbol	Drd2
Gene Full Name	dopamine receptor D2
Background	This gene encodes the D2 subtype of the dopamine receptor. This G-protein coupled receptor inhibits adenylyl cyclase activity. A missense mutation in this gene causes myoclonus dystonia; other mutations have been associated with schizophrenia. Alternative splicing of this gene results in two transcript variants encoding different isoforms. A third variant has been described, but it has not been determined whether this form is normal or due to aberrant splicing. [provided by RefSeq, Jul 2008]
Function	Dopamine receptor whose activity is mediated by G proteins which inhibit adenylyl cyclase. [UniProt]
Calculated Mw	51 kDa

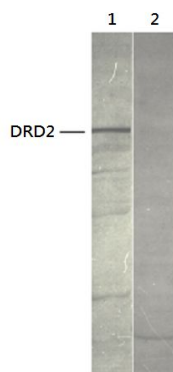
Images



ARG10779 anti-DRD2 / Dopamine Receptor D2 antibody IHC-Fr image

Immunohistochemistry: Mouse brain stained with ARG10779 anti-DRD2 / Dopamine Receptor D2 antibody.

From Nai-Li Wei et al. Neuropsychiatr Dis Treat. (2019), [doi: 10.2147/NDT.S204818](https://doi.org/10.2147/NDT.S204818), Fig. S1.



ARG10779 anti-DRD2 / Dopamine Receptor D2 antibody WB image

Western blot: 1) Recombinant Dopamine D2 receptor protein, and 2) cerebellar membranes stained with ARG10779 anti-DRD2 / Dopamine Receptor D2 antibody at 1:500 dilution.

ARG10779 anti-DRD2 / Dopamine Receptor D2 antibody WB image

Western blot: Rat striatal membranes stained with ARG10779 anti-DRD2 / Dopamine Receptor D2 antibody at 1:500 dilution.

