

## ARG10795 anti-PDEB1 antibody

Package: 50 µg  
Store at: -20°C

### Summary

Product Description	Rabbit Polyclonal antibody recognizes PDEB1
Tested Reactivity	Other
Tested Application	Dot, ELISA, IP, WB
Host	Rabbit
Clonality	Polyclonal
Isotype	IgG
Target Name	PDEB1
Immunogen	Synthetic multiple antigenic peptide taken within aa. 1-50 from Trypanosoma brucei PDEB1 protein.
Conjugation	Un-conjugated

### Application Instructions

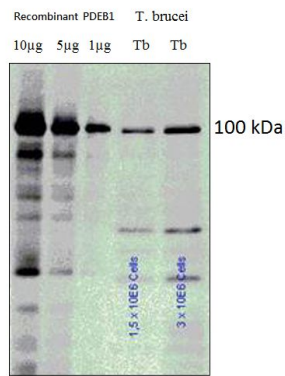
Application table	Application	Dilution
	Dot	1:10000
	ELISA	1:10000
	IP	1:250
	WB	1:250
Application Note	* The dilutions indicate recommended starting dilutions and the optimal dilutions or concentrations should be determined by the scientist.	

### Properties

Form	Liquid
Purification	Affinity purified.
Buffer	Tris-Glycine Buffer (pH 7.4 - 7.8), Hepes, 0.02% Sodium azide, 30% Glycerol and 0.5% BSA.
Preservative	0.02% Sodium azide
Stabilizer	30% Glycerol and 0.5% BSA
Concentration	0.5 mg/ml
Storage instruction	For continuous use, store undiluted antibody at 2-8°C for up to a week. For long-term storage, aliquot and store at -20°C. Storage in frost free freezers is not recommended. Avoid repeated freeze/thaw cycles. Suggest spin the vial prior to opening. The antibody solution should be gently mixed before use.
Note	For laboratory research only, not for drug, diagnostic or other use.

Calculated Mw ~ 100 kDa

Images



ARG10795 anti-PDEB1 antibody WB image

Western blot: Recombinant PDEB1 and cell extracts from T. brucei stained with ARG10795 anti-PDEB1 antibody at 1:1000 dilution.