

ARG10796 anti-PDE3A antibody

Package: 50 µg
Store at: -20°C

Summary

Product Description	Rabbit Polyclonal antibody recognizes PDE3A
Tested Reactivity	Hu, Ms, Rat, Mk, Xenopus
Tested Application	Confocal, Dot, ELISA, FRET, ICC/IF, IHC-P, IP, WB
Host	Rabbit
Clonality	Polyclonal
Isotype	IgG
Target Name	PDE3A
Species	Human
Immunogen	Synthetic peptide selective only for PDE3A variants.
Conjugation	Un-conjugated
Alternate Names	EC 3.1.4.17; Cyclic GMP-inhibited phosphodiesterase A; CGI-PDE; CGI-PDE A; CGI-PDE-A; HTNB; cGMP-inhibited 3',5'-cyclic phosphodiesterase A

Application Instructions

Application table	Application	Dilution
	Confocal	1:250
	Dot	1:10000
	ELISA	1:10000
	FRET	Assay-dependent
	ICC/IF	1:250
	IHC-P	1:250
	IP	1:200
	WB	1:500

Application Note * The dilutions indicate recommended starting dilutions and the optimal dilutions or concentrations should be determined by the scientist.

Properties

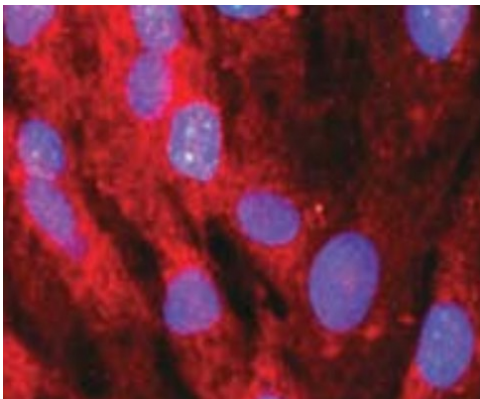
Form	Liquid
Purification	Affinity purified.
Buffer	Tris-Glycine Buffer (pH 7.4 - 7.8), Hepes, 0.02% Sodium azide, 30% Glycerol and 0.5% BSA.
Preservative	0.02% Sodium azide

Stabilizer	30% Glycerol and 0.5% BSA
Concentration	0.5 mg/ml
Storage instruction	For continuous use, store undiluted antibody at 2-8°C for up to a week. For long-term storage, aliquot and store at -20°C. Storage in frost free freezers is not recommended. Avoid repeated freeze/thaw cycles. Suggest spin the vial prior to opening. The antibody solution should be gently mixed before use.
Note	For laboratory research only, not for drug, diagnostic or other use.

Bioinformation

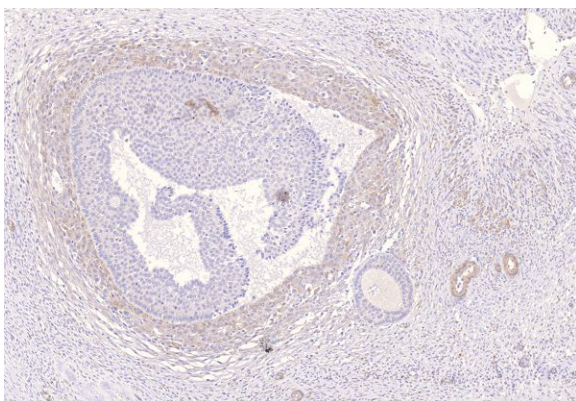
Gene Symbol	PDE3A
Gene Full Name	phosphodiesterase 3A, cGMP-inhibited
Background	This gene encodes a member of the cGMP-inhibited cyclic nucleotide phosphodiesterase (cGI-PDE) family. cGI-PDE enzymes hydrolyze both cAMP and cGMP, and play critical roles in many cellular processes by regulating the amplitude and duration of intracellular cyclic nucleotide signals. The encoded protein mediates platelet aggregation and also plays important roles in cardiovascular function by regulating vascular smooth muscle contraction and relaxation. Inhibitors of the encoded protein may be effective in treating congestive heart failure. Alternatively spliced transcript variants encoding multiple isoforms have been observed for this gene. [provided by RefSeq, Sep 2011]
Function	Cyclic nucleotide phosphodiesterase with a dual-specificity for the second messengers cAMP and cGMP, which are key regulators of many important physiological processes. [UniProt]
Calculated Mw	125 kDa

Images



ARG10796 anti-PDE3A antibody ICC/IF image

Immunofluorescence: Ice-cold Acetone/Methanol (1:1) fixed (5 min) cultured rat smooth muscle cells stained with ARG10796 anti-PDE3A antibody (red) at 1:100 dilution. Nuclei were counterstained with DAPI (blue).



ARG10796 anti-PDE3A antibody IHC-P image

Immunohistochemistry: Paraffin-embedded Human ovarian medulla tissue stained with ARG10796 anti-PDE3A antibody at 1:100 dilution.