

## ARG10821 anti-Guanylate Cyclase beta antibody

Package: 50 µg  
Store at: -20°C

### Summary

Product Description	Rabbit Polyclonal antibody recognizes Guanylate Cyclase beta
Tested Reactivity	Hu, Ms, Rat, Bov, Pig
Tested Application	Confocal, Dot, ELISA, ICC/IF, IHC-P, IP, WB
Host	Rabbit
Clonality	Polyclonal
Isotype	IgG
Target Name	Guanylate Cyclase beta
Species	Rat
Immunogen	Synthetic peptide taken within aa. 175-225 from Rat Guanylyl Cyclase beta.
Conjugation	Un-conjugated
Alternate Names	GC-S-beta-1; GUC1B3; GUCSB3; Soluble guanylate cyclase small subunit; GCS-beta-1; GUCY1B1; GCS-beta-3; GUCB3; EC 4.6.1.2; Guanylate cyclase soluble subunit beta-3; GC-SB3; Guanylate cyclase soluble subunit beta-1

### Application Instructions

Application table	Application	Dilution
	Confocal	1:100
	Dot	1:10000
	ELISA	1:10000
	ICC/IF	1:100
	IHC-P	1:100
	IP	1:200
	WB	1:500
	Application Note	* The dilutions indicate recommended starting dilutions and the optimal dilutions or concentrations should be determined by the scientist.

### Properties

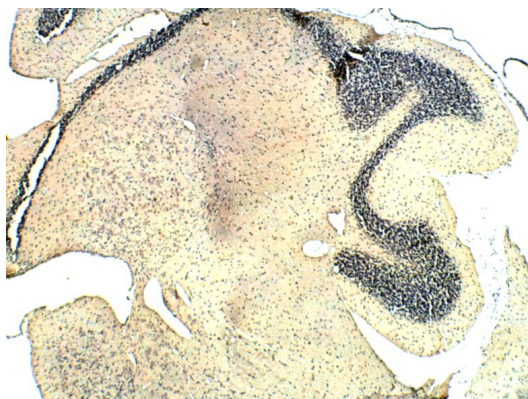
Form	Liquid
Purification	Affinity purified.
Buffer	Tris-Glycine Buffer (pH 7.4 - 7.8), Hepes, 0.02% Sodium azide, 30% Glycerol and 0.5% BSA.
Preservative	0.02% Sodium azide

Stabilizer	30% Glycerol and 0.5% BSA
Concentration	0.5 mg/ml
Storage instruction	For continuous use, store undiluted antibody at 2-8°C for up to a week. For long-term storage, aliquot and store at -20°C. Storage in frost free freezers is not recommended. Avoid repeated freeze/thaw cycles. Suggest spin the vial prior to opening. The antibody solution should be gently mixed before use.
Note	For laboratory research only, not for drug, diagnostic or other use.

## Bioinformation

Gene Symbol	Gucy1b3
Gene Full Name	guanylate cyclase 1, soluble, beta 3
Background	This gene encodes the beta subunit of the soluble guanylate cyclase (sGC), which catalyzes the conversion of GTP (guanosine triphosphate) to cGMP (cyclic guanosine monophosphate). The encoded protein contains an HNOX domain, which serves as a receptor for ligands such as nitric oxide, oxygen and nitrovasodilator drugs. Alternative splicing results in multiple transcript variants. [provided by RefSeq, May 2014]
Calculated Mw	71 kDa

## Images



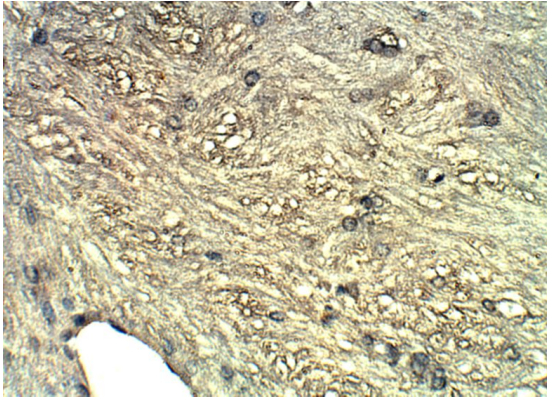
ARG10821 anti-Guanylate Cyclase beta antibody IHC-P image

Immunohistochemistry: Formalin-fixed and paraffin-embedded Rat cerebellum tissue stained with ARG10821 anti-Guanylate Cyclase beta antibody at 1:100 dilution.



ARG10821 anti-Guanylate Cyclase beta antibody WB image

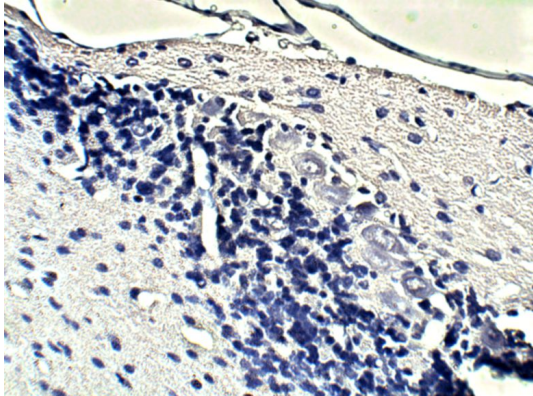
Western blot: Recombinant Guanylyl Cyclase beta protein stained with ARG10821 anti-Guanylate Cyclase beta antibody at 1:500 dilution.



ARG10821 anti-Guanylate Cyclase beta antibody IHC-P image

Immunohistochemistry: Formalin-fixed and paraffin-embedded Rat cerebellum tissue stained with ARG10821 anti-Guanylate Cyclase beta antibody at 1:100 dilution.

---



ARG10821 anti-Guanylate Cyclase beta antibody IHC-P image

Immunohistochemistry: Formalin-fixed and paraffin-embedded Rat cerebellum tissue stained with ARG10821 anti-Guanylate Cyclase beta antibody at 1:100 dilution.

---