

ARG10900 anti-BarX2 antibody [BAR X2 8A7/1]

Package: 100 µg
Store at: -20°C

Summary

Product Description	Mouse Monoclonal antibody [BAR X2 8A7/1] recognizes BarX2
Tested Reactivity	Hu
Tested Application	ChIP, ELISA, ICC/IF, IHC-P, WB
Host	Mouse
Clonality	Monoclonal
Clone	BAR X2 8A7/1
Isotype	IgG1
Target Name	BarX2
Species	Human
Immunogen	MBP-tagged BarX2
Conjugation	Un-conjugated
Alternate Names	Homeobox protein BarH-like 2

Application Instructions

Application table	Application	Dilution
	ChIP	Assay-dependent
	ELISA	Assay-dependent
	ICC/IF	Assay-dependent
	IHC-P	Assay-dependent
	WB	Assay-dependent
Application Note	* The dilutions indicate recommended starting dilutions and the optimal dilutions or concentrations should be determined by the scientist.	

Properties

Form	Liquid
Purification	Purified by affinity chromatography.
Buffer	PBS and 0.02% Sodium azide.
Preservative	0.02% Sodium azide
Concentration	1 mg/ml
Storage instruction	For continuous use, store undiluted antibody at 2-8°C for up to a week. For long-term storage, aliquot and store at -20°C or below. Storage in frost free freezers is not recommended. Avoid repeated freeze/thaw cycles. Suggest spin the vial prior to opening. The antibody solution should be gently mixed

before use.

Note

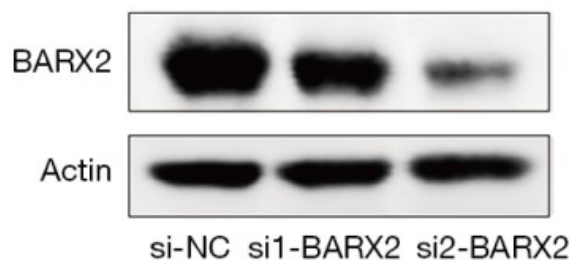
For laboratory research only, not for drug, diagnostic or other use.

Bioinformation

Gene Symbol	BARX2
Gene Full Name	BARX homeobox 2
Background	This gene encodes a member of the homeobox transcription factor family. A highly related protein in mouse has been shown to influence cellular processes that control cell adhesion and remodeling of the actin cytoskeleton in myoblast fusion and chondrogenesis. The encoded protein may also play a role in cancer progression. [provided by RefSeq, Jul 2008]
Function	Transcription factor. Binds optimally to the DNA consensus sequence 5'-YYTAATGRTTTTY-3'. May control the expression of neural adhesion molecules such as L1 or Ng-CAM during embryonic development of both the central and peripheral nervous system. May be involved in controlling adhesive processes in keratinizing epithelia (By similarity). [UniProt]
Calculated Mw	31 kDa

Images

B

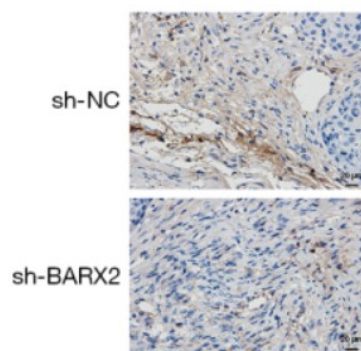


ARG10900 anti-BarX2 antibody [BAR X2 8A7/1] WB image

Western blot: LUAD cells stained with ARG10900 anti-BarX2 antibody [BAR X2 8A7/1] at 1:1000 dilution.

From Kai Xie et al. Transl Lung Cancer Res. (2022), [doi: 10.21037/tlcr-22-465](https://doi.org/10.21037/tlcr-22-465), Fig. 2B.

L



ARG10900 anti-BarX2 antibody [BAR X2 8A7/1] IHC-P image

Immunohistochemistry: Mouse tumor nodules stained with ARG10900 anti-BarX2 antibody [BAR X2 8A7/1] at 1:1000 dilution.

From Kai Xie et al. Transl Lung Cancer Res. (2022), [doi: 10.21037/tlcr-22-465](https://doi.org/10.21037/tlcr-22-465), Fig. 2L.