

**ARG11048**  
**anti-PTMA antibody [1F2]**

Package: 100 µg

Store at: -20°C

### Summary

Product Description	Mouse Monoclonal antibody [1F2] recognizes PTMA
Tested Reactivity	Hu
Tested Application	WB
Specificity	This antibody is reactive to PTMA peptide (EEAENGRDAPANGNAN) and GST-tagged recombinant PTMA protein.
Host	Mouse
Clonality	Monoclonal
Clone	1F2
Isotype	IgG1, kappa
Target Name	PTMA
Species	Human
Immunogen	KLH-conjugated synthetic peptide of PTMA. (EEAENGRDAPANGNAN)
Conjugation	Un-conjugated
Alternate Names	Prothymosin alpha; TMSA

### Application Instructions

Application table	Application	Dilution
	WB	1 µg/ml
Application Note	* The dilutions indicate recommended starting dilutions and the optimal dilutions or concentrations should be determined by the scientist.	

### Properties

Form	Liquid
Purification	Purification with Protein G.
Buffer	PBS (pH 7.0)
Storage instruction	For continuous use, store undiluted antibody at 2-8°C for up to a week. For long-term storage, aliquot and store at -20°C or below. Storage in frost free freezers is not recommended. Avoid repeated freeze/thaw cycles. Suggest spin the vial prior to opening. The antibody solution should be gently mixed before use.
Note	For laboratory research only, not for drug, diagnostic or other use.

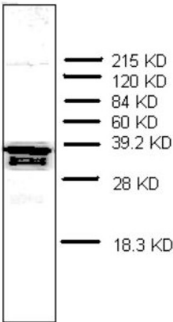
### Bioinformation

Gene Symbol	PTMA
Gene Full Name	prothymosin, alpha
Function	Prothymosin alpha may mediate immune function by conferring resistance to certain opportunistic infections. [UniProt]
Calculated Mw	12 kDa
PTM	Covalently linked to a small RNA of about 20 nucleotides. [UniProt]

Images

---

GST-tagged recombinant PTMA



ARG11048 anti-PTMA antibody [1F2] WB image

Western blot: 200 ng of GST-tagged recombinant PTMA stained with ARG11048 anti-PTMA antibody [1F2] at 1 µg/ml dilution.