

ARG11062 anti-AIF1 / Iba 1 antibody

Package: 100 µl
Store at: -20°C

Summary

Product Description	Rabbit Polyclonal antibody recognizes AIF1 / Iba 1
Tested Reactivity	Hu, Ms, Rat
Tested Application	ICC/IF, IHC-Fr, WB
Host	Rabbit
Clonality	Polyclonal
Isotype	IgG
Target Name	AIF1 / Iba 1
Species	Human
Immunogen	KLH-conjugated synthetic peptide around the C-terminal region of Human AIF1 / Iba1.
Conjugation	Un-conjugated
Alternate Names	Ionized calcium-binding adapter molecule 1; Allograft inflammatory factor 1; IBA1; IRT-1; IRT1; AIF-1; Protein G1

Application Instructions

Application table	Application	Dilution
	ICC/IF	1:2000 - 1:5000
	IHC-Fr	1:2000 - 1:5000
	WB	1:1000 - 1:5000
Application Note	* The dilutions indicate recommended starting dilutions and the optimal dilutions or concentrations should be determined by the scientist.	
Observed Size	17 kDa	

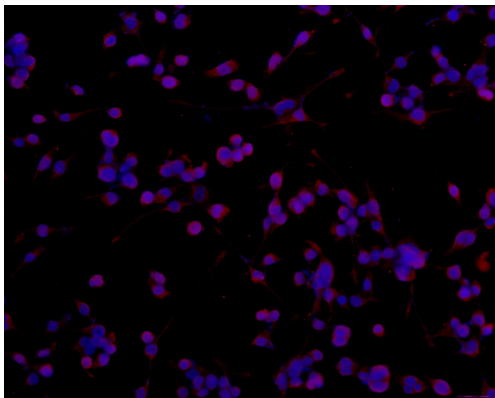
Properties

Form	Liquid
Purification	Unpurified
Buffer	Serum and 5mM Sodium azide.
Preservative	5mM Sodium azide
Storage instruction	For continuous use, store undiluted antibody at 2-8°C for up to a week. For long-term storage, aliquot and store at -20°C or below. Storage in frost free freezers is not recommended. Avoid repeated freeze/thaw cycles. Suggest spin the vial prior to opening. The antibody solution should be gently mixed before use.
Note	For laboratory research only, not for drug, diagnostic or other use.

Bioinformation

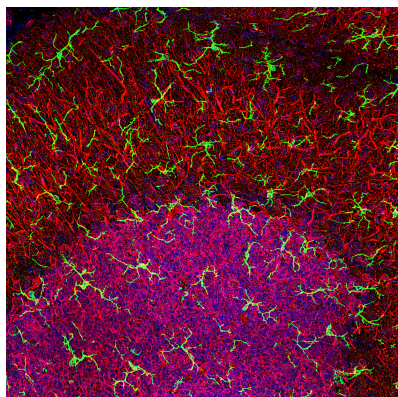
Gene Symbol	AIF1
Gene Full Name	allograft inflammatory factor 1
Background	AIF1 / Iba 1 is a protein that binds actin and calcium. This gene is induced by cytokines and interferon and may promote macrophage activation and growth of vascular smooth muscle cells and T-lymphocytes. Polymorphisms in this gene may be associated with systemic sclerosis. Alternative splicing results in multiple transcript variants, but the full-length and coding nature of some of these variants is not certain. [provided by RefSeq, Jan 2016]
Function	AIF1 / Iba 1 is an Actin-binding protein. It enhances membrane ruffling and RAC activation. Enhances the actin-bundling activity of LCP1. Binds calcium. Plays a role in RAC signaling and in phagocytosis. May play a role in macrophage activation and function. Promotes the proliferation of vascular smooth muscle cells and of T-lymphocytes. Enhances lymphocyte migration. Plays a role in vascular inflammation. [UniProt]
Highlight	Related Antibody Duos and Panels: ARG30324 Neuroinflammation Antibody Panel Related products: AIF1 antibodies ; AIF1 Duos / Panels ; Anti-Rabbit IgG secondary antibodies ;
Research Area	Cell Biology and Cellular Response antibody; Immune System antibody; Metabolism antibody; Neuroscience antibody; Activated Macrophage/Microglia Study antibody; Neuroinflammation Study antibody; Macroglial Marker antibody
Calculated Mw	17 kDa
PTM	Phosphorylated on serine residues. [UniProt]

Images



ARG11062 anti-AIF1 / Iba 1 antibody ICC/IF image (Customer's Feedback)

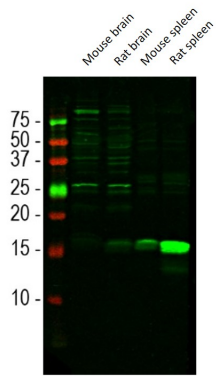
Immunofluorescence: BV-2 stained with ARG11062 anti-AIF1 / Iba 1 antibody at 1:100 dilution.



ARG11062 anti-AIF1 / Iba 1 antibody IHC-Fr image

Immunohistochemistry: High magnification stacked confocal image of Rat cerebellar molecular layer at top and granular layer below, stained with ARG11062 anti-AIF1 / Iba 1 antibody (green) at 1:1000 dilution. Nuclear DNA is shown with DAPI stain in blue.

Microglia are very small cells with fine processes spreading in three dimensions and so are best visualized in a confocal Z stack. Red shows the processes of Purkinje cells and the perikarya of granule cells revealed by an antibody to MAP2, at 1:5000 dilution.



ARG11062 anti-AIF1 / Iba 1 antibody WB image

Western blot: Mouse brain, Rat brain, Mouse spleen, and Rat spleen lysates stained with ARG11062 anti-AIF1 / Iba 1 antibody at 1:1000 dilution.

Iba1 is a relatively minor protein of brain and is much more abundant in spleen, so the 15 kDa band is less obvious in CNS lysates. The other bands seen in the CNS lysates are of unknown origin but do not appear to compromise the microglial specific staining seen with this antibody.