

## ARG11086 anti-AKAP12 / Gravin antibody

Package: 125 µg  
Store at: -20°C

### Summary

Product Description	Sheep Polyclonal antibody recognizes AKAP12 / Gravin
Tested Reactivity	Rat
Tested Application	IHC-P, IP, WB
Host	Sheep
Clonality	Polyclonal
Isotype	IgG
Target Name	AKAP12 / Gravin
Species	Rat
Immunogen	Recombinant protein corresponding to aa. 620-1596 of Rat AKAP12 / Gravin.
Conjugation	Un-conjugated
Alternate Names	SSeCKS; AKAP250; A-kinase anchor protein 250 kDa; Gravin; A-kinase anchor protein 12; Myasthenia gravis autoantigen; AKAP 250; AKAP-12

### Application Instructions

Application table	Application	Dilution
	IHC-P	Assay-dependent
	IP	Assay-dependent
	WB	2 - 5 µg/ml
Application Note	* The dilutions indicate recommended starting dilutions and the optimal dilutions or concentrations should be determined by the scientist.	
Positive Control	Rat aortic smooth muscle	

### Properties

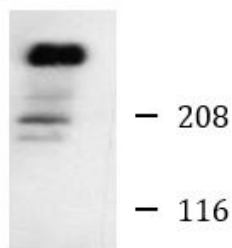
Form	Liquid
Purification	Ammonium sulfate precipitation.
Buffer	PBS and 0.08% Sodium azide.
Preservative	0.08% Sodium azide
Storage instruction	For continuous use, store undiluted antibody at 2-8°C for up to a week. For long-term storage, aliquot and store at -20°C or below. Storage in frost free freezers is not recommended. Avoid repeated freeze/thaw cycles. Suggest spin the vial prior to opening. The antibody solution should be gently mixed before use.
Note	For laboratory research only, not for drug, diagnostic or other use.

## Bioinformation

Gene Symbol	AKAP12
Gene Full Name	A kinase (PRKA) anchor protein 12
Background	The A-kinase anchor proteins (AKAPs) are a group of structurally diverse proteins, which have the common function of binding to the regulatory subunit of protein kinase A (PKA) and confining the holoenzyme to discrete locations within the cell. This gene encodes a member of the AKAP family. The encoded protein is expressed in endothelial cells, cultured fibroblasts, and osteosarcoma cells. It associates with protein kinases A and C and phosphatase, and serves as a scaffold protein in signal transduction. This protein and RII PKA colocalize at the cell periphery. This protein is a cell growth-related protein. Antibodies to this protein can be produced by patients with myasthenia gravis. Alternative splicing of this gene results in two transcript variants encoding different isoforms. [provided by RefSeq, Jul 2008]
Function	Anchoring protein that mediates the subcellular compartmentation of protein kinase A (PKA) and protein kinase C (PKC). [UniProt]
Calculated Mw	181 kDa (Rat)
Cellular Localization	Cytoplasm, cell cortex. Cytoplasm, cytoskeleton. Membrane; Lipid-anchor. Note=May be part of the cortical cytoskeleton. [UniProt]

## Images

ARG11086 anti-AKAP12 / Gravin antibody WB image



Western blot: Cultured Rat aortic smooth muscle cell lysate stained with ARG11086 anti-AKAP12 / Gravin antibody.

Rat aortic smooth muscle