

## ARG11131 anti-Peripherin antibody [8G2]

Package: 50 µl  
Store at: -20°C

### Summary

Product Description	Mouse Monoclonal antibody [8G2] recognizes Peripherin
Tested Reactivity	Hu, Ms, Rat, Cow, Pig
Tested Application	ICC/IF, IHC-Fr, WB
Host	Mouse
Clonality	Monoclonal
Clone	8G2
Isotype	IgG1
Target Name	Peripherin
Species	Rat
Immunogen	Recombinant Rat Peripherin.
Conjugation	Un-conjugated
Alternate Names	Peripherin; NEF4; PRPH1; Neurofilament 4

### Application Instructions

Application table	Application	Dilution
	ICC/IF	1:500
	IHC-Fr	1:500
	WB	1:500 - 1:1000
Application Note	* The dilutions indicate recommended starting dilutions and the optimal dilutions or concentrations should be determined by the scientist.	
Observed Size	~ 54 kDa	

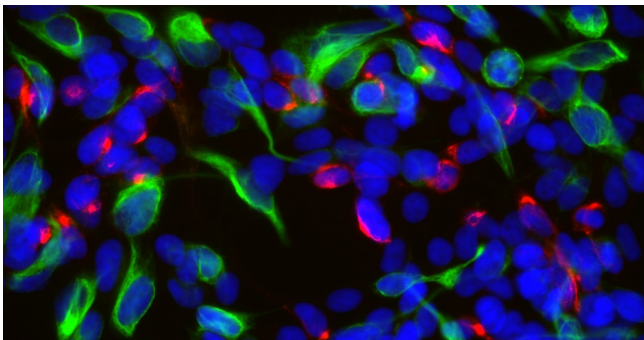
### Properties

Form	Liquid
Purification	Purified
Buffer	PBS, 5 mM Sodium azide and 50% Glycerol.
Preservative	5 mM Sodium azide
Stabilizer	50% Glycerol
Concentration	1 mg/ml
Storage instruction	For continuous use, store undiluted antibody at 2-8°C for up to a week. For long-term storage, aliquot and store at -20°C. Storage in frost free freezers is not recommended. Avoid repeated freeze/thaw cycles. Suggest spin the vial prior to opening. The antibody solution should be gently mixed before use.

Bioinformation

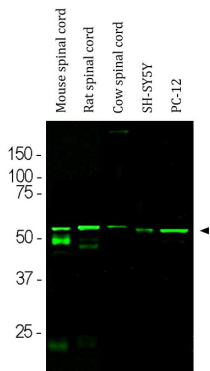
Gene Symbol	PRPH
Gene Full Name	peripherin
Background	This gene encodes a cytoskeletal protein found in neurons of the peripheral nervous system. The encoded protein is a type III intermediate filament protein with homology to other cytoskeletal proteins such as desmin, and is a different protein that the peripherin found in photoreceptors. Mutations in this gene have been associated with susceptibility to amyotrophic lateral sclerosis. [provided by RefSeq, Jul 2008]
Function	Class-III neuronal intermediate filament protein. [UniProt]
Calculated Mw	54 kDa

Images



ARG11131 anti-Peripherin antibody [8G2] ICC/IF image

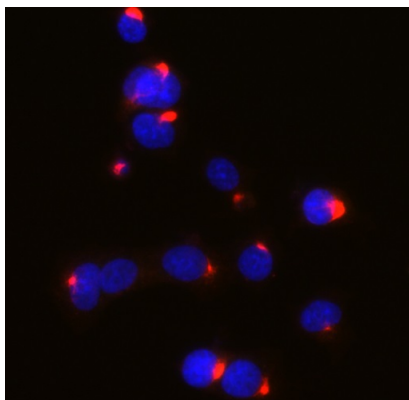
Immunofluorescence: SH-SY5Y cells stained with ARG11131 anti-Peripherin antibody [8G2] (red) at 1:500 dilution, and co-stained with anti-Vimentin antibody (green) at 1:10000 dilution. DAPI (blue) for nuclear staining.



ARG11131 anti-Peripherin antibody [8G2] WB image

Western blot: Mouse spinal cord, Rat spinal cord, Cow spinal cord, SH-SY5Y and PC-12 cell lysates stained with ARG11131 anti-Peripherin antibody [8G2] at 1:500 dilution.

The band at ~ 57 kDa corresponds to the peripherin protein. Bands at 50 and 25 kDa detected in the mouse spinal cord lysate, correspond to the heavy and light chains of mouse IgG.



#### ARG11131 anti-Peripherin antibody [8G2] ICC/IF image

Immunofluorescence: PC-12 cells stained with ARG11131 anti-Peripherin antibody [8G2] (red) at 1:500 dilution, and co-stained with anti-Vimentin antibody (green) at 1:10000 dilution. DAPI (blue) for nuclear staining.