

ARG11141
anti-Lys20p + Lys21p antibody [31F5]

Package: 100 µl

Store at: -20°C

Summary

Product Description	Mouse Monoclonal antibody [31F5] recognizes Lys20p + Lys21p
Tested Reactivity	<i>S. cerevisiae</i>
Tested Application	ICC/IF, IHC-Fr, WB
Host	Mouse
Clonality	Monoclonal
Clone	31F5
Isotype	IgG1
Target Name	Lys20p + Lys21p
Species	Yeast
Immunogen	Yeast nuclear preparation.
Conjugation	Un-conjugated

Application Instructions

Application table	Application	Dilution
	ICC/IF	1:1000 - 1:10000
	IHC-Fr	1:1000 - 1:10000
	WB	1:10000 - 1:50000
Application Note	* The dilutions indicate recommended starting dilutions and the optimal dilutions or concentrations should be determined by the scientist.	

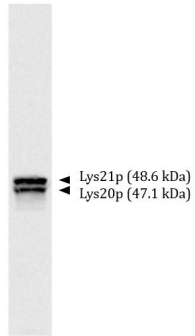
Properties

Form	Liquid
Buffer	Concentrated hybridoma tissue culture media and 5 mM Sodium azide.
Preservative	5 mM Sodium azide
Storage instruction	For continuous use, store undiluted antibody at 2-8°C for up to a week. For long-term storage, aliquot and store at -20°C or below. Storage in frost free freezers is not recommended. Avoid repeated freeze/thaw cycles. Suggest spin the vial prior to opening. The antibody solution should be gently mixed before use.
Note	For laboratory research only, not for drug, diagnostic or other use.

Bioinformation

Calculated Mw	Lys21p: 48.6 kDa
---------------	------------------

Images



Whole yeast protein extracts

ARG11141 anti-Lys20p + Lys21p antibody [31F5] WB image

Western blot: Whole yeast protein extracts stained with ARG11141 anti-Lys20p + Lys21p antibody [31F5].