

## ARG11154 anti-SARS-CoV / SARS-CoV-2 Spike protein (RBD) antibody

Package: 50 µl  
Store at: -20°C

### Summary

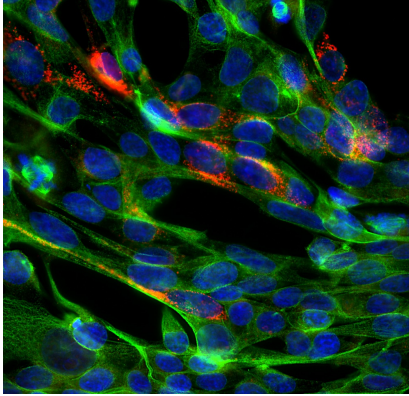
Product Description	Rabbit Polyclonal antibody recognizes SARS-CoV / SARS-CoV-2 Spike protein (RBD)
Tested Reactivity	Virus
Tested Application	ICC/IF, WB
Host	Rabbit
Clonality	Polyclonal
Isotype	IgG
Target Name	SARS-CoV / SARS-CoV-2 Spike protein (RBD)
Species	Virus
Immunogen	Recombinant SARS-CoV-2 Spike protein ACE2 binding domain (aa. 308-541 in the Spike protein sequence in Wuhan-Hu-1).
Conjugation	Un-conjugated

### Application Instructions

Application table	Application	Dilution
	ICC/IF	1:3000 - 1:5000
	WB	1:3000 - 1:5000
Application Note	* The dilutions indicate recommended starting dilutions and the optimal dilutions or concentrations should be determined by the scientist.	

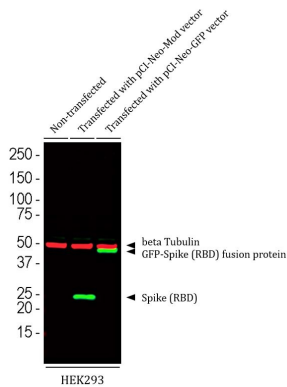
### Properties

Form	Liquid
Purification	Purified
Buffer	PBS, 5 mM Sodium azide and 50% Glycerol.
Preservative	5 mM Sodium azide
Stabilizer	50% Glycerol
Concentration	1 mg/ml
Storage instruction	For continuous use, store undiluted antibody at 2-8°C for up to a week. For long-term storage, aliquot and store at -20°C. Storage in frost free freezers is not recommended. Avoid repeated freeze/thaw cycles. Suggest spin the vial prior to opening. The antibody solution should be gently mixed before use.
Note	For laboratory research only, not for drug, diagnostic or other use.



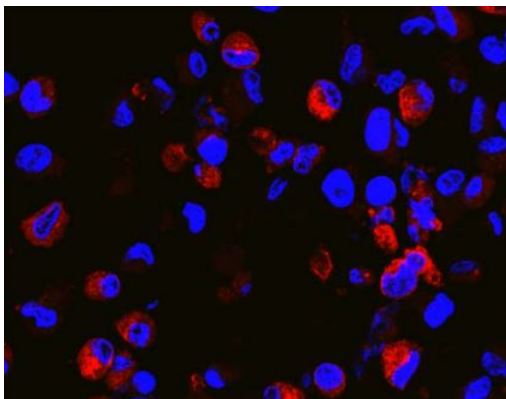
ARG11154 anti-SARS-CoV / SARS-CoV-2 Spike protein (RBD) antibody ICC/IF image

Immunofluorescence: HEK293 cells transfected with pCI-Neo-Mod vector including DNA encoding the SARS-CoV-2 Spike protein ACE2 binding domain (aa. 308-541 in the Spike protein sequence in Wuhan-Hu-1). This region was used as the immunogen for development of ARG11154 anti-SARS-CoV / SARS-CoV-2 Spike protein (RBD) antibody. HEK293 cells stained with ARG11154 (red) at 1:3000 dilution, and co-stained with anti-beta Tubulin antibody (green) at 1:5000 dilution. Hoechst (blue) for nuclear staining.



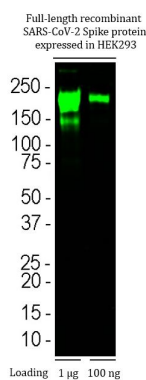
ARG11154 anti-SARS-CoV / SARS-CoV-2 Spike protein (RBD) antibody WB image

Western blot: 1) Non-transfected HEK293 cells, 2) HEK293 cells transfected with pCI-Neo-Mod vector containing the SARS-CoV-2 Spike protein ACE2 binding domain cDNA, and 3) HEK293 cells transfected with pCI-Neo-GFP vector containing the SARS-CoV-2 Spike protein ACE2 binding domain cDNA. Cell lysates were stained with ARG11154 anti-SARS-CoV / SARS-CoV-2 Spike protein (RBD) antibody (green) at 1:2000 dilution. The same blot was simultaneously stained with anti-beta Tubulin antibody (red) at 1:5000 dilution.



ARG11154 anti-SARS-CoV / SARS-CoV-2 Spike protein (RBD) antibody ICC/IF image

Immunofluorescence: Vero cells infected with SARS-CoV-2 virus. Cells were stained with ARG11154 anti-SARS-CoV / SARS-CoV-2 Spike protein (RBD) antibody (red). DAPI (blue) for nuclear staining.



ARG11154 anti-SARS-CoV / SARS-CoV-2 Spike protein (RBD) antibody WB image

Western blot: Full-length recombinant SARS-CoV-2 Spike protein expressed in HEK293 cells. Loading of 1 µg (left) or 100 ng (right). The blots were stained with ARG11154 anti-SARS-CoV / SARS-CoV-2 Spike protein (RBD) antibody.