

ARG20520
anti-CaMKII phospho (Thr286) antibody [22B1]Package: 50 µg
Store at: -20°C

Summary

| | |
|---------------------|---|
| Product Description | Mouse Monoclonal antibody [22B1] recognizes CaMKII phospho (Thr286) |
| Tested Reactivity | Hu, Ms, Rat |
| Tested Application | ELISA, ICC/IF, IHC-P, IP, WB |
| Specificity | Detects phosphorylated CaMKII from rat tissues. Monoclonal antibody 22B1 (anti-phosphoCaMKII) is specific for α and β subunits of CaMKII only when they are phosphorylated at Thr-286/287 (in β). |
| Host | Mouse |
| Clonality | Monoclonal |
| Clone | 22B1 |
| Isotype | IgG |
| Target Name | CaMKII |
| Species | Rat |
| Immunogen | Phosphospecific peptide around Thr286 of Rat CaMKII (NP_037052.1). |
| Conjugation | Un-conjugated |
| Alternate Names | CAMKA; CaMK-II subunit alpha; Calcium/calmodulin-dependent protein kinase type II subunit alpha; CaM kinase II subunit alpha; EC 2.7.11.17 |

Application Instructions

| Application table | Application | Dilution |
|-------------------|--|-----------------|
| | ELISA | Assay-dependent |
| | ICC/IF | 1:1000 |
| | IHC-P | Assay-dependent |
| | IP | Assay-dependent |
| | WB | 1:1000 |
| Application Note | * The dilutions indicate recommended starting dilutions and the optimal dilutions or concentrations should be determined by the scientist. | |
| Positive Control | Rat brain tissue extract. | |
| Observed Size | ~50 kDa | |

Properties

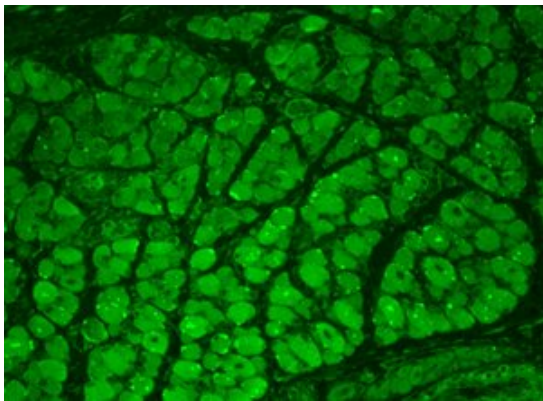
| | |
|--------------|-----------------------------|
| Form | Liquid |
| Purification | Protein G affinity purified |

| | |
|---------------------|---|
| Buffer | PBS (pH 7.4), 0.09% Sodium azide and 50% Glycerol |
| Preservative | 0.09% Sodium azide |
| Stabilizer | 50% Glycerol |
| Concentration | 1 mg/ml |
| Storage instruction | For continuous use, store undiluted antibody at 2-8°C for up to a week. For long-term storage, aliquot and store at -20°C. Storage in frost free freezers is not recommended. Avoid repeated freeze/thaw cycles. Suggest spin the vial prior to opening. The antibody solution should be gently mixed before use. |
| Note | For laboratory research only, not for drug, diagnostic or other use. |

Bioinformation

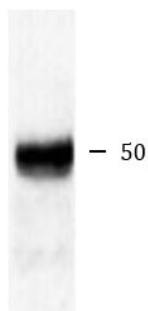
Database links

Images



ARG20520 anti-CaMKII phospho (Thr286) antibody [22B1] IHC-P image

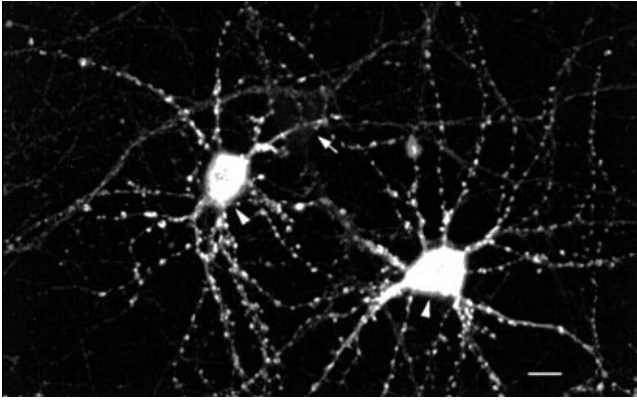
Immunohistochemistry: Bouin's fixed paraffin-embedded backskin sections of transgenic mice- muscle, and hair follicle stained with ARG20520 anti-CaMKII phospho (Thr286) antibody [22B1].



Rat brain

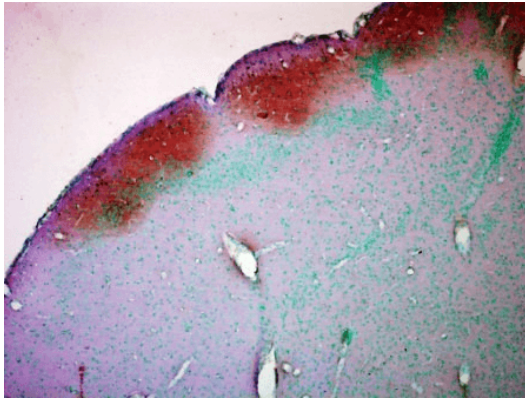
ARG20520 anti-CaMKII phospho (Thr286) antibody [22B1] WB image

Western blot: Rat brain lysate stained with ARG20520 anti-CaMKII phospho (Thr286) antibody [22B1].



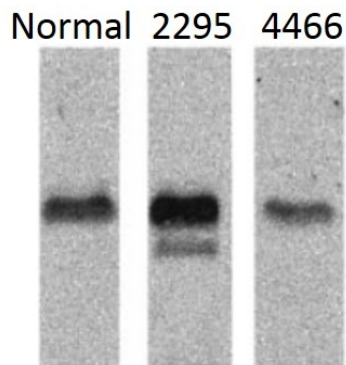
ARG20520 anti-CaMKII phospho (Thr286) antibody [22B1] ICC/IF image

Immunofluorescence: Rat hippocampal neurons stained with ARG20520 anti-CaMKII phospho (Thr286) antibody [22B1].



ARG20520 anti-CaMKII phospho (Thr286) antibody [22B1] IHC image

Immunohistochemistry: Formalin-fixed Human colon carcinoma stained with ARG20520 anti-CaMKII phospho (Thr286) antibody [22B1] at 1:5000 for 12 hours at 4°C. Secondary antibody: Biotin Goat anti-Mouse at 1:2000 for 1 hour at RT. Counterstain: Mayer Hematoxylin (purple/blue) nuclear stain at 200 µl for 2 min at RT. Magnification: 40x.



ARG20520 anti-CaMKII phospho (Thr286) antibody [22B1] WB image

Western blot: 1) Ventricles lysate from 14-Day-Old normal Mouse, 2) Ventricles lysate from 14-Day-Old CaM overexpressing transgenic Mouse line 2295, 3) Ventricles lysate from 14-Day-Old CaM-8 (mutant CaM) expressing transgenic Mouse line 4466, stained with ARG20520 anti-CaMKII phospho (Thr286) antibody [22B1]. (PMID: 10935538).