

ARG20712 Rat IgG2b Isotype Control antibody [KLH/G2b-1-2]

Package: 100 µg
Store at: -20°C

Summary

Product Description	Rat Monoclonal antibody [KLH/G2b-1-2] as a negative control antibody for Rat IgG2b
Tested Application	ELISA, FACS, FLISA, IHC-Fr, IHC-P
Specificity	KLH
Host	Rat
Clonality	Monoclonal
Clone	KLH/G2b-1-2
Isotype	IgG2b, kappa
Target Name	Rat IgG2b
Conjugation	Un-conjugated

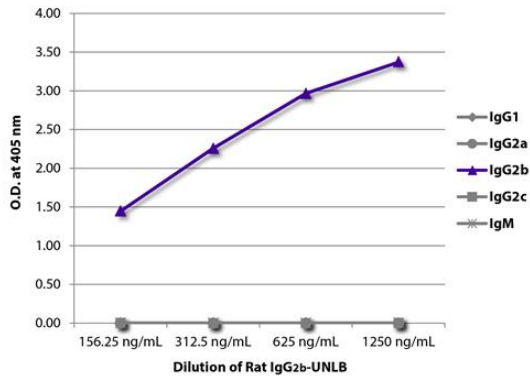
Application Instructions

Application table	Application	Dilution
	ELISA	< 1 µg/ml
	FACS	< 1 µg/10 ⁶ cells
	FLISA	Assay-dependent
	IHC-Fr	Assay-dependent
	IHC-P	Assay-dependent

Application Note * The dilutions indicate recommended starting dilutions and the optimal dilutions or concentrations should be determined by the scientist.

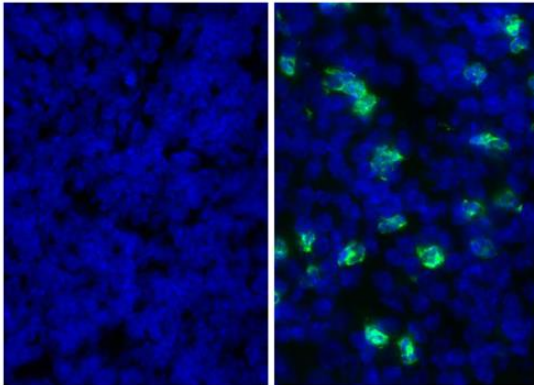
Properties

Form	Liquid
Purification	Purified
Buffer	BBS (pH 8.2)
Concentration	0.5 mg/ml
Storage instruction	For continuous use, store undiluted antibody at 2-8°C for up to a week. For long-term storage, aliquot and store at -20°C or below. Storage in frost free freezers is not recommended. Avoid repeated freeze/thaw cycles. Suggest spin the vial prior to opening. The antibody solution should be gently mixed before use.
Note	For laboratory research only, not for drug, diagnostic or other use.



ARG20712 Rat IgG2b Isotype Control antibody [KLH/G2b-1-2] ELISA image

ELISA: The plate was coated with serially diluted ARG20712 Rat IgG2b Isotype Control antibody [KLH/G2b-1-2]. Immunoglobulin was detected with [ARG21696](#) Mouse anti-Rat IgG1 antibody [G17E7] (HRP), [ARG21702](#) Mouse anti-Rat IgG2a antibody [2A8F4] (HRP), [ARG21708](#) Mouse anti-Rat IgG2b antibody [2B10A8] (HRP), [ARG21714](#) Mouse anti-Rat IgG2c antibody [2C8F1] (HRP), and [ARG23836](#) Mouse anti-Rat IgM antibody [M2A1] (HRP) and quantified.



ARG20712 Rat IgG2b Isotype Control antibody [KLH/G2b-1-2] control image

Control: Frozen section of Mouse spleen tissue stained with ARG20712 Rat IgG2b Isotype Control antibody [KLH/G2b-1-2] (left) and [ARG22104](#) anti-Ly6G + Ly6C antibody [RB6-8C5] (right), followed by [ARG21706](#) Mouse anti-Rat IgG2b antibody [2B10A8] (FITC) and DAPI.