

ARG20834
anti-CD11a / LFA1 alpha antibody [I21/7] (PE-Cyanine 7)Package: 50 µg
Store at: 4°C

Summary

Product Description	PE-Cyanine 7-conjugated Rat Monoclonal antibody [I21/7] recognizes CD11a / LFA1 alpha
Tested Reactivity	Ms
Tested Application	BL, FACS, ICC/IF, IHC-Fr
Specificity	Mouse CD11a. The clone I21/7 reacts with the α subunit of mouse CD11a, also known as LFA-1, and a member of the integrin family of cell adhesion molecules. The antigen is expressed on thymocytes, T and B lymphocytes, and on non-lymphoid cells in the bone marrow.
Host	Rat
Clonality	Monoclonal
Clone	I21/7
Isotype	IgG2a, kappa
Target Name	CD11a / LFA1 alpha
Species	Mouse
Immunogen	Whole BW5147 cells
Conjugation	PE-Cyanine 7
Alternate Names	Leukocyte adhesion glycoprotein LFA-1 alpha chain; LFA1A; LFA-1A; Integrin alpha-L; CD11A; Leukocyte function-associated molecule 1 alpha chain; LFA-1; CD11 antigen-like family member A; CD antigen CD11a

Application Instructions

Application table	Application	Dilution
	BL	Assay-dependent
	FACS	< 0.2 µg/10 ⁶ cells
	ICC/IF	Assay-dependent
	IHC-Fr	Assay-dependent
Application Note	* The dilutions indicate recommended starting dilutions and the optimal dilutions or concentrations should be determined by the scientist.	

Properties

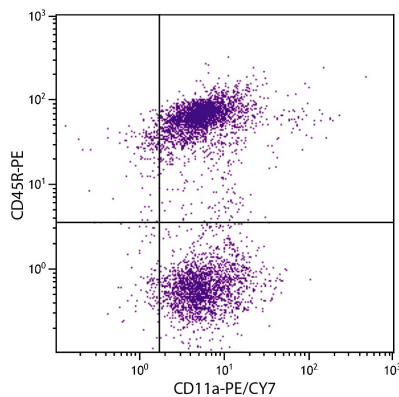
Form	Liquid
Buffer	PBS, 0.1% Sodium azide and Sucrose.
Preservative	0.1% Sodium azide
Stabilizer	Sucrose

Concentration	0.1 mg/ml
Storage instruction	Aliquot and store in the dark at 2-8°C. Keep protected from prolonged exposure to light. Avoid repeated freeze/thaw cycles. Suggest spin the vial prior to opening. The antibody solution should be gently mixed before use.
Note	For laboratory research only, not for drug, diagnostic or other use.

Bioinformation

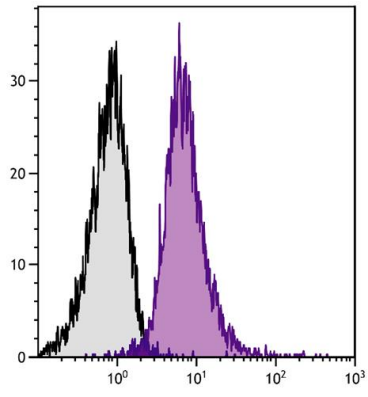
Database links	GeneID: 16408 Mouse
Gene Symbol	ITGAL
Gene Full Name	integrin, alpha L (antigen CD11A (p180), lymphocyte function-associated antigen 1; alpha polypeptide)
Background	ITGAL encodes the integrin alpha L chain. Integrins are heterodimeric integral membrane proteins composed of an alpha chain and a beta chain. This I-domain containing alpha integrin combines with the beta 2 chain (ITGB2) to form the integrin lymphocyte function-associated antigen-1 (LFA-1), which is expressed on all leukocytes. LFA-1 plays a central role in leukocyte intercellular adhesion through interactions with its ligands, ICAMs 1-3 (intercellular adhesion molecules 1 through 3), and also functions in lymphocyte costimulatory signaling. Two transcript variants encoding different isoforms have been found for this gene. [provided by RefSeq, Jul 2008]
Function	Integrin alpha-L/beta-2 is a receptor for ICAM1, ICAM2, ICAM3 and ICAM4. It is involved in a variety of immune phenomena including leukocyte-endothelial cell interaction, cytotoxic T-cell mediated killing, and antibody dependent killing by granulocytes and monocytes. [UniProt]
Calculated Mw	129 kDa
PTM	In resting T-cells, up to 40% of surface ITGAL is constitutively phosphorylated. Phosphorylation causes conformational changes needed for ligand binding and is necessary for activation by some physiological agents.

Images



ARG20834 anti-CD11a / LFA1 alpha antibody [I21/7] (PE-Cyanine 7)
FACS image

Flow Cytometry: BALB/c Mouse splenocytes stained with ARG20834 anti-CD11a / LFA1 alpha antibody [I21/7] (PE-Cyanine 7) and anti-CD45R antibody [RA3-6B2] (PE).



ARG20834 anti-CD11a / LFA1 alpha antibody [I21/7] (PE-Cyanine 7)
FACS image

Flow Cytometry: BALB/c Mouse splenocytes stained with ARG20834
anti-CD11a / LFA1 alpha antibody [I21/7] (PE-Cyanine 7).