

ARG20847
anti-CD18 / LFA1 beta antibody [C71/16] (Biotin)Package: 100 µg
Store at: 4°C

Summary

Product Description	Biotin-conjugated Rat Monoclonal antibody [C71/16] recognizes CD18 / LFA1 beta
Tested Reactivity	Ms
Tested Application	ELISA, FACS, ICC/IF, IHC-Fr, IHC-P, WB
Specificity	Mouse CD18. The clone C71/16 has not been reported to inhibit cell adhesion.
Host	Rat
Clonality	Monoclonal
Clone	C71/16
Isotype	IgG2a, kappa
Target Name	CD18 / LFA1 beta
Species	Mouse
Immunogen	Cell membrane glycoproteins derived from mouse BW5147 T cell lymphoma cells
Conjugation	Biotin
Alternate Names	MF17; LAD; CD antigen CD18; MF17; MAC-1; Cell surface adhesion glycoproteins LFA-1/CR3/p150,95 subunit beta; LCAMB; Integrin beta-2; Complement receptor C3 subunit beta; LFA-1; CD18

Application Instructions

Application table	Application	Dilution
	ELISA	Assay-dependent
	FACS	< 1 µg/10 ⁶ cells
	ICC/IF	Assay-dependent
	IHC-Fr	Assay-dependent
	IHC-P	Assay-dependent
	WB	Assay-dependent

Application Note * The dilutions indicate recommended starting dilutions and the optimal dilutions or concentrations should be determined by the scientist.

Properties

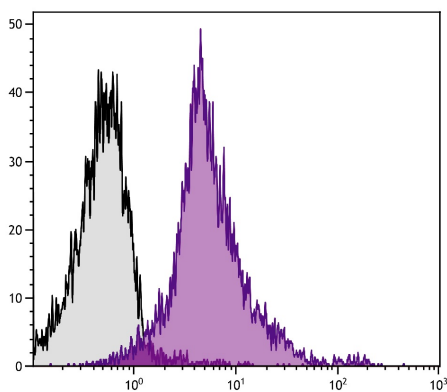
Form	Liquid
Buffer	PBS and 0.1% Sodium azide.
Preservative	0.1% Sodium azide
Concentration	0.5 mg/ml

Storage instruction	Aliquot and store in the dark at 2-8°C. Keep protected from prolonged exposure to light. Avoid repeated freeze/thaw cycles. Suggest spin the vial prior to opening. The antibody solution should be gently mixed before use.
Note	For laboratory research only, not for drug, diagnostic or other use.

Bioinformation

Database links	GeneID: 16414 Mouse Swiss-port # P11835 Mouse
Gene Symbol	ITGB2
Gene Full Name	integrin beta 2
Background	This gene encodes an integrin beta chain, which combines with multiple different alpha chains to form different integrin heterodimers. Integrins are integral cell-surface proteins that participate in cell adhesion as well as cell-surface mediated signalling. The encoded protein plays an important role in immune response and defects in this gene cause leukocyte adhesion deficiency. Alternative splicing results in multiple transcript variants. [provided by RefSeq, Dec 2014]
Function	Integrin alpha-L/beta-2 is a receptor for ICAM1, ICAM2, ICAM3 and ICAM4. Integrins alpha-M/beta-2 and alpha-X/beta-2 are receptors for the iC3b fragment of the third complement component and for fibrinogen. Integrin alpha-X/beta-2 recognizes the sequence G-P-R in fibrinogen alpha-chain. Integrin alpha-M/beta-2 recognizes P1 and P2 peptides of fibrinogen gamma chain. Integrin alpha-M/beta-2 is also a receptor for factor X. Integrin alpha-D/beta-2 is a receptor for ICAM3 and VCAM1. Triggers neutrophil transmigration during lung injury through PTK2B/PYK2-mediated activation. [UniProt]
Calculated Mw	85 kDa
PTM	Both Ser-745 and Ser-756 become phosphorylated when T-cells are exposed to phorbol esters (PubMed:11700305). Phosphorylation on Thr-758 (but not on Ser-756) allows interaction with 14-3-3 proteins (PubMed:11700305, PubMed:16301335).

Images



ARG20847 anti-CD18 / LFA1 beta antibody [C71/16] (Biotin) FACS image

Flow Cytometry: BALB/c Mouse splenocytes stained with ARG20847 anti-CD18 / LFA1 beta antibody [C71/16] (Biotin).