

## ARG20867 anti-CD22 antibody [2D6]

Package: 100 µg  
Store at: -20°C

### Summary

|                     |  |
|---------------------|--|
| Product Description | Rat Monoclonal antibody [2D6] recognizes CD22  |
| Tested Reactivity   | Ms   |
| Tested Application  | Cell-Act , FACS, ICC/IF, IHC-Fr, IHC-P, IP   |
| Specificity         | Mouse CD22.  |
| Host                | Rat  |
| Clonality           | Monoclonal   |
| Clone               | 2D6  |
| Isotype             | IgG1, kappa  |
| Target Name         | CD22   |
| Species             | Mouse  |
| Immunogen           | Splenic lymphocyte plasma membranes from CBA x C57 F1 mice   |
| Conjugation         | Un-conjugated  |
| Alternate Names     | B-lymphocyte cell adhesion molecule; B-cell receptor CD22; T-cell surface antigen Leu-14; BL-CAM; SIGLEC-2; Sialic acid-binding Ig-like lectin 2; Siglec-2; CD antigen CD22; SIGLEC2 |

### Application Instructions

| Application table | Application | Dilution        |
|-------------------|-------------|-----------------|
|                   | Cell-Act    | Assay-dependent |
|                   | FACS        | Assay-dependent |
|                   | ICC/IF      | Assay-dependent |
|                   | IHC-Fr      | Assay-dependent |
|                   | IHC-P       | Assay-dependent |
|                   | IP          | Assay-dependent |

**Application Note** \* The dilutions indicate recommended starting dilutions and the optimal dilutions or concentrations should be determined by the scientist.

### Properties

|                     |  |
|---------------------|--|
| Form                | Liquid   |
| Buffer              | BBS (pH 8.2)   |
| Concentration       | 0.5 mg/ml  |
| Storage instruction | For continuous use, store undiluted antibody at 2-8°C for up to a week. For long-term storage, aliquot and store at -20°C. Storage in frost free freezers is not recommended. Avoid repeated freeze/thaw |

cycles. Suggest spin the vial prior to opening. The antibody solution should be gently mixed before use.

#### Note

For laboratory research only, not for drug, diagnostic or other use.

## Bioinformation

---

#### Database links

[GeneID: 12483 Mouse](#)

[Swiss-port # P35329 Mouse](#)

#### Gene Symbol

CD22

#### Gene Full Name

CD22 antigen

#### Function

Mediates B-cell B-cell interactions. May be involved in the localization of B-cells in lymphoid tissues. Binds sialylated glycoproteins; one of which is CD45. Preferentially binds to alpha-2,6-linked sialic acid. The sialic acid recognition site can be masked by cis interactions with sialic acids on the same cell surface. Upon ligand induced tyrosine phosphorylation in the immune response seems to be involved in regulation of B-cell antigen receptor signaling. Plays a role in positive regulation through interaction with Src family tyrosine kinases and may also act as an inhibitory receptor by recruiting cytoplasmic phosphatases via their SH2 domains that block signal transduction through dephosphorylation of signaling molecules. [UniProt]

#### Research Area

Cancer antibody; Developmental Biology antibody; Immune System antibody; Immature B Cell Marker antibody

#### Calculated Mw

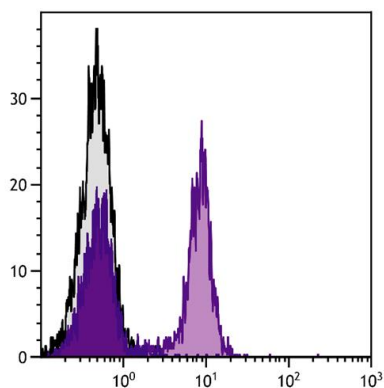
95 kDa

#### PTM

Phosphorylation of Tyr-762, Tyr-807 and Tyr-822 are involved in binding to SYK, GRB2 and SYK, respectively. Phosphorylation of Tyr-842 is involved in binding to SYK, PLCG2 and PIK3R1/PIK3R2. Phosphorylated on tyrosine residues by LYN.

## Images

---



ARG20867 anti-CD22 antibody [2D6] FACS image

Flow Cytometry: BALB/c Mouse splenocytes stained with ARG20867 anti-CD22 antibody [2D6] followed by [ARG21697](#) Mouse anti-Rat IgG1 antibody [G17E7] (Biotin) and Streptavidin (FITC).