

ARG20870 anti-CD22 antibody [2D6] (PE)

Package: 50 µg
Store at: 4°C

Summary

Product Description	PE-conjugated Rat Monoclonal antibody [2D6] recognizes CD22
Tested Reactivity	Ms
Tested Application	Cell-Act , FACS, ICC/IF, IHC-Fr, IHC-P
Specificity	Mouse CD22.
Host	Rat
Clonality	Monoclonal
Clone	2D6
Isotype	IgG1, kappa
Target Name	CD22
Species	Mouse
Immunogen	Splenic lymphocyte plasma membranes from CBA x C57 F1 mice
Conjugation	PE
Alternate Names	B-lymphocyte cell adhesion molecule; B-cell receptor CD22; T-cell surface antigen Leu-14; BL-CAM; SIGLEC-2; Sialic acid-binding Ig-like lectin 2; Siglec-2; CD antigen CD22; SIGLEC2

Application Instructions

Application table	Application	Dilution
	Cell-Act	Assay-dependent
	FACS	< 0.2 µg/10 ⁶ cells
	ICC/IF	Assay-dependent
	IHC-Fr	Assay-dependent
	IHC-P	Assay-dependent
Application Note	* The dilutions indicate recommended starting dilutions and the optimal dilutions or concentrations should be determined by the scientist.	

Properties

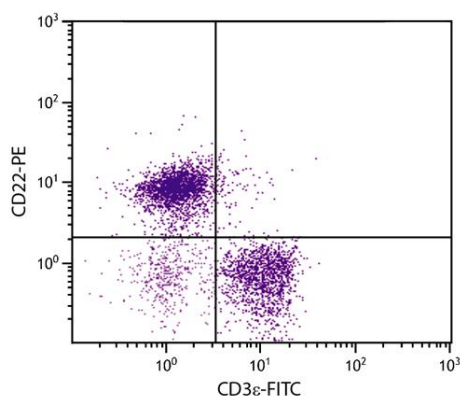
Form	Liquid
Buffer	PBS, 0.1% Sodium azide and Sucrose.
Preservative	0.1% Sodium azide
Stabilizer	Sucrose
Concentration	0.1 mg/ml

Storage instruction	Aliquot and store in the dark at 2-8°C. Keep protected from prolonged exposure to light. Avoid repeated freeze/thaw cycles. Suggest spin the vial prior to opening. The antibody solution should be gently mixed before use.
Note	For laboratory research only, not for drug, diagnostic or other use.

Bioinformation

Database links	GeneID: 12483 Mouse Swiss-port # P35329 Mouse
Gene Symbol	CD22
Gene Full Name	CD22 antigen
Function	Mediates B-cell B-cell interactions. May be involved in the localization of B-cells in lymphoid tissues. Binds sialylated glycoproteins; one of which is CD45. Preferentially binds to alpha-2,6-linked sialic acid. The sialic acid recognition site can be masked by cis interactions with sialic acids on the same cell surface. Upon ligand induced tyrosine phosphorylation in the immune response seems to be involved in regulation of B-cell antigen receptor signaling. Plays a role in positive regulation through interaction with Src family tyrosine kinases and may also act as an inhibitory receptor by recruiting cytoplasmic phosphatases via their SH2 domains that block signal transduction through dephosphorylation of signaling molecules. [UniProt]
Research Area	Cancer antibody; Developmental Biology antibody; Immune System antibody; Immature B Cell Marker antibody
Calculated Mw	95 kDa
PTM	Phosphorylation of Tyr-762, Tyr-807 and Tyr-822 are involved in binding to SYK, GRB2 and SYK, respectively. Phosphorylation of Tyr-842 is involved in binding to SYK, PLCG2 and PIK3R1/PIK3R2. Phosphorylated on tyrosine residues by LYN.

Images



ARG20870 anti-CD22 antibody [2D6] (PE) FACS image

Flow Cytometry: BALB/c Mouse splenocytes stained with ARG20870 anti-CD22 antibody [2D6] (PE) and [ARG20817](#) anti-CD3ε antibody [C363.29B] (FITC).