

ARG20962 anti-CD106 / VCAM1 antibody [1.G11B1]

Package: 100 µg
Store at: -20°C

Summary

Product Description	Mouse Monoclonal antibody [1.G11B1] recognizes CD106 / VCAM1
Tested Reactivity	Hu, Pig
Tested Application	BL, ELISA, FACS, ICC/IF, IHC-Fr, IP, WB
Specificity	Human/Porcine CD106. The clone 1.G11B1 inhibits in vitro binding of lymphocytes and monocytes to VCAM-1 on stimulated endothelium.
Host	Mouse
Clonality	Monoclonal
Clone	1.G11B1
Isotype	IgG1, kappa
Target Name	CD106 / VCAM1
Species	Human
Conjugation	Un-conjugated
Alternate Names	CD106; INCAM-100; Vascular cell adhesion protein 1; VCAM-1; CD antigen CD106; V-CAM 1

Application Instructions

Application table	Application	Dilution
	BL	Assay-dependent
	ELISA	Assay-dependent
	FACS	< 1 µg/10 ⁶ cells
	ICC/IF	Assay-dependent
	IHC-Fr	Assay-dependent
	IP	Assay-dependent
	WB	Assay-dependent

Application Note WB: Under non-reducing condition.
* The dilutions indicate recommended starting dilutions and the optimal dilutions or concentrations should be determined by the scientist.

Properties

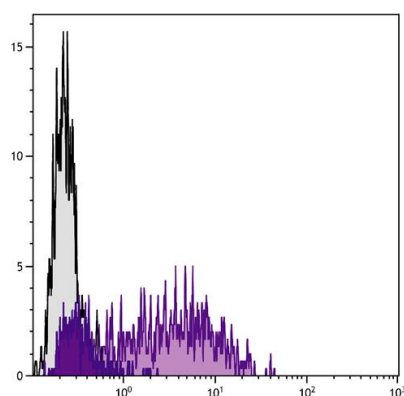
Form	Liquid
Buffer	BBS (pH 8.2)
Concentration	0.1 mg/ml

Storage instruction	For continuous use, store undiluted antibody at 2-8°C for up to a week. For long-term storage, aliquot and store at -20°C. Storage in frost free freezers is not recommended. Avoid repeated freeze/thaw cycles. Suggest spin the vial prior to opening. The antibody solution should be gently mixed before use.
Note	For laboratory research only, not for drug, diagnostic or other use.

Bioinformation

Database links	GeneID: 7412 Human Swiss-port # P19320 Human
Gene Symbol	VCAM1
Gene Full Name	vascular cell adhesion molecule 1
Background	This gene is a member of the Ig superfamily and encodes a cell surface sialoglycoprotein expressed by cytokine-activated endothelium. This type I membrane protein mediates leukocyte-endothelial cell adhesion and signal transduction, and may play a role in the development of arteriosclerosis and rheumatoid arthritis. Three alternatively spliced transcripts encoding different isoforms have been described for this gene. [provided by RefSeq, Dec 2010]
Function	Important in cell-cell recognition. Appears to function in leukocyte-endothelial cell adhesion. Interacts with integrin alpha-4/beta-1 (ITGA4/ITGB1) on leukocytes, and mediates both adhesion and signal transduction. The VCAM1/ITGA4/ITGB1 interaction may play a pathophysiologic role both in immune responses and in leukocyte emigration to sites of inflammation. [UniProt]
Calculated Mw	81 kDa
PTM	Sialoglycoprotein.

Images



ARG20962 anti-CD106 / VCAM1 antibody [1.G11B1] FACS image

Flow Cytometry: TNF α stimulated Human endothelial cell line HUV-EC-C was stained with ARG20962 anti-CD106 / VCAM1 antibody [1.G11B1] followed by [ARG21884](#) Goat anti-Mouse IgG1 antibody (FITC) (pre-adsorbed).