

ARG20963
anti-CD106 / VCAM1 antibody [1.G11B1] (FITC)

Package: 50 tests

Store at: 4°C

Summary

Product Description	FITC-conjugated Mouse Monoclonal antibody [1.G11B1] recognizes CD106 / VCAM1
Tested Reactivity	Hu, Pig
Tested Application	BL, FACS, ICC/IF, IHC-Fr, WB
Specificity	Human/Porcine CD106. The clone 1.G11B1 inhibits in vitro binding of lymphocytes and monocytes to VCAM-1 on stimulated endothelium.
Host	Mouse
Clonality	Monoclonal
Clone	1.G11B1
Isotype	IgG1, kappa
Target Name	CD106 / VCAM1
Species	Human
Conjugation	FITC
Alternate Names	CD106; INCAM-100; Vascular cell adhesion protein 1; VCAM-1; CD antigen CD106; V-CAM 1

Application Instructions

Application table	Application	Dilution
	BL	Assay-dependent
	FACS	10 µl/10 ⁶ cells
	ICC/IF	Assay-dependent
	IHC-Fr	Assay-dependent
	WB	Assay-dependent
Application Note	WB: Under non-reducing condition. * The dilutions indicate recommended starting dilutions and the optimal dilutions or concentrations should be determined by the scientist.	

Properties

Form	Liquid
Buffer	PBS and 0.1% Sodium azide.
Preservative	0.1% Sodium azide
Storage instruction	Aliquot and store in the dark at 2-8°C. Keep protected from prolonged exposure to light. Avoid repeated freeze/thaw cycles. Suggest spin the vial prior to opening. The antibody solution should be gently mixed before use.

Bioinformation

Database links[GeneID: 7412 Human](#)[Swiss-port # P19320 Human](#)**Gene Symbol**

VCAM1

Gene Full Name

vascular cell adhesion molecule 1

Background

This gene is a member of the Ig superfamily and encodes a cell surface sialoglycoprotein expressed by cytokine-activated endothelium. This type I membrane protein mediates leukocyte-endothelial cell adhesion and signal transduction, and may play a role in the development of atherosclerosis and rheumatoid arthritis. Three alternatively spliced transcripts encoding different isoforms have been described for this gene. [provided by RefSeq, Dec 2010]

Function

Important in cell-cell recognition. Appears to function in leukocyte-endothelial cell adhesion. Interacts with integrin alpha-4/beta-1 (ITGA4/ITGB1) on leukocytes, and mediates both adhesion and signal transduction. The VCAM1/ITGA4/ITGB1 interaction may play a pathophysiologic role both in immune responses and in leukocyte emigration to sites of inflammation. [UniProt]

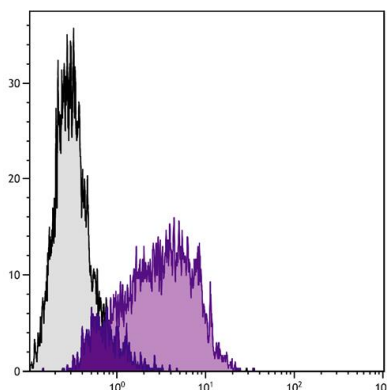
Calculated Mw

81 kDa

PTM

Sialoglycoprotein.

Images



ARG20963 anti-CD106 / VCAM1 antibody [1.G11B1] (FITC) FACS image

Flow Cytometry: TNF α stimulated Human endothelial cell line HUVEC-C was stained with ARG20963 anti-CD106 / VCAM1 antibody [1.G11B1] (FITC).